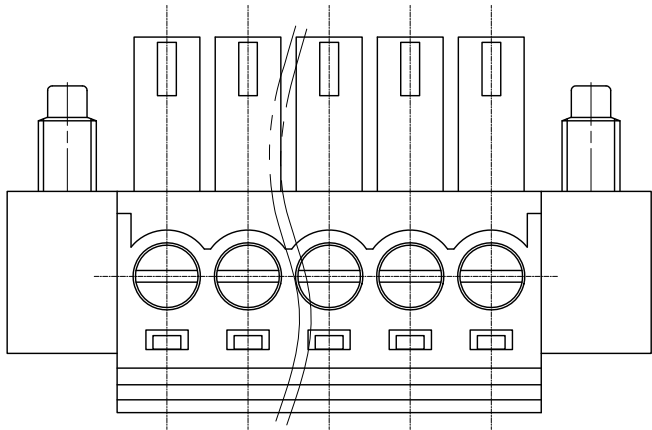


1  
RoHS Compliance

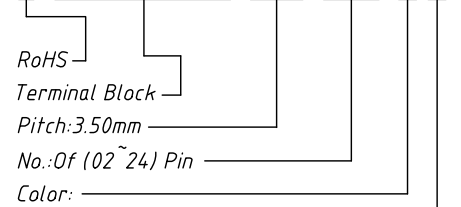
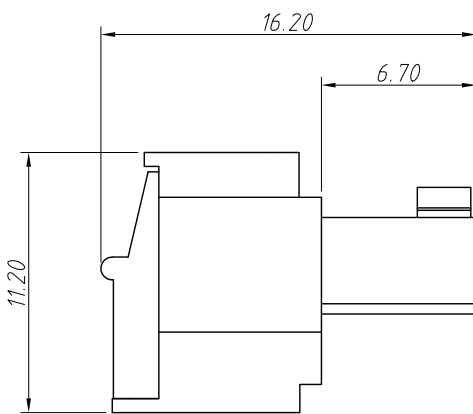
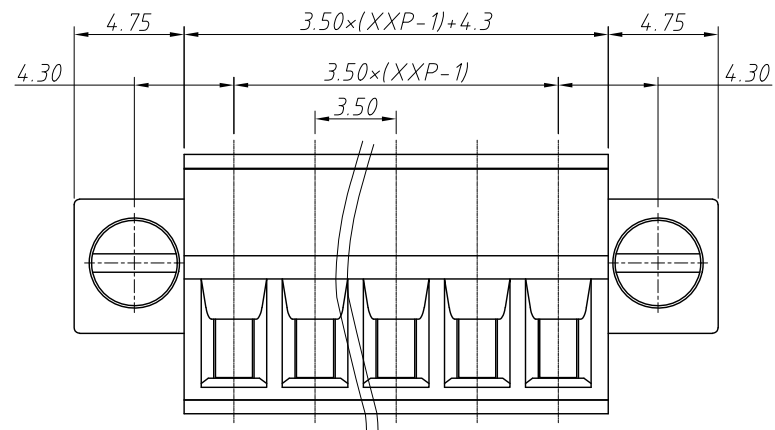
6	7	8
REV	SYM	Revision Record
V0	KLS02006	New Version Release
		Appr.
		WuHao
		Date
		2024-10-29



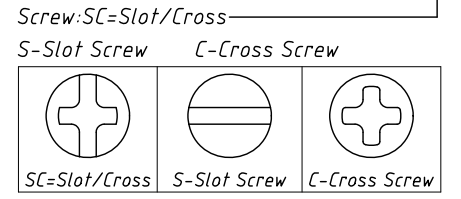
Electrical Characteristics	UL	IEC
Rated Voltage	300V	160V
Rated Current	8A	7A
Withstand Voltage	1600V/1 min	2.5 KV
Wire Range	28~16 AWG	0.5~1.5mm <sup>2</sup>

Material and other:  
Housing:PA66, UL 94V-0  
Pin Header:Copper Alloy,Ni Plated  
Screws/Torque:M2.0/0.2Nm  
Operating temperature:-40°C ~ +105°C  
Steip Length:6~7mm

Order Information  
L-KLS2-EDCKM-3.50-XXP-X X



- Color:
- 1=Gray      2=Blue      3=Black
  - 4=Green      5=Orange      6=Red
  - 7=Transp      8=Yellow      9=White

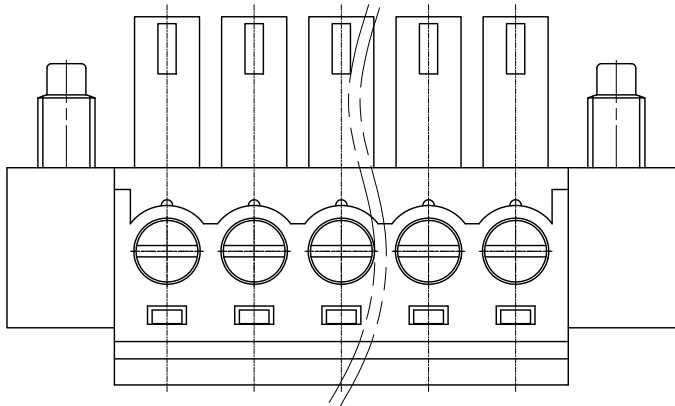


ANGLE TOLERANCE	PROJECTION	Description:
±3°		Pitch 3.50mm Terminal Block
GENERAL TOLERANCE	UNITS	KLS P/N:
0~30 ±0.50	mm	L-KLS2-EDCKM-3.50-XXP-XX
30~60 ±0.75	SHEET SIZE	A4
60~90 ±1.00	Draw:	WuHao 2024-10-29
	Check:	Daniel 2024-10-29



1  
RoHS Compliance

6	7	8
REV	SYM	Revision Record
V0	KLS02006	New Version Release
	Appr.	Date
	WuHao	2024-10-29

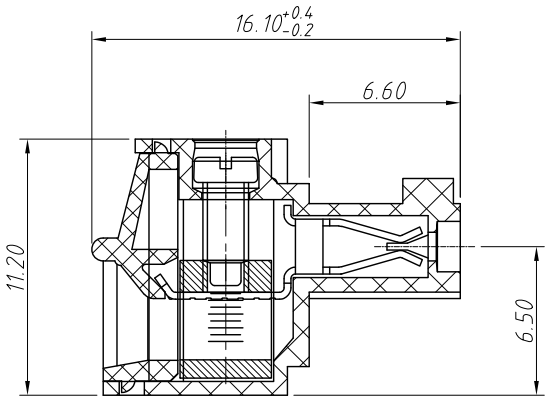


Electrical Characteristics	UL	IEC
Rated Voltage	300V	160V
Rated Current	8A	7A
Withstand Voltage	1600V/1 min	2.5 KV
Wire Range	28~16 AWG	0.5~1.5mm <sup>2</sup>

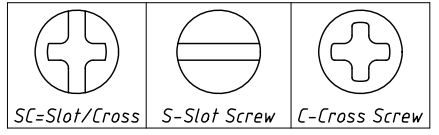
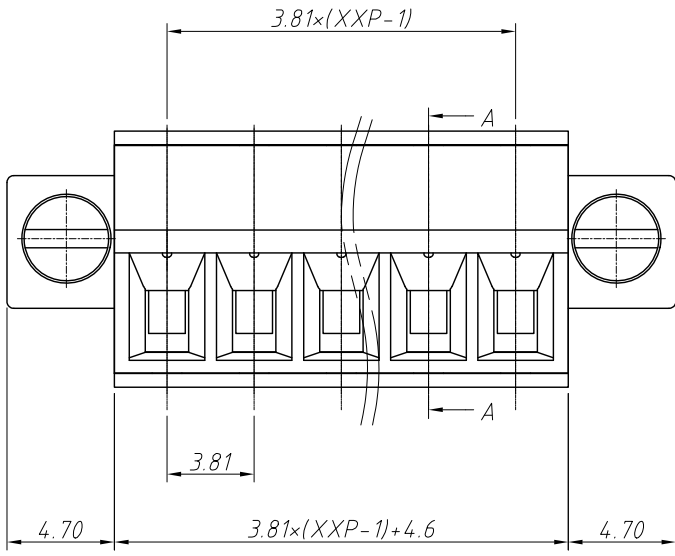
Material and other:  
 Housing:PA66, UL 94V-0  
 Pin Header:Copper Alloy,Ni Plated  
 Screws/Torque:M2.0/0.2Nm  
 Operating temperature:-40°C ~ +105°C  
 Steip Length:6~7mm

Order Information  
 L-KLS2-EDCKM-3.81-XXP-XX

RoHS  
 Terminal Block  
 Pitch:3.81mm  
 No.:Of (02~24) Pin  
 Color:  
 1=Gray    2=Blue    3=Black  
 4=Green    5=Orange    6=Red  
 7=Transp    8=Yellow    9=White  
 Screw:SC=Slot/Cross  
 S-Slot Screw    C-Cross Screw



Section: A-A



ANGLE TOLERANCE	PROJECTION	Description:
±3°		Pitch 3.81mm Terminal Block
GENERAL TOLERANCE	UNITS	KLS P/N:
0~30 ±0.50	mm	L-KLS2-EDCKM-3.81-XXP-XX
30~60 ±0.75	SHEET SIZE	
60~90 ±1.00	A4	
	Draw:	WuHao 2024-10-29
	Check:	Daniel 2024-10-29

