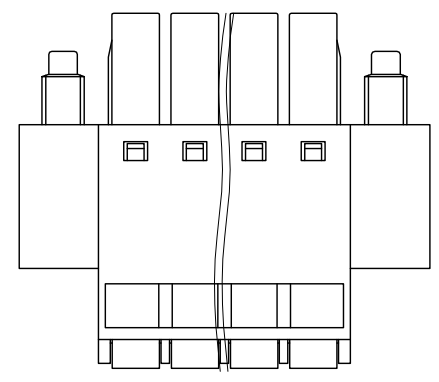
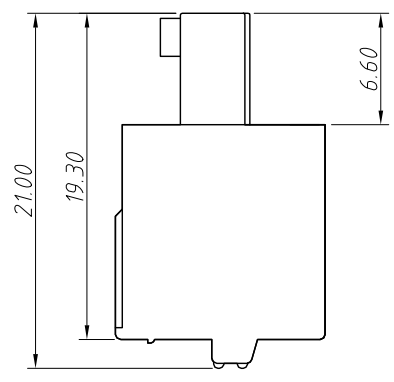
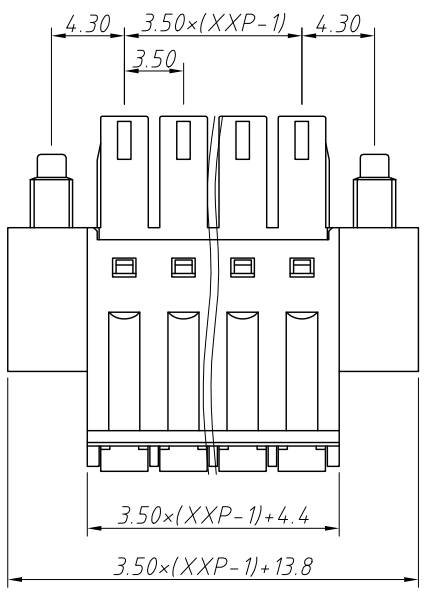


1
RoHS Compliance

6	7	8
REV	SYM	Revision Record
V0	KLS02006	New Version Release
		Appr.
		WuHao
		Date
		2024-10-31

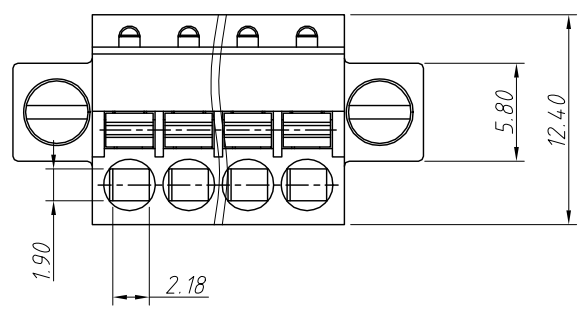


Electrical Characteristics	UL	IEC
Rated Voltage	300V	160V
Rated Current	8A	8A
Withstand Voltage	1600V/1 min	2.5 KV
Wire Range	28~16 AWG	0.2~1.5 mm ²

Material and other:
 Housing:PA66, UL94V-0
 Pin Header:Copper Alloy,Sn Plated
 Strip Length:7~8mm
 Operating Temperature:-40°C ~ +105°C

Order Information
 L-KLS2-EDGKDM-3.50-XXP-X

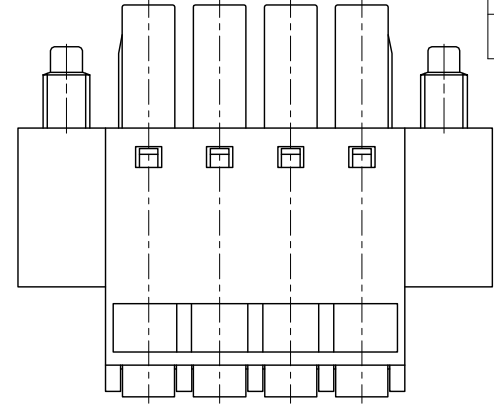
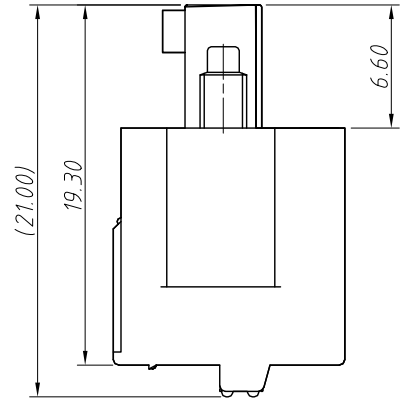
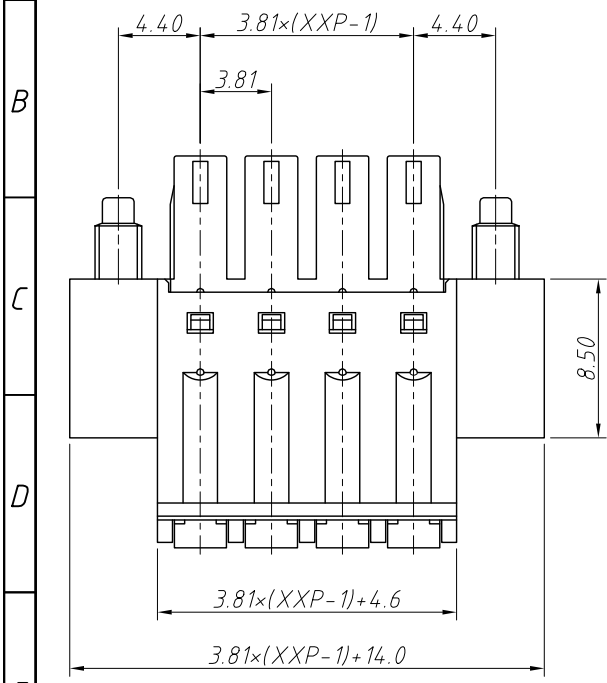
RoHS
 Terminal Block
 Pitch:3.50mm
 No.:Of (02~24) Pin
 Color:
 1=Gray 2=Blue 3=Black
 4=Green 5=Orange 6=Red
 7=Transp 8=Yellow 9=White



ANGLE TOLERANCE	PROJECTION	Description:
±3°		Pitch 3.50mm Terminal Block
GENERAL TOLERANCE	UNITS	mm
0~30 ±0.50	SHEET SIZE	A4
30~60 ±0.75	Draw:	WuHao 2024-10-31
60~90 ±1.00	Check:	Daniel 2024-10-31
		L-KLS2-EDGKDM-3.50-XXP-X
		NingBo KLS ELECTRONIC CO.,L TD.

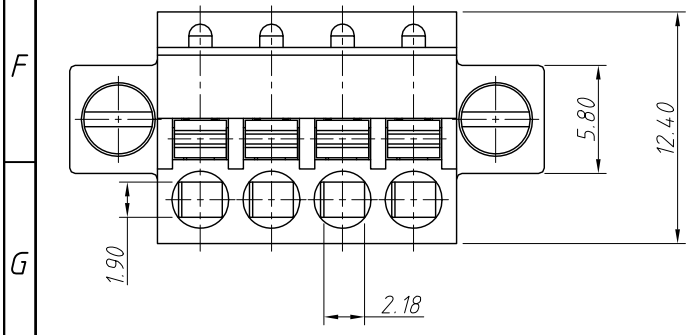
1
RoHS Compliance

6		7		8	
REV	SYM	Revision Record		Appr.	Date
V0	KLS02006	New Version Release		WuHao	2024-10-31



Electrical Characteristics	UL	IEC
Rated Voltage	300V	160V
Rated Current	8A	8A
Withstand Voltage	1600V/1 min	2.5 KV
Wire Range	28~16 AWG	0.2~1.5 mm ²

Material and other:
Housing:PA66, UL94V-0
Pin Header:Copper Alloy,Sn Plated
Strip Length:7~8mm
Operating Temperature:-40°C ~ +105°C



Order Information
L-KLS2-EDGKDM-3.81-XXP-X

RoHS
Terminal Block
Pitch:3.81mm
No.:Of (02~24) Pin
Color:

1=Gray 2=Blue 3=Black
4=Green 5=Orange 6=Red
7=Transp 8=Yellow 9=White

ANGLE TOLERANCE	PROJECTION	Description:			
±3°		Pitch 3.81mm Terminal Block			
GENERAL TOLERANCE	UNITS	mm	KLS P/N:		
0~30 ±0.50	SHEET SIZE	A4	L-KLS2-EDGKDM-3.81-XXP-X		
30~60 ±0.75	Draw:	WuHao	2024-10-31		
60~90 ±1.00	Check:	Daniel	2024-10-31		