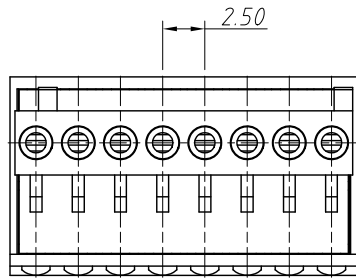
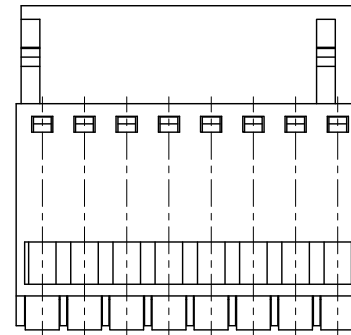
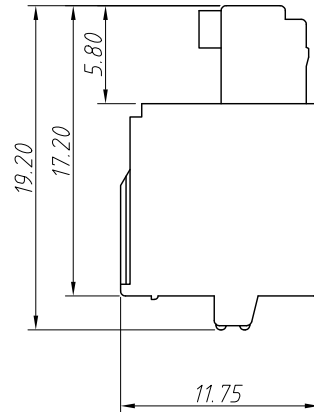
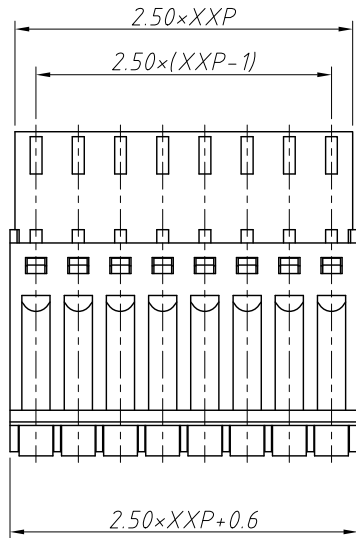


1 RoHS Compliance

REV	SYM	Revision Record	Appr.	Date
V0	KLS02006	New Version Release	WuHao	2024-10-31



Electrical Characteristics	UL	IEC
Rated Voltage	150V	100V
Rated Current	5A	5A
Withstand Voltage	1300V/1 min	1.5 KV
Wire Range	26 ~ 20 AWG	0.2 ~ 0.5 mm ²

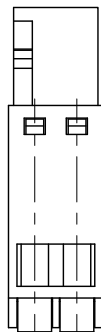
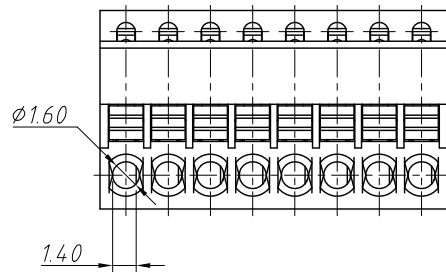


Material and other:
 Housing: PA66, UL94V-0
 Pin Header: Copper Alloy, Ni Plated
 Strip Length: 7 ~ 8mm
 Operating Temperature: -40°C ~ +105°C

Order Information

L-KLS2-EDGKD-2.50-XXP-X

RoHS
 Terminal Block
 Pitch: 2.50mm
 No.: Of (02 ~ 24) Pin
 Color:
 1=Gray 2=Blue 3=Black
 4=Green 5=Orange 6=Red
 7=Transp 8=Yellow 9=White



2P View

ANGLE TOLERANCE	PROJECTION	Description:
±3°		Pitch 2.50mm Terminal Block
GENERAL TOLERANCE	UNITS	mm
0 ~ 30	±0.50	
30 ~ 60	±0.75	
60 ~ 90	±1.00	
SHEET SIZE	A4	
Draw:	WuHao	2024-10-31
Check:	Daniel	2024-10-31
KLS ELECTRONIC		NingBo KLS ELECTRONIC CO.,L TD.