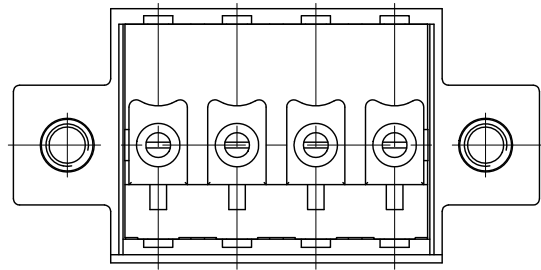


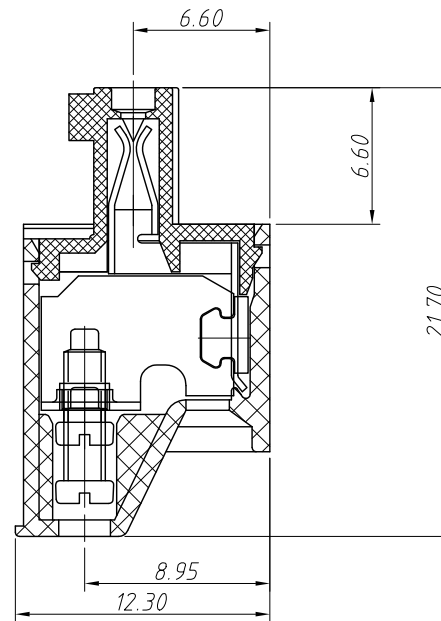
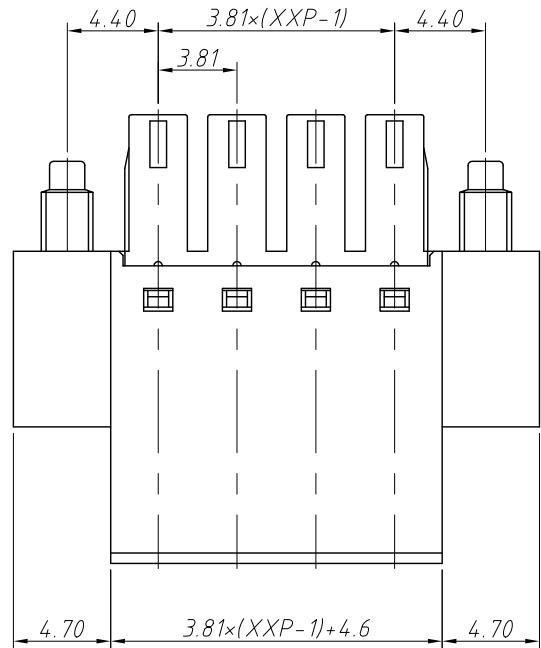
1 RoHS Compliance



Material and other:  
 Housing: PA66, UL 94V-0  
 Clamp: Phosphor Bronze, Ni Plated  
 Cage: Brass, Zn Plated  
 Screw/Torque: Steel, M2, Zn Plated/0.2N.m  
 Slide Block: Steel, Zn Plated  
 Contact resistance: 20mΩ MAX  
 Insulation resistance: 500MΩ/DC500V  
 Stripping Length: 7mm  
 Temp. Range: -40°C ~ +105°C

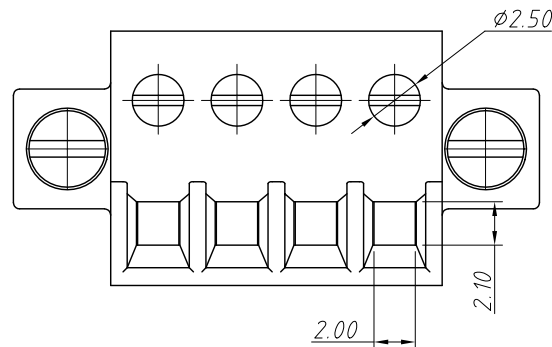
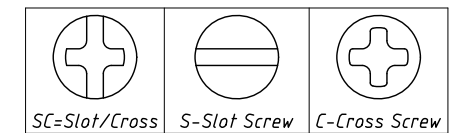
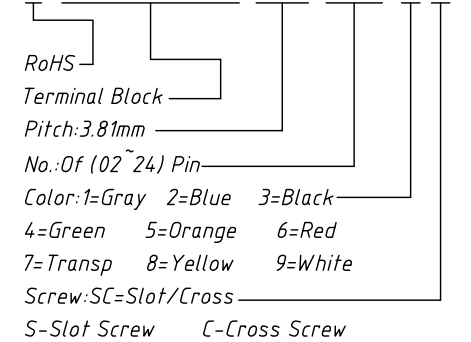
REV	SYM	Revision Record	Appr.	Date
V0	KLS02006	New Version Release	WuHao	2024-11-01

Electrical Characteristics	UL	IEC
Rated Voltage	300V	250V
Rated Current	8A	13.5A
Withstand Voltage	AC2000V/1 min	---
Wire Range	28~16 AWG	1.0mm <sup>2</sup>



Order Information

L-KLS2-EDKCM-3.81-XXP-X X



ANGLE TOLERANCE	PROJECTION	Description:
±3°		Pitch 3.81mm Terminal Block
GENERAL TOLERANCE	UNITS	KLS P/N:
0~30 ±0.50	mm	L-KLS2-EDKCM-3.81-XXP-XX
30~60 ±0.75	SHEET SIZE	A4
60~90 ±1.00	Draw:	WuHao 2024-11-01
	Check:	Daniel 2024-11-01



NingBo KLS ELECTRONIC CO.,L TD.