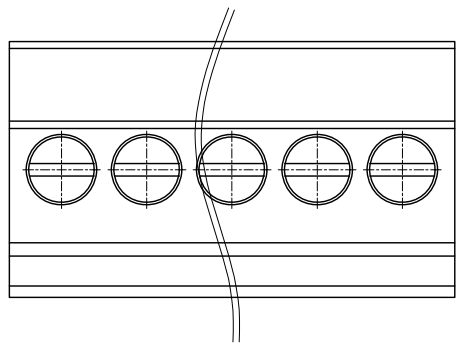


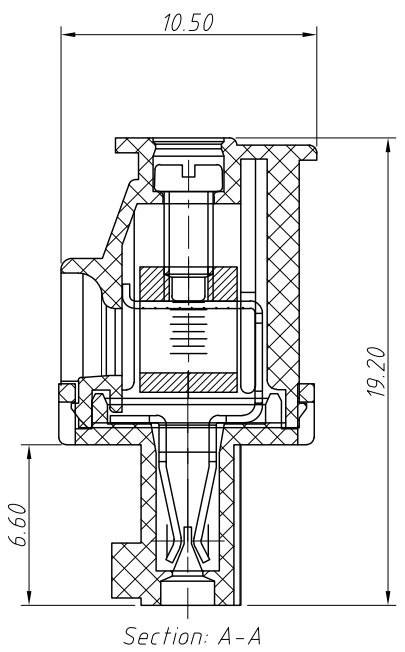
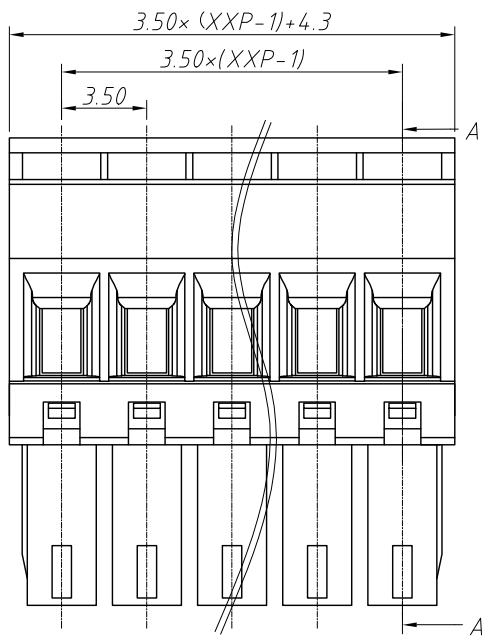
1  
RoHS Compliance

6	7	8
REV	SYM	Revision Record
V0	KLS02006	New Version Release
	Appr.	Date
	WuHao	2024-10-29



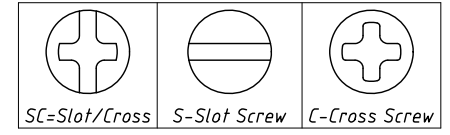
Electrical Characteristics	UL	IEC
Rated Voltage	300V	250V
Rated Current	8A	7A
Withstand Voltage	AC2000V/1 min	---
Wire Range	28~16 AWG	1.5mm <sup>2</sup>

Material and other:  
 Housing:PA66, UL 94V-0  
 Clamp/Cage:Copper Alloy,Ni Plated  
 Screws/Torque:Steel,M2.0,Zn Plated/0.2Nm  
 Temp.Range:-40°C ~ +105°C  
 Steip Length:6~7mm



Order Information  
 L-KLS2-EDCD-3.50-XXP-X X

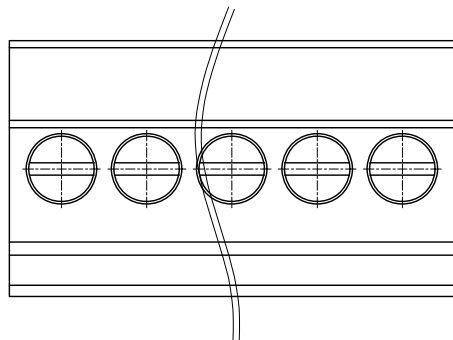
RoHS  
 Terminal Block  
 Pitch:3.50mm  
 No.:Of (02~24) Pin  
 Color:  
 1=Gray    2=Blue    3=Black  
 4=Green    5=Orange    6=Red  
 7=Transp    8=Yellow    9=White  
 Screw:SC=Slot/Cross  
 S-Slot Screw    C-Cross Screw



ANGLE TOLERANCE	PROJECTION	Description:
±3°		Pitch 3.50mm Terminal Block
GENERAL TOLERANCE	UNITS	mm
0~30 ±0.50	SHEET SIZE	A4
30~60 ±0.75	Draw:	WuHao 2024-10-29
60~90 ±1.00	Check:	Daniel 2024-10-29
		L-KLS2-EDCD-3.50-XXP-XX
		NingBo KLS ELECTRONIC CO.,L TD.

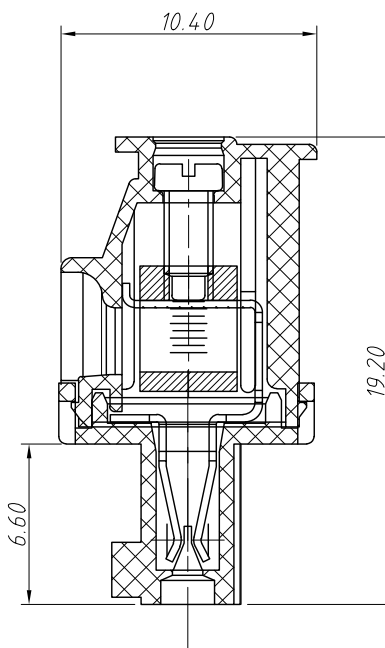
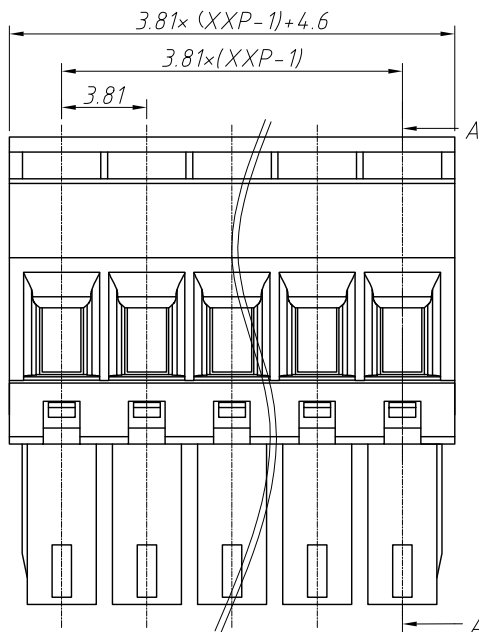
1  
RoHS Compliance

6	7	8
REV	SYM	Revision Record
V0	KLS02006	New Version Release
Appr.	WuHao	Date
		2024-10-29



Electrical Characteristics	UL	IEC
Rated Voltage	300V	250V
Rated Current	8A	7A
Withstand Voltage	AC2000V/1 min	---
Wire Range	28~16 AWG	1.5mm <sup>2</sup>

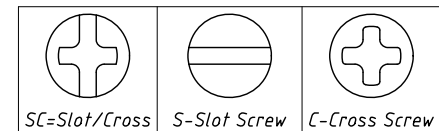
Material and other:  
 Housing:PA66, UL 94V-0  
 Clamp/Cage:Copper Alloy,Ni Plated  
 Screws/Torque:Steel,M2.0,Zn Plated/0.2Nm  
 Operating temperature:-40°C ~ +105°C  
 Steip Length:6~7mm



Section: A-A

Order Information  
 L-KLS2-EDCD-3.81-XXP-X X

RoHS  
 Terminal Block  
 Pitch:3.81mm  
 No.:Of (02~24) Pin  
 Color:  
 1=Gray 2=Blue 3=Black  
 4=Green 5=Orange 6=Red  
 7=Transp 8=Yellow 9=White  
 Screw:SC=Slot/Cross  
 S-Slot Screw C-Cross Screw



ANGLE TOLERANCE	PROJECTION	Description:
±3°		Pitch 3.81mm Terminal Block
GENERAL TOLERANCE	UNITS	mm
0~30 ±0.50	SHEET SIZE	A4
30~60 ±0.75	Draw:	WuHao 2024-10-29
60~90 ±1.00	Check:	Daniel 2024-10-29
KLS ELECTRONIC		NingBo KLS ELECTRONIC CO.,L TD.