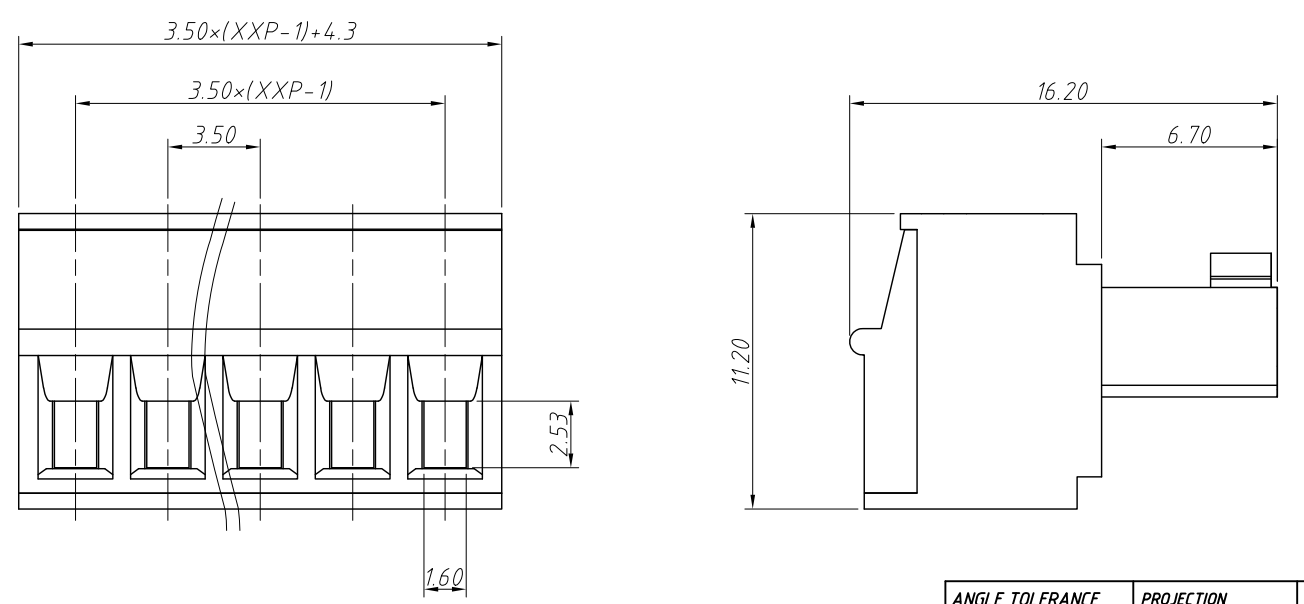
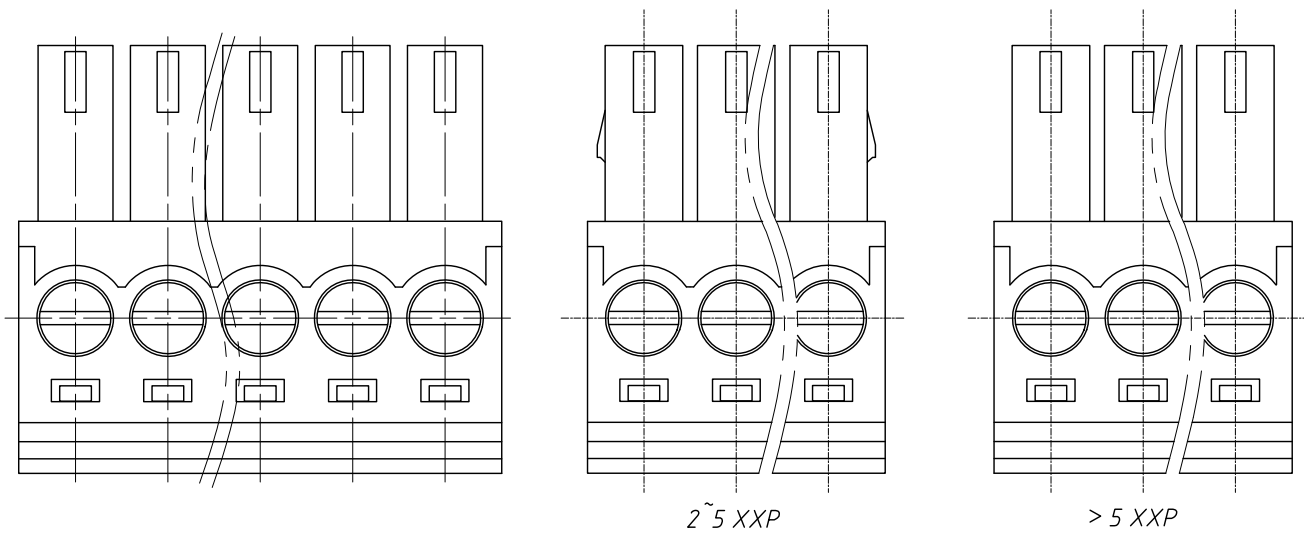


1
RoHS Compliance

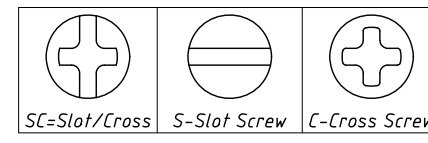
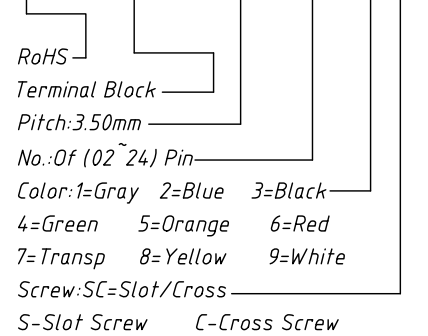
7		8	
REV	SYM	Revision Record	Appr.
V0	KLS02006	New Version Release	WuHao
		Date	2024-10-31



Electrical Characteristics	UL	IEC
Rated Voltage	300V	160V
Rated Current	8A	7A
Withstand Voltage	1600V/1min	2.5KV
Wire Range	28~16 AWG	0.5~1.5mm ²

Material and other:
 Housing: PA66, UL94V-0
 Pin Header: Copper Alloy, Ni Plated
 Screw/Torque: M2/0.2N.m
 Stripping Length: 6~7mm
 Operating Temperature: -40°C ~ +105°C

Order Information
 L-KLS2-EDK-3.50-XXP-XX



ANGLE TOLERANCE	PROJECTION	Description:
±3°		Pitch 3.50mm Terminal Block
GENERAL TOLERANCE	UNITS	mm
0~30 ±0.50	SHEET SIZE	A4
30~60 ±0.75	Draw:	WuHao 2024-10-31
60~90 ±1.00	Check:	Daniel 2024-10-31
		L-KLS2-EDK-3.50-XXP-XX
		NingBo KLS ELECTRONIC CO.,L TD.

1
RoHS Compliance

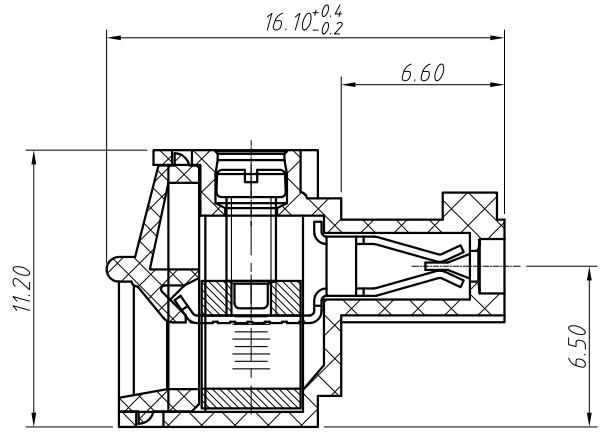
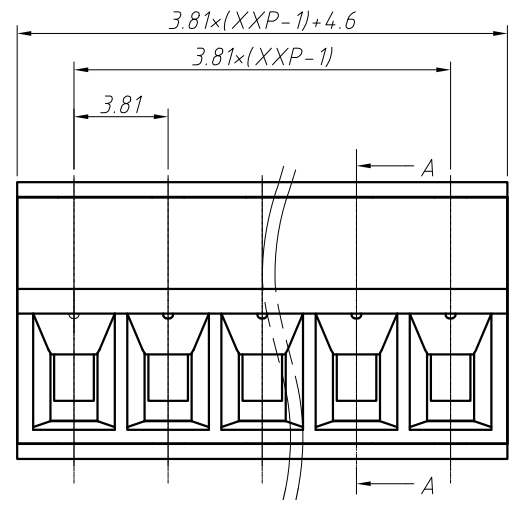
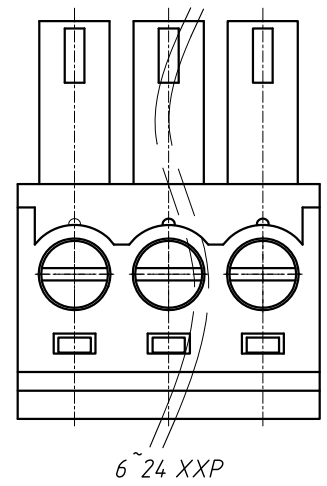
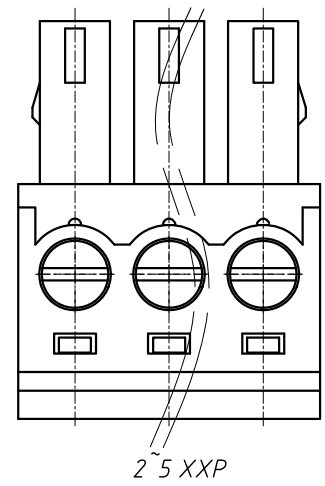
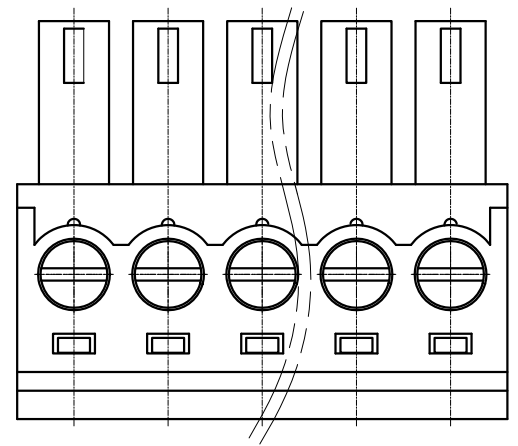
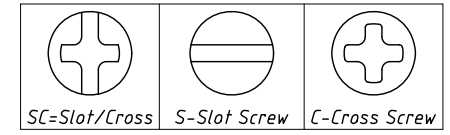
6	7	8
REV	SYM	Revision Record
V0	KLS02006	New Version Release
Appr.	Appr.	Date
WuHao	WuHao	2024-10-31

Electrical Characteristics	UL	IEC
Rated Voltage	300V	250V
Rated Current	8A	7A
Withstand Voltage	AC2000V/1 min	---
Wire Range	28~16 AWG	1.5mm ²

Material and other:
Housing: PA66, UL94V-0
Clamp/Cage: Copper Alloy, Ni Plated
Screw/Torque: Steel, M2, Zn Plated/0.2N.m
Contact resistance: 20mΩ MAX
Insulation resistance: 500MΩ/DC500V
Stripping Length: 6~7mm
Temp. Range: -40°C ~ +105°C

Order Information
L-KLS2-EDK-3.81-XXP-X X

RoHS
Terminal Block
Pitch: 3.81mm
No. of (02~24) Pin
Color: 1=Gray 2=Blue 3=Black
4=Green 5=Orange 6=Red
7=Transp 8=Yellow 9=White
Screw: SC=Slot/Cross
S-Slot Screw C-Cross Screw



ANGLE TOLERANCE	PROJECTION	Description:
±3°		Pitch 3.81mm Terminal Block
GENERAL TOLERANCE	UNITS	KLS P/N:
0~30 ±0.50	mm	L-KLS2-EDK-3.81-XXP-XX
30~60 ±0.75	SHEET SIZE	A4
60~90 ±1.00	Draw:	WuHao 2024-10-31
	Check:	Daniel 2024-10-31

