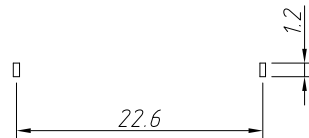
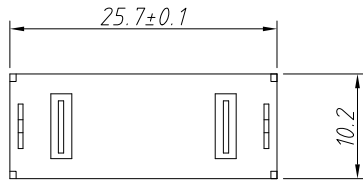
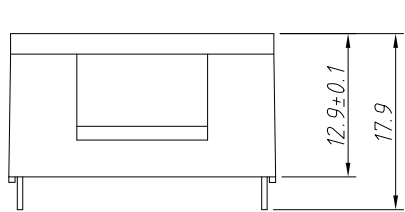


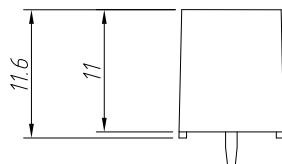
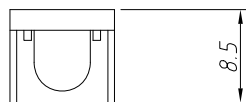
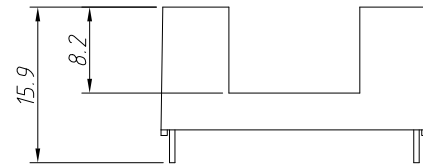
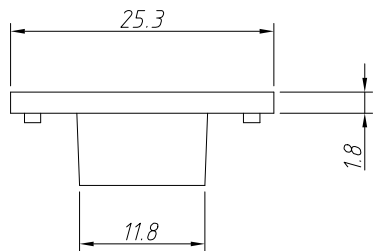
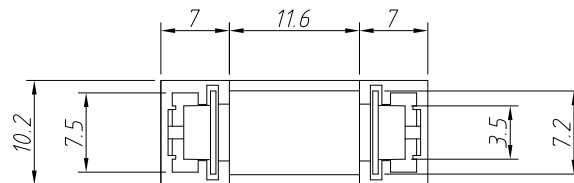
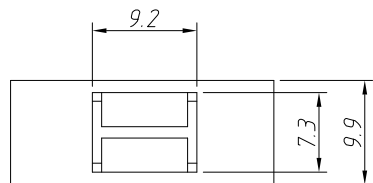
REV	SYM	Revision Record	Appr.	Date
V0	KLS05083	New Version Release	WuHao	2024-11-23



Mounting Holes

Materials:
 Insulator: PA+30%GF
 Contact: Brass, Tin Plated

Electrical:
 Rating Current: 10A
 Rating Voltage: 250V AC
 Contact Resistance: 5mΩ MAX
 Insulation Resistance: 500MΩ Min
 Withstand Voltage: AC 1000V (50Hz) / 1 Min



ANGLE TOLERANCE	PROJECTION	Description:	PCB Fuse Holder For Fuse 5.2X20mm Pitch 22.6mm	
±3°				
GENERAL TOLERANCE	UNITS	mm	KLS P/N:	L-KLS5-2611
.x ±0.30	SHEET SIZE	A4		
.xx ±0.20	Draw:	WuHao	2024-11-23	NingBo KLS ELECTRONIC CO.,L TD.
.xxx ±0.10	Check:	Daniel	2024-11-23	