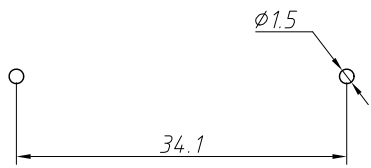
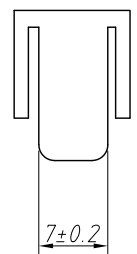
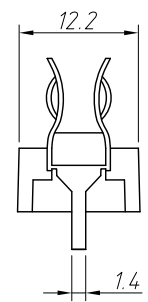
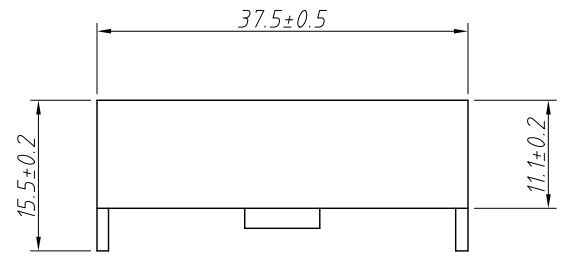
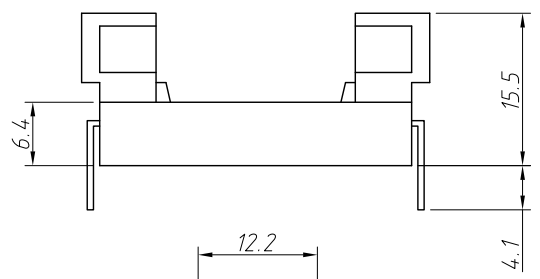
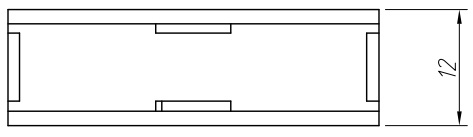
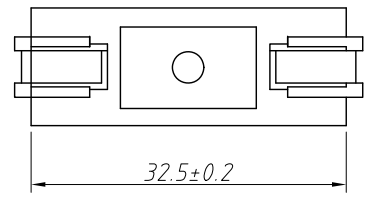
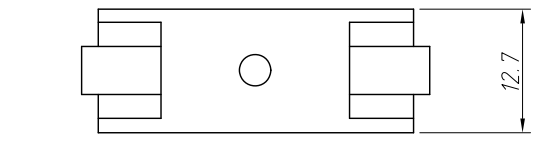


REV	SYM	Revision Record	Appr.	Date
V0	KLS05005	New Version Release	WuHao	2024-11-22

Materials:  
 Bottom: Flame Resisting ABS  
 Cap: Polystyrene  
 Contact: Brass, Tin Plated

Electrical:  
 Rating Current: 6A  
 Rating Voltage: 250V AC  
 Withstand Voltage: AC 1000V (50Hz) / 1 Min



Mounting Holes

ANGLE TOLERANCE	PROJECTION	Description:	PCB Fuse Holder For Fuse 6.3x30mm Pitch 34mm	
±3°				
GENERAL TOLERANCE	UNITS	mm	KLS P/N:	KLS5-244
.x ±0.30	SHEET SIZE	A4		
.xx ±0.20	Draw:	WuHao	2024-11-22	NingBo KLS ELECTRONIC CO.,LTD.
.xxx ±0.10	Check:	Daniel	2024-11-22	