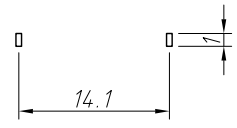
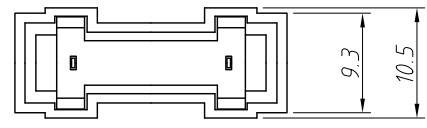
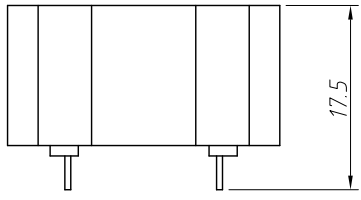


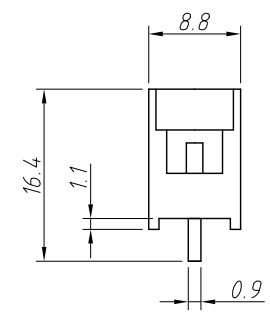
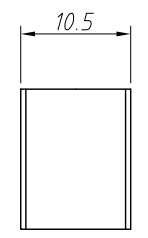
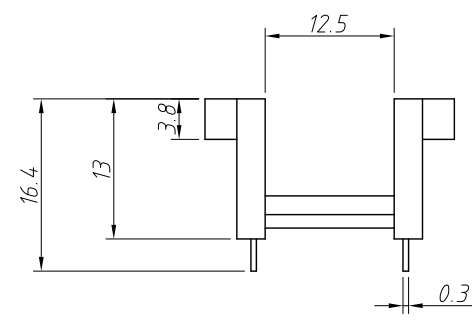
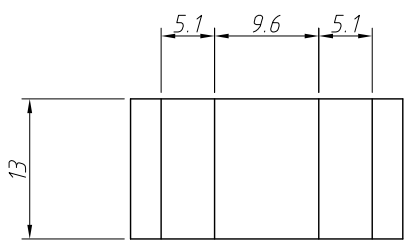
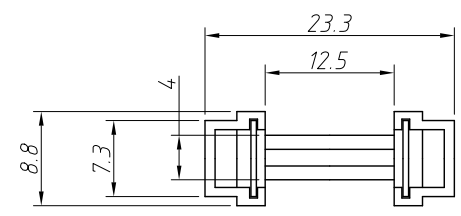
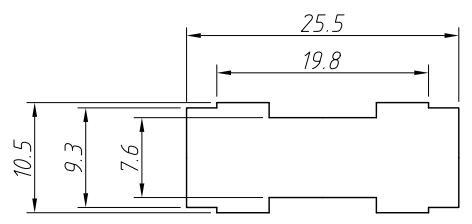
REV	SYM	Revision Record	Appr.	Date
V0	KLS05083	New Version Release	WuHao	2024-11-23



Mounting Holes

Materials:  
 Insulator: Flame Resisting ABS  
 Contact: Brass, Tin Plated

Electrical:  
 Rating Current: 5A  
 Rating Voltage: 250V AC  
 Contact Resistance: 5mΩ MAX  
 Insulation Resistance: 500MΩ Min  
 Withstand Voltage: AC 1000V (50Hz) / 1 Min



ANGLE TOLERANCE	PROJECTION	Description:	PCB Fuse Holder For Fuse 5.2X20mm Pitch 14mm
±3°			
GENERAL TOLERANCE	UNITS	mm	KLS P/N: L-KLS5-251
.x ±0.30	SHEET SIZE	A4	
.xx ±0.20	Draw:	WuHao	2024-11-23
.xxx ±0.10	Check:	Daniel	2024-11-23

