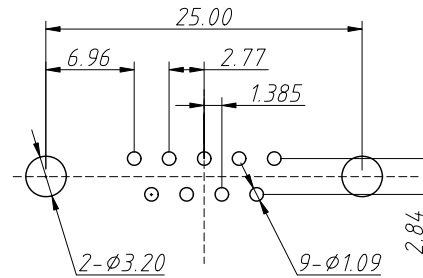
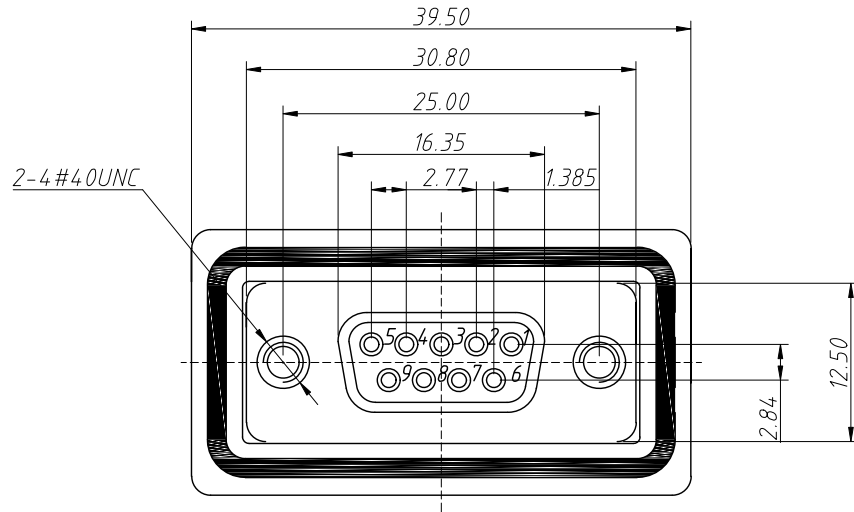


1 RoHS Compliance

7	8			
REV	SYM	Revision Record	Appr.	Date
V0	KLS01545	New Version Release	WuHao	2024-10-10



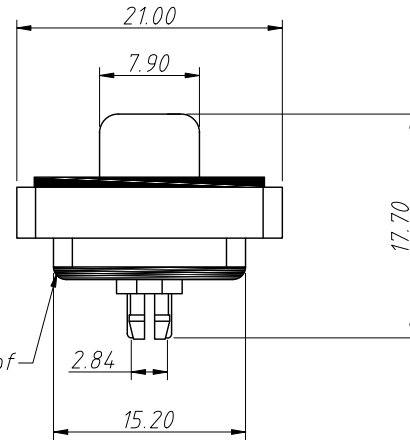
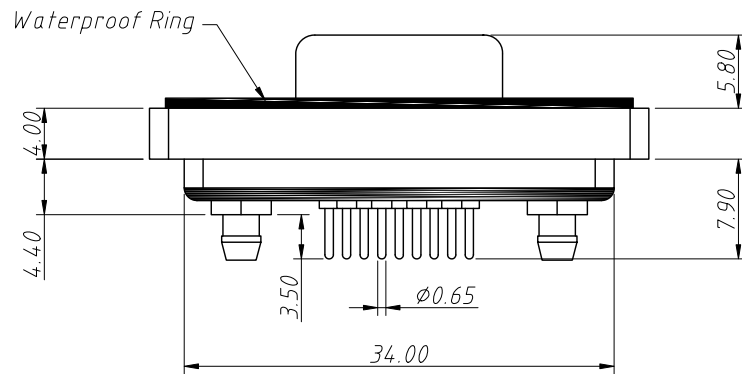
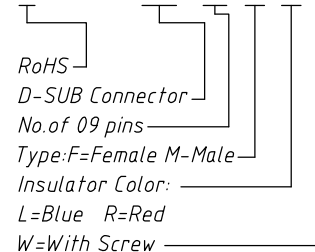
Recommended PCB Layout

Material:
 Rubber Core:PBT rated,UL 94V-0,(Black/White)
 Car Pin:Copper Alloy,Gild 3u-30u
 Ironclad:SPCC,Nickel-plated front shell and tin-plated rear shell
 Waterproof Frame:PA66,Black
 Waterproof Ring:Silica Gel
 Copper Column:Copper Alloy,Tin Plating
 Screw:Copper Alloy,Nickel Plating

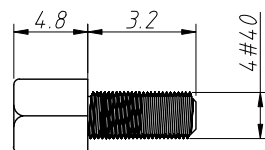
Electric:
 Rated Voltage:500V AC Min
 Rated Current:5A
 Contact Resistance:30mΩ Max
 Insulator Resistance:3000mΩ Min,At 500V DC
 Withstanding Voltage:1000V AC RMS For 1Minute
 Temperature Range:-55°C ~ +105°C
 Waterproof Class:IP67
 After 48 hours of salt spray testing, there should be no oxidation or rust phenomenon
 The finished product must not have bent needle defects

Order Information

L-KLS1-123-09-M-B-W



Attached Waterproof Screws



ANGLE TOLERANCE	PROJECTION	Description:	D-SUB Connector, Male	
±3°				
GENERAL TOLERANCE	UNITS	mm	KLS P/N:	L-KLS1-123-09-M-B-W
x. ±0.5	SHEET SIZE	A4		
x.x ±0.3	Draw:	WuHao	2024-10-10	NingBo KLS ELECTRONIC CO.,L TD.
x.xx ±0.2	Check:	Daniel	2024-10-10	