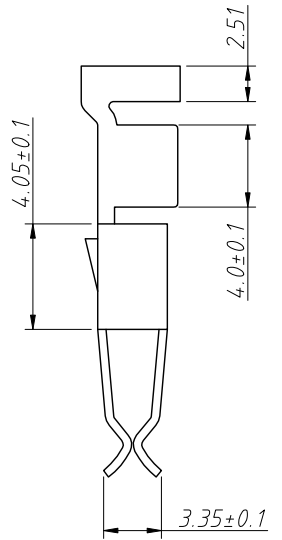
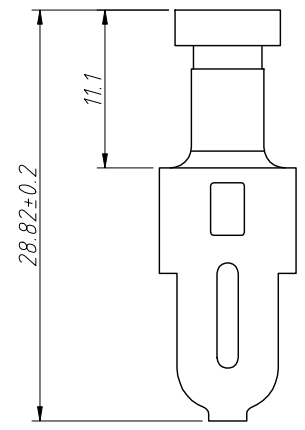
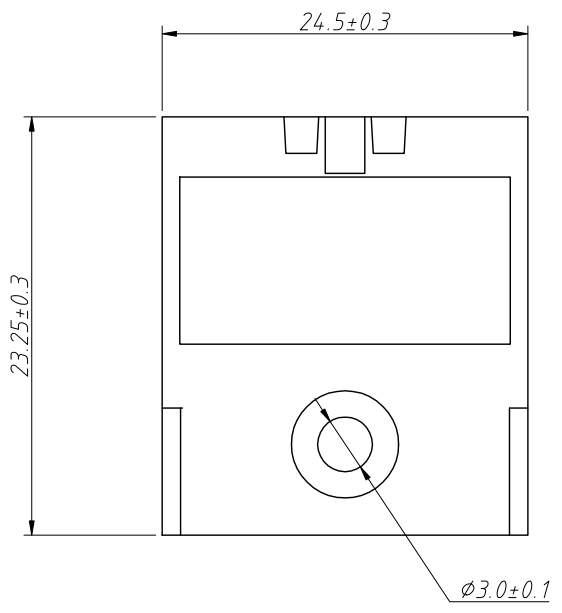
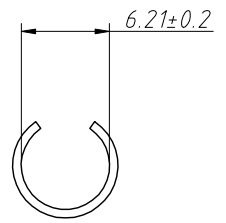
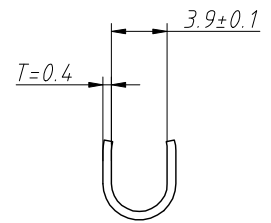
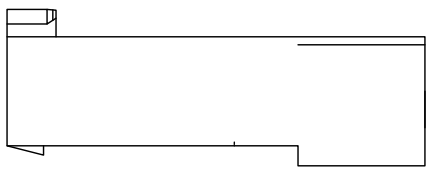
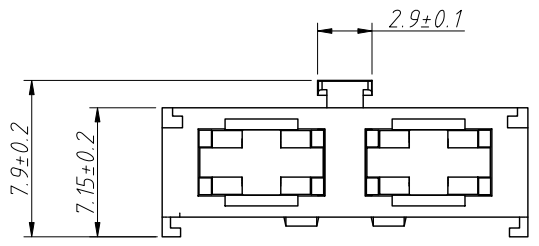


1  
RoHS Compliance

6		7		8	
REV	SYM	Revision Record		Appr.	Date
V0	KLS	New Version Release		Song	2024-11-04



Notes:  
 1.Material:  
 Insulation Body: Nylon  
 Contacts: Brass, T= 0.5mm, Bright Tin plated  
 2.Rating: Max. 30A 32V  
 3.Terminal connecting forces: Insertion and withdrawal 35~50N

ANGLE TOLERANCE	PROJECTION	Description:			
±3°		Fuse Holder			
GENERAL TOLERANCE	UNITS	mm	KLS P/N:	L-KLS5-7035	
.x ±0.30	SHEET SIZE	A4			
.xx ±0.20	Draw:	Song	2024-11-04	NingBo KLS ELECTRONIC CO.,L TD.	
.xxx ±0.10	Check:	Daniel	2024-11-04		