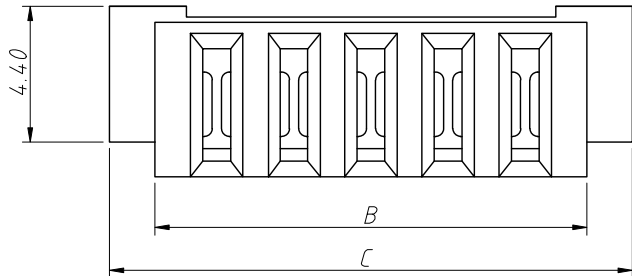


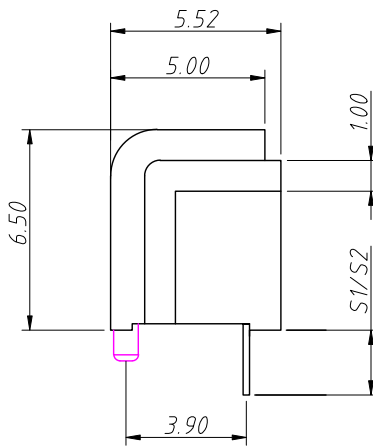
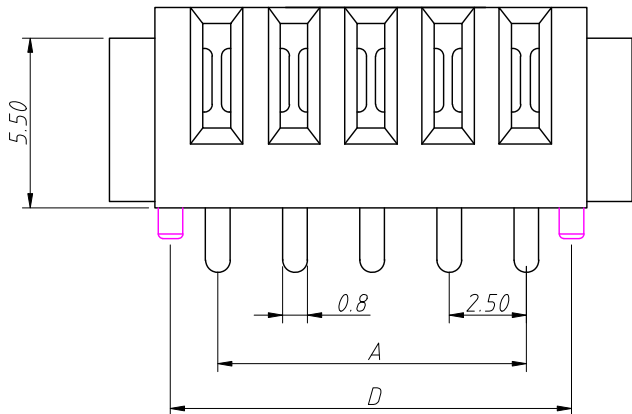
1 RoHS Compliance

6	7	8
REV	SYM	Revision Record
V0	KLS05084	New Version Release
Appr.	Date	
Song	2024-11-01	



Material:
 Housing:Nylon 9T,UL 94 V-0
 Contact:Phosphor Bronze
 Contact Plated:Gold over Nickel or Tin

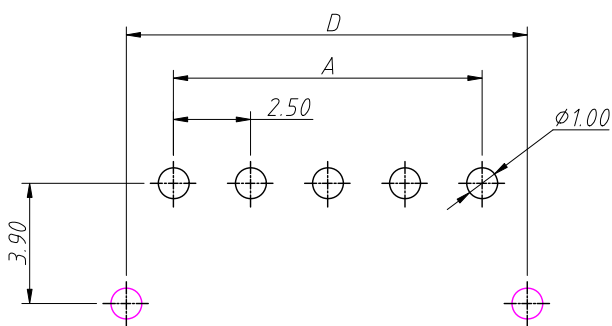
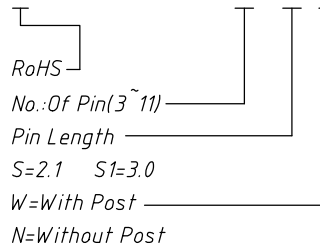
Electrical:
 Current Rating:7A
 Instant Current:10A
 Contact Resistance:30mΩ Max.
 Insulation resistance:100MΩ Min
 Dielectric Voltage:500V
 Operating Temperature:-40°C ~ +105°C



No. of Pins	Dimension				
	A	B	C	D	S1/S2
03	5.00	9.00	11.95	8.00	2.1/3.0
04	7.50	11.50	14.45	10.50	2.1/3.0
05	10.00	14.00	16.95	13.00	2.1/3.0
06	12.50	16.50	19.45	15.50	2.1/3.0
07	15.00	19.00	21.95	18.00	2.1/3.0
08	17.50	21.50	24.45	20.50	2.1/3.0
09	20.00	24.00	26.95	23.00	2.1/3.0
10	22.50	26.50	29.45	25.50	2.1/3.0
11	25.00	29.00	31.95	28.00	2.1/3.0
12	27.50	31.50	34.45	30.50	2.1/3.0

Order Information

L-KLS1-LBC05-7P-S-W



Recommended PCB Layout
 Tolerance:±0.05mm

ANGLE TOLERANCE	PROJECTION	Description:	2.5mm Pitch Laptop Battery Connector Female 3~12 Pins	
±3°				
GENERAL TOLERANCE	UNITS	mm	KLS P/N:	L-KLS1-LBC05-XP-X-X
x. ±0.20	SHEET SIZE	A4		
x.x ±0.15	Draw:	Song	2024-11-01	NingBo KLS ELECTRONIC CO.,L TD.
x.xx ±0.10	Check:	Daniel	2024-11-01	