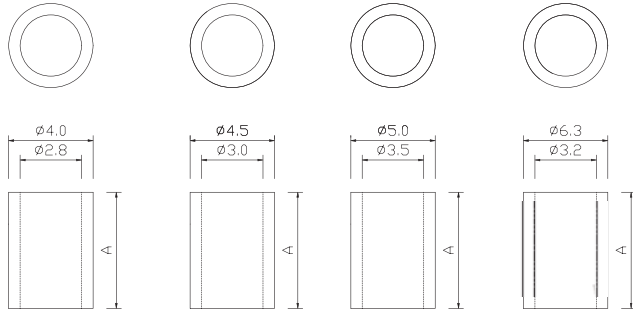


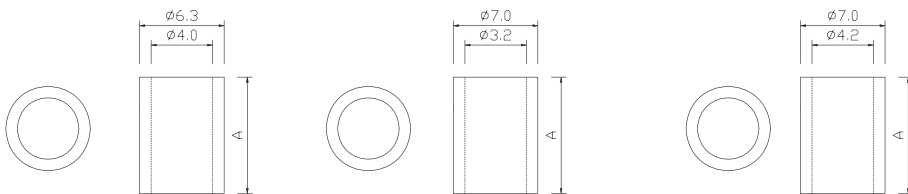
Led Spacer Support Series

KLS8-0114A Led Spacer Support Series

Material: UL approved Nylon 66, 94V-2
Unit:mm



KLS8-0110 KLS8-0111 KLS8-0112 KLS8-0113A



KLS8-0113B

KLS8-0114A

KLS8-0115

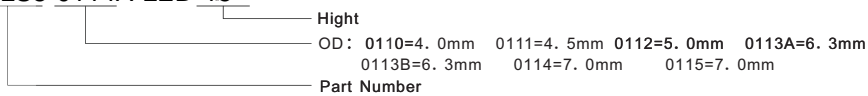
| Model No. | A | Packaging |
|-----------|-----|-----------|
| LED-1.5 | 1.5 | 2000 |
| LED-2 | 2 | |
| LED-2.5 | 2.5 | |
| LED-3 | 3 | |
| LED-3.5 | 3.5 | |
| LED-4 | 4 | |
| LED-4.5 | 4.5 | |
| LED-5 | 5 | |
| LED-5.5 | 5.5 | |
| LED-6 | 6 | |
| LED-6.5 | 6.5 | |
| LED-6.8 | 6.8 | |
| LED-7 | 7 | |
| LED-7.5 | 7.5 | |
| LED-8 | 8 | |
| LED-8.5 | 8.5 | |
| LED-8.8 | 8.8 | |
| LED-9 | 9 | |
| LED-9.5 | 9.5 | |
| LED-10 | 10 | |

| Model No. | A | Packaging |
|-----------|------|-----------|
| LED-10.5 | 10.5 | 2000 |
| LED-11 | 11 | |
| LED-11.5 | 11.5 | |
| LED-12 | 12 | |
| LED-12.5 | 12.5 | |
| LED-13 | 13 | |
| LED-13.5 | 13.5 | |
| LED-14 | 14 | |
| LED-14.5 | 14.5 | 1000 |
| LED-15 | 15 | |
| LED-15.5 | 15.5 | |
| LED-16 | 16 | |
| LED-16.5 | 16.5 | |
| LED-17 | 17 | |
| LED-17.5 | 17.5 | |
| LED-18 | 18 | |
| LED-18.5 | 18.5 | |
| LED-19 | 19 | |
| LED-19.5 | 19.5 | |
| LED-20 | 20 | |

| Model No. | A | Packaging |
|-----------|------|-----------|
| LED-20.5 | 20.5 | 1000 |
| LED-21 | 21 | |
| LED-21.5 | 21.5 | |
| LED-22 | 22 | |
| LED-22.5 | 22.5 | |
| LED-23 | 23 | |
| LED-23.5 | 23.5 | |
| LED-24 | 24 | |
| LED-24.5 | 24.5 | |
| LED-25 | 25 | |
| LED-25.5 | 25.5 | |
| LED-26 | 26 | |
| LED-26.5 | 26.5 | |
| LED-27 | 27 | |
| LED-27.5 | 27.5 | |
| LED-28 | 28 | |
| LED-28.5 | 28.5 | |
| LED-29 | 29 | |
| LED-29.5 | 29.5 | |
| LED-30 | 30 | |

ORDER INFORMATION

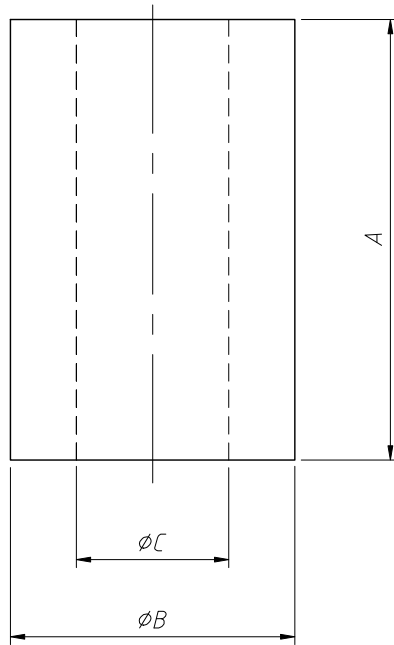
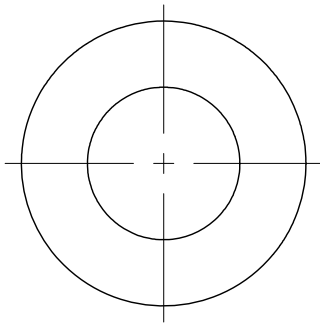
KLS8-0114A-LED-15



All specification & dimensions are subject to change, please call your nearest KLS sales representative for update information

1
RoHS Compliance

| | | |
|-------|----------|---------------------|
| 6 | 7 | 8 |
| REV | SYM | Revision Record |
| V0 | KLS08011 | New Version Release |
| Appr. | Jenny | Date |
| | | 2024-04-22 |



| ITEM NO: | A | ∅B | ∅C |
|---------------|------|-----|-----|
| 0112-LED-1.5 | 1.5 | 5.0 | 3.5 |
| 0112-LED-2.0 | 2.0 | | |
| 0112-LED-2.5 | 2.5 | | |
| 0112-LED-3.5 | 3.5 | | |
| 0112-LED-4.0 | 4.0 | | |
| 0112-LED-10.0 | 10.0 | | |
| 0112-LED-10.5 | 10.5 | | |
| 0112-LED-11.0 | 11.0 | | |
| 0112-LED-12.5 | 12.5 | | |
| 0112-LED-13.5 | 13.5 | | |
| 0112-LED-14.5 | 14.5 | | |
| 0112-LED-15.0 | 15.0 | | |
| 0112-LED-15.5 | 15.5 | | |
| 0112-LED-16.0 | 16.0 | | |
| 0112-LED-16.5 | 16.5 | | |
| 0112-LED-17.5 | 17.5 | | |
| 0112-LED-18.5 | 18.5 | | |
| 0112-LED-19.5 | 19.5 | | |
| 0112-LED-20.0 | 20.0 | | |
| 0112-LED-20.5 | 20.5 | | |
| 0112-LED-21.5 | 21.5 | | |
| 0112-LED-22.5 | 22.5 | | |
| 0112-LED-23.5 | 23.5 | | |
| 0112-LED-24.5 | 24.5 | | |
| 0112-LED-25.0 | 25.0 | | |
| 0112-LED-25.5 | 25.5 | | |

Notes:

Material: PA66,UL 94V-2,Natural

Operating Temperature:0°C~+80°C

Withstanding Voltage:2500V /0.5mA/1Sec

Temperature Resistance: Class B 130° (Requires 200°

Baking For 30 Minutes Without Melting)

The Appearance Shall Be Free Of Defects Such As Burrs, Burrs, Shrinkage, Etc

This Product Does Not Contain Lead (Pb), Mercury (Hg), Pot (Cd), Hexavalent Inscription (Cr VI)

The Material Used In This Product Has A Water Absorption Of 2.5% After 24 Hours Immersion At A Temperature Of 23 °C And A Relative Humidity Of 50%

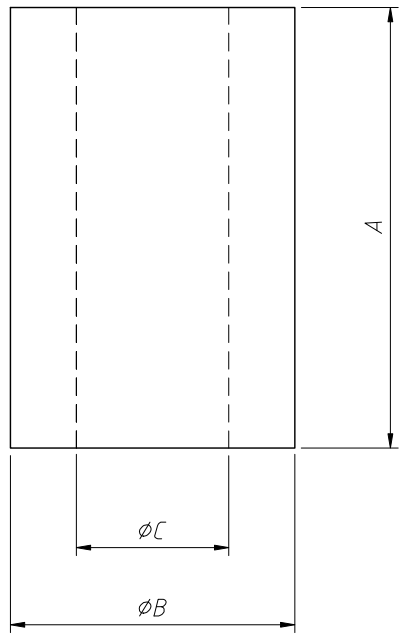
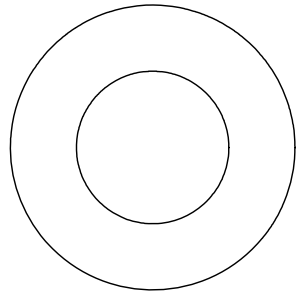
Used to Protect The LED From Bending, Breaking, Or Short Circuiting When Standing On The PCB

| | | | | | | |
|-------------------|------------|--------------|--------------------|---------------------------------|--|--|
| ANGLE TOLERANCE | PROJECTION | Description: | LED Spacing Column | | | |
| ±3° | | | | | | |
| GENERAL TOLERANCE | UNITS | mm | KLS P/N: | L-KLS8-0112-LED-XX | | |
| 1~4 ±0.15 | SHEET SIZE | A4 | | | | |
| 4~15 ±0.2 | Draw: | Jenny | 2024-04-22 | NingBo KLS ELECTRONIC CO.,L TD. | | |
| 15~30 ±0.3 | Check: | Daniel | 2024-04-22 | | | |

| | | | | | | |
|-----------|-------|------|-------|-------|--------|------|
| Unmarked | 0~4 | 4~15 | 15~30 | 30~50 | 50~100 | 100~ |
| Tolerance | ±0.15 | ±0.2 | ±0.3 | ±0.5 | ±0.7 | ±1.0 |

1
RoHS Compliance

| | | |
|-----|----------|---------------------|
| 6 | 7 | 8 |
| REV | SYM | Revision Record |
| V0 | KLS08011 | New Version Release |
| | | Appr. |
| | | Jenny |
| | | Date |
| | | 2024-09-11 |



| ITEM NO: | A | φB | φC |
|----------------|------|-----|-----|
| 0113B-LED-2.5 | 2.5 | 6.3 | 4.0 |
| 0113B-LED-3 | 3 | | |
| 0113B-LED-3.5 | 3.5 | | |
| 0113B-LED-4 | 4 | | |
| 0113B-LED-10.5 | 10.5 | | |
| 0113B-LED-11 | 11 | | |
| 0113B-LED-12 | 12 | | |
| 0113B-LED-12.5 | 12.5 | | |
| 0113B-LED-13.5 | 13.5 | | |
| 0113B-LED-14.5 | 14.5 | | |
| 0113B-LED-15.5 | 15.5 | | |
| 0113B-LED-16.5 | 16.5 | | |
| 0113B-LED-17.5 | 17.5 | | |
| 0113B-LED-18.5 | 18.5 | | |
| 0113B-LED-19 | 19 | | |
| 0113B-LED-19.5 | 19.5 | | |
| 0113B-LED-20 | 20 | | |
| 0113B-LED-20.5 | 20.5 | | |
| 0113B-LED-21.5 | 21.5 | | |
| 0113B-LED-22.5 | 22.5 | | |
| 0113B-LED-23.5 | 23.5 | | |
| 0113B-LED-24.5 | 24.5 | | |
| 0113B-LED-25.5 | 25.5 | | |
| 0113B-LED-26.5 | 26.5 | | |
| 0113B-LED-27.5 | 27.5 | | |
| 0113B-LED-28.5 | 28.5 | | |
| 0113B-LED-29.5 | 29.5 | | |

Notes:
 Material: PA66,UL 94V-2,Natural
 Operating Temperature:0°C~+80°C
 Withstanding Voltage:2500V /0.5mA/1Sec
 Temperature Resistance: Class B 130° (Requires 200°
 Baking For 30 Minutes Without Melting)

The Appearance Shall Be Free Of Defects Such As
 Burrs, Burrs, Shrinkage, Etc

This Product Does Not Contain Lead (Pb), Mercury (Hg),
 Pot (Cd), Hexavalent Inscription (Cr VI)

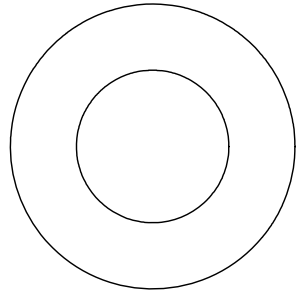
The Material Used In This Product Has A Water
 Absorption Of 2.5% After 24 Hours Immersion At A
 Temperature Of 23 °C And A Relative Humidity Of 50%

Used to Protect The LED From Bending, Breaking, Or
 Short Circuiting When Standing On The PCB

| | | | | |
|-------------------|------------|--------------|--------------------|---------------------------------|
| ANGLE TOLERANCE | PROJECTION | Description: | LED Spacing Column | |
| ±3° | | | | |
| GENERAL TOLERANCE | UNITS | mm | KLS P/N: | L-KLS8-0113B-LED-XX |
| 1~4 ±0.15 | SHEET SIZE | A4 | XX | NingBo KLS ELECTRONIC CO.,L TD. |
| 4~15 ±0.2 | Draw: | Jenny | 2024-09-11 | |
| 15~30 ±0.3 | Check: | Daniel | 2024-09-11 | |

1
RoHS Compliance

| | | |
|-----|----------|---------------------|
| 6 | 7 | 8 |
| REV | SYM | Revision Record |
| V0 | KLS08011 | New Version Release |
| | | Appr. |
| | | Jenny |
| | | Date |
| | | 2024-09-11 |



| ITEM NO: | A | ∅B | ∅C |
|---------------|------|-----|-----|
| 0115-LED-2 | 2.0 | 7.0 | 4.2 |
| 0115-LED-2.5 | 2.5 | | |
| 0115-LED-10.5 | 10.5 | | |
| 0115-LED-11 | 11 | | |
| 0115-LED-12 | 12 | | |
| 0115-LED-12.5 | 12.5 | | |
| 0115-LED-13 | 13 | | |
| 0115-LED-13.5 | 13.5 | | |
| 0115-LED-14.5 | 14.5 | | |
| 0115-LED-15 | 15 | | |
| 0115-LED-15.5 | 15.5 | | |
| 0115-LED-16.5 | 16.5 | | |
| 0115-LED-17 | 17 | | |
| 0115-LED-17.5 | 17.5 | | |
| 0115-LED-18 | 18 | | |
| 0115-LED-18.5 | 18.5 | | |
| 0115-LED-19 | 19 | | |
| 0115-LED-19.5 | 19.5 | | |
| 0115-LED-20 | 20 | | |
| 0115-LED-20.5 | 20.5 | | |
| 0115-LED-21.5 | 21.5 | | |
| 0115-LED-22.5 | 22.5 | | |
| 0115-LED-23.5 | 23.5 | | |
| 0115-LED-24.5 | 24.5 | | |

Notes:

Material: PA66,UL 94V-2,Natural

Operating Temperature:0°C~+80°C

Withstanding Voltage:2500V /0.5mA/1Sec

Temperature Resistance: Class B 130° (Requires 200°

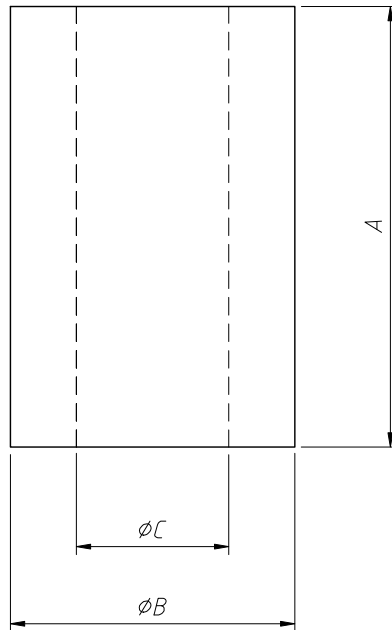
Baking For 30 Minutes Without Melting)

The Appearance Shall Be Free Of Defects Such As
Burrs, Burrs, Shrinkage, Etc

This Product Does Not Contain Lead (Pb), Mercury (Hg),
Pot (Cd), Hexavalent Inscription (Cr VI)

The Material Used In This Product Has A Water
Absorption Of 2.5% After 24 Hours Immersion At A
Temperature Of 23 °C And A Relative Humidity Of 50%

Used to Protect The LED From Bending, Breaking, Or
Short Circuiting When Standing On The PCB



| | | | | |
|-------------------|------------|--------------|--------------------|---------------------------------|
| ANGLE TOLERANCE | PROJECTION | Description: | LED Spacing Column | |
| ±3° | | | | |
| GENERAL TOLERANCE | UNITS | mm | KLS P/N: | L-KLS8-0115-LED-XX |
| 1~4 ±0.15 | SHEET SIZE | A4 | XX | NingBo KLS ELECTRONIC CO.,L TD. |
| 4~15 ±0.2 | Draw: | Jenny | 2024-09-11 | |
| 15~30 ±0.3 | Check: | Daniel | 2024-09-11 | |