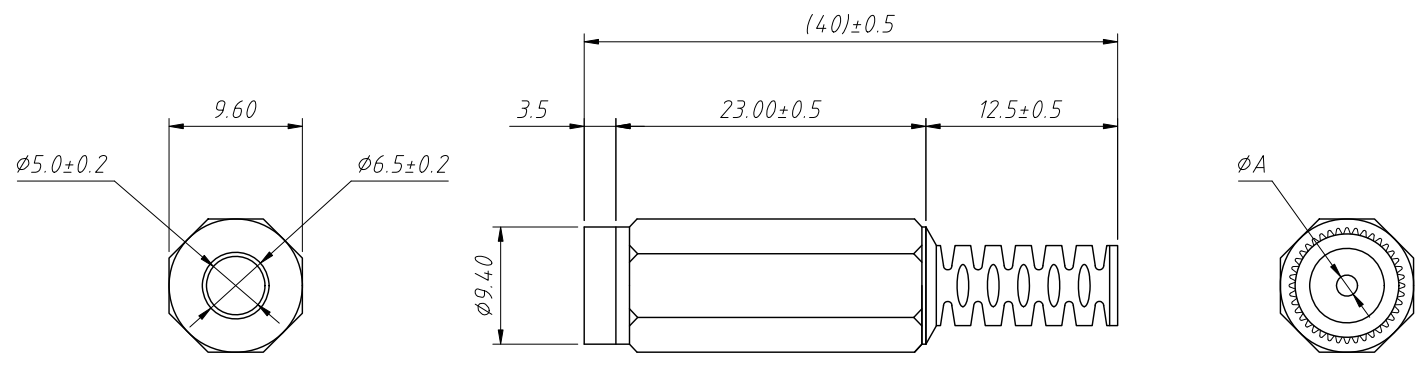


1
RoHS Compliance

6	7	8
REV	SYM	Revision Record
V0	KLS01105	New Version Release
		Appr. Jenny
		Date 2024-09-10



Material:
Housing:P-E (Black)
Contact:Brass, nickel plated

Electric:
Contact Resistance: $0.03m\Omega$, Max
Insulation Resistance: $100M\Omega$, Min
Pressure:AC500V (50Hz) / 1 minute
Rated Load:DC30V, 1.0A
Actuating Force: $3 \sim 20N$
Life:5000 times
Operating Temperature: $-30^{\circ}C \sim 70^{\circ}C$

Part No.	DC Power Plug	A
L-KLS1-DCP-03-2.1A	2.1mm	2.1
L-KLS1-DCP-03-2.5A	2.5mm	2.5
L-KLS1-DCP-03-3.5A	3.5mm	3.5

Order Information:
L-KLS1-DCP-03-XXA

```

graph TD
    A[L-KLS1-DCP-03-XXA] --- B[L: RoHS]
    A --- C[DC Plug]
    A --- D[DC Power Plug]
    B --- E[See Annex]
    C --- E
    D --- E
  
```

L: RoHS
DC Plug
DC Power Plug
See Annex

ANGLE TOLERANCE	PROJECTION	Description:	
$\pm 3^{\circ}$			DC power plug connectors
GENERAL TOLERANCE	UNITS	mm	KLS P/N: L-KLS1-DCP-03-XXA
x.x ± 0.30	SHEET SIZE	A4	
x.xx ± 0.20	Draw:	Jenny	2024-09-10
x.xxx ± 0.10	Check:	Daniel	2024-09-10

