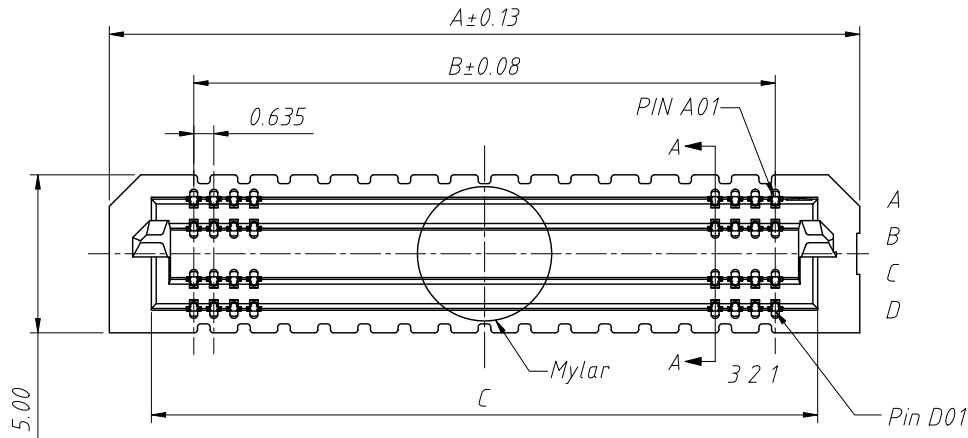


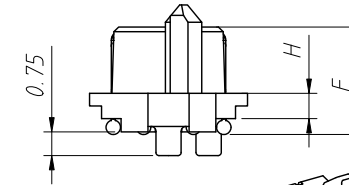
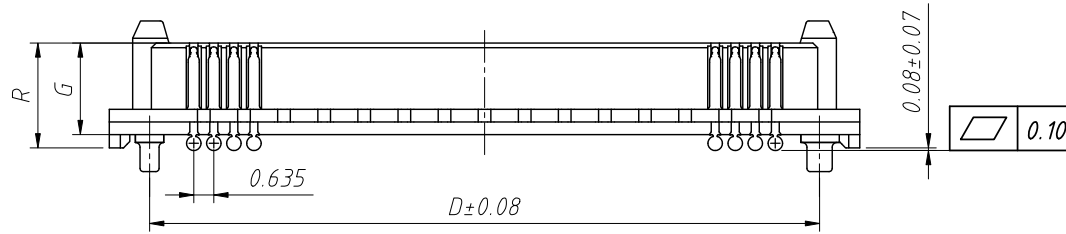
1 RoHS Compliance

REV	SYM	Revision Record	Appr.	Date
V0	KLS01629	New Version Release	Jenny	2024-07-10

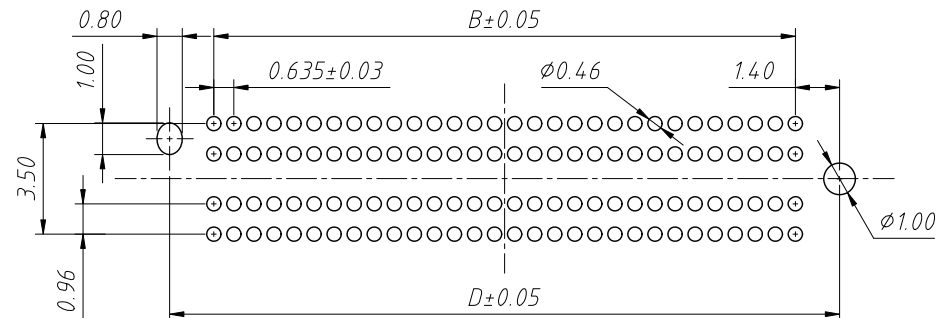
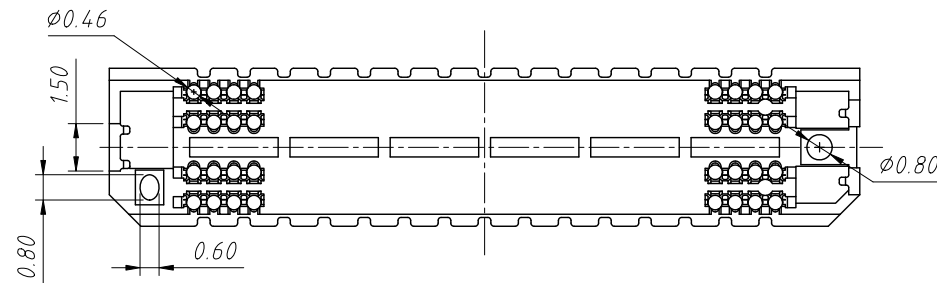


Mating Height (M/H)	Plug Height (M)	Socket Height (F)
5.00	1.50	3.50
7.00	3.50	
10.00	6.50	
12.00	8.50	
9.00	1.50	7.50
11.00	3.50	
14.00	6.50	
16.00	8.50	

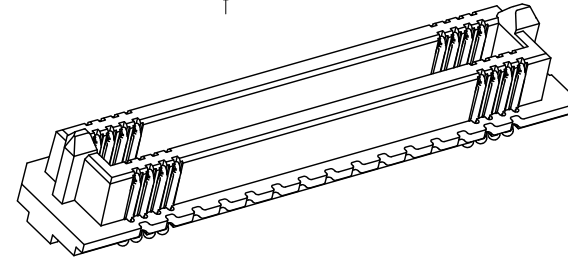
Pin	A	B	C	D
40	11.07	5.715	8.395	8.52
80	17.42	12.065	14.745	14.87
120	23.77	18.415	21.095	21.22
160	30.12	24.765	27.445	27.57
200	36.47	31.115	33.795	33.92
240	42.82	37.465	40.145	40.27
280	49.17	43.815	46.495	46.62
320	55.52	50.165	52.845	52.97
360	61.87	56.515	59.195	59.32
400	68.22	62.865	65.545	65.67



Plug	F	G	H	R
1.50	3.40	2.90	0.80	3.32
3.50	5.40	4.90	2.80	15.32
6.50	8.40	7.90	5.80	8.32
8.50	10.40	9.90	7.80	10.32



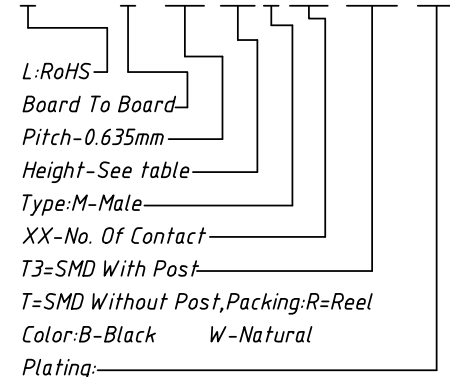
Recommended PCB Layout General Tolerance ±0.05



Material:  
 Housing: LCP, UL 94V-0, Black  
 Contact: Copper Alloy, 10u" Half Gold Tin  
 Electrical:  
 Current Rating: 1.34A  
 Voltage Rating: 155 V AC  
 Operating Temperature: -55°C TO +125°C  
 High-Speed Channel Performance 56Gbps

Order Information:

L-KLS1-B02635-XX M XX-T3RB-GF1



ANGLE TOLERANCE	PROJECTION	Description:		
±3°		0.635mm Board To Board Plug		
GENERAL TOLERANCE	UNITS	mm	KLS P/N:	L-KLS1-B02635-XXMXX-T3RB-GF1
x.x ±0.30	SHEET SIZE	A4		
x.xx ±0.20	Draw:	Jenny	2024-07-10	NingBo KLS ELECTRONIC CO.,L TD.
x.xxx ±0.10	Check:	Daniel	2024-07-10	

RoHS Compliance

REV	SYM	Revision Record	Appr.	Date
V0	KLS01629	New Version Release	Jenny	2024-07-10

**Material:**

Huosing:LCP,UL 94V-0,Black

Contact:Copper Alloy,10u" Half Gold Tin

Electrical:

Current Rating:1.34A

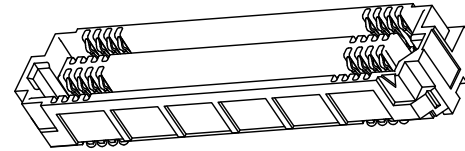
Voltage Rating :155 V AC

Operating Temperature:-55°C TO +125°C

High-Speed Channel Performance 56Gbps

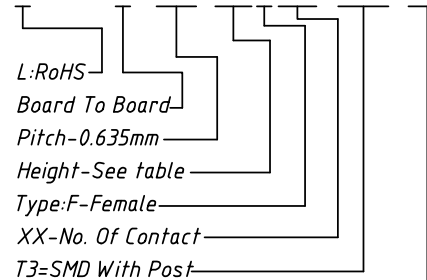
Pin	A	B	C	D
40	11.07	5.715	8.595	8.52
80	17.42	12.065	14.945	14.87
120	23.77	18.415	21.295	21.22
160	30.12	24.765	27.645	27.57
200	36.47	31.115	33.995	33.92
240	42.82	37.465	40.345	40.27
280	49.17	43.815	46.695	46.62
320	55.52	50.165	53.045	52.97
360	61.87	56.515	59.395	59.32
400	68.22	62.865	65.745	65.67

Socket	K	L	H
3.50	3.23	3.65	3.73
7.50	7.23	7.65	7.73



**Order Information:**

L-KLS1-B02635-XX F XX-T3RB-GF1



L:RoHS  
Board To Board  
Pitch-0.635mm  
Height-See table  
Type:F-Female  
XX-No. Of Contact  
T3=SMD With Post

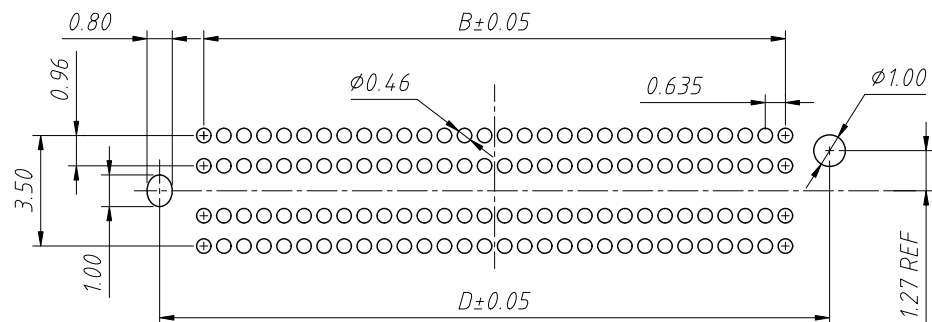
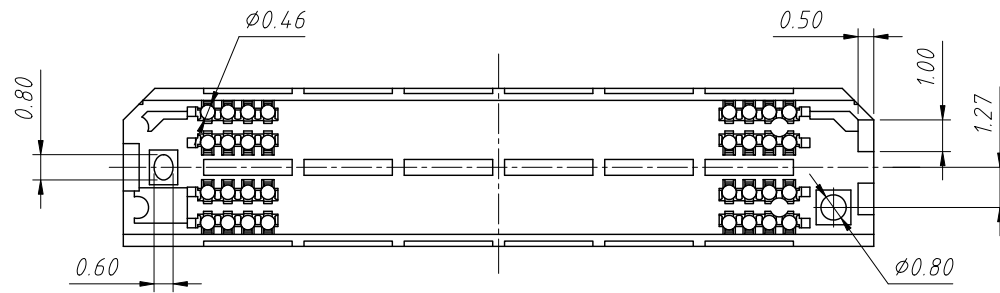
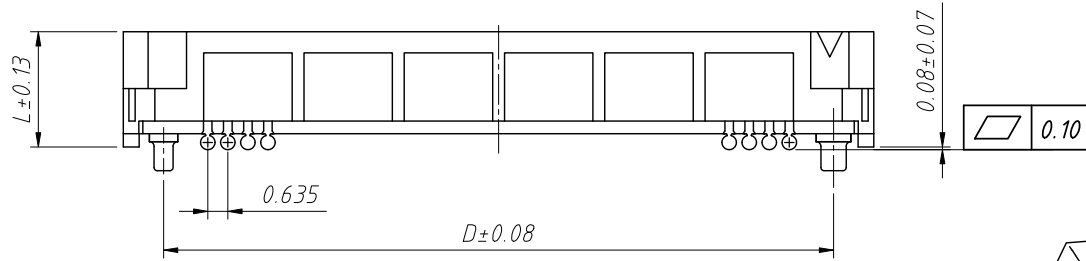
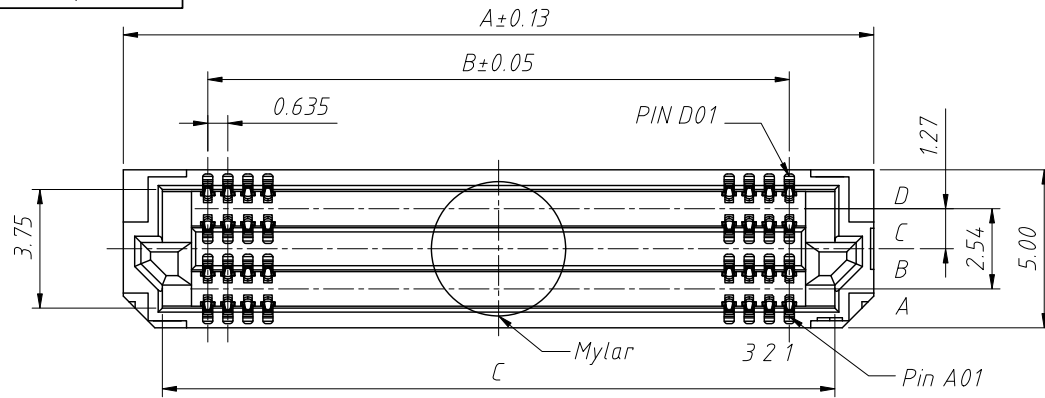
T=SMD Without Post,Packing:R=Reel  
Color:B-Black W-Natural  
Plating:  
GF1-1u" Half Gold Tin G1=1u"Gold  
GF10-10u" Half Gold Tin Sn=Sn Gold

Mating Height (M/H)	Plug Height (M)	Socket Height (F)
5.00	1.50	3.50
7.00	3.50	
10.00	6.50	
12.00	8.50	7.50
9.00	1.50	
11.00	3.50	
14.00	6.50	
16.00	8.50	

ANGLE TOLERANCE	PROJECTION	Description:
±3°		0.635mm Board To Board Socket
GENERAL TOLERANCE	UNITS	mm
x.x ±0.30	SHEET SIZE	A4
x.xx ±0.20	Draw:	Jenny 2024-07-10
x.xxx ±0.10	Check:	Daniel 2024-07-10



NingBo KLS ELECTRONIC CO.,L TD.



Recommended PCB Layout General Tolerance ±0.05