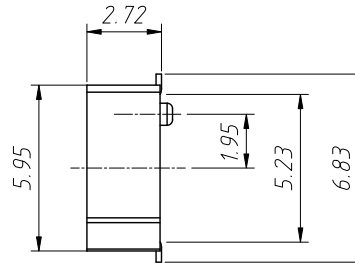
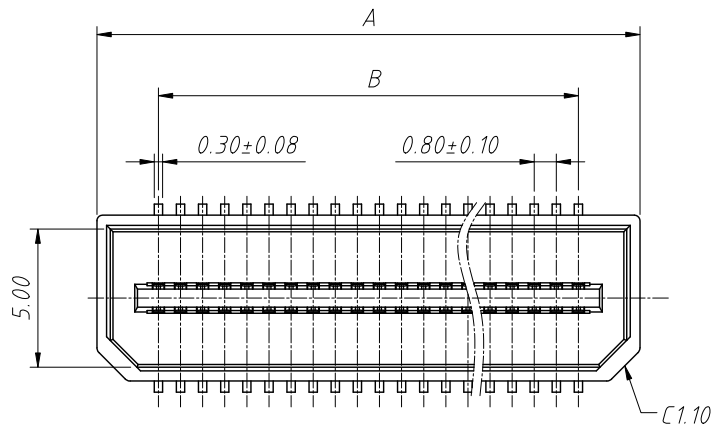


1 RoHS Compliance

REV	SYM	Revision Record	Appr.	Date
V0	KLS01629	New Version Release	Jenny	2024-07-10

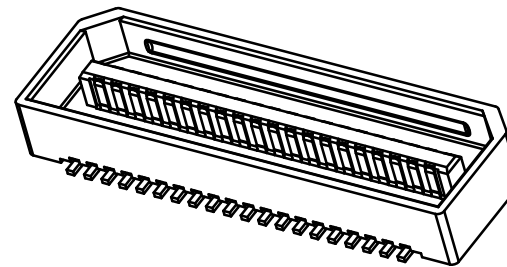
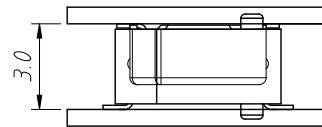
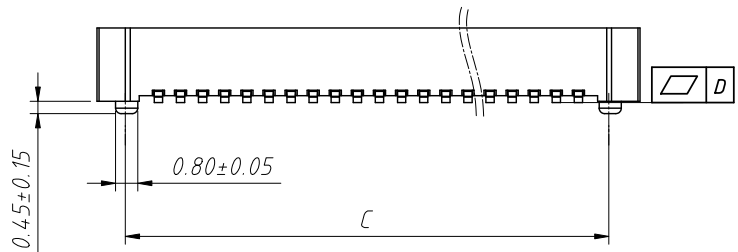


Material:
 Insulator: High Temperature, UL 94 V-0
 Terminal: Phosphor Bronze, Gold plating

Electrical:
 Rated Voltage: 60V AC/DC
 Rated Current: 0.5 AMPS
 Dielectric Withstanding: 250V AC
 Insulation resistance: 1000mΩ min
 Contact resistance: 60mΩ max

Mechanical Performance Requirements
 Insertion force: Maximum 57.46N
 Output: Minimum 8.50N
 Operating Temperature: -55°C ~ +85°C

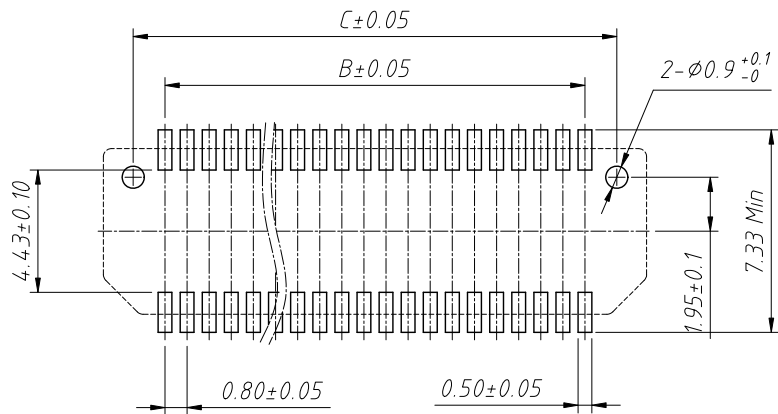
Pins	Dimensions(mm)			
	A	B	C	D
12	8.45	4.00	6.30	0.10
14	9.25	4.80	7.10	
16	10.05	5.60	7.90	
20	11.65	7.20	9.50	
22	12.45	8.00	10.30	
24	13.25	8.80	11.10	
26	14.05	9.60	11.90	0.15
30	15.65	11.20	13.50	
34	15.65	12.80	15.10	
40	19.65	15.20	17.50	
50	25.85	19.20	21.50	
60	29.85	23.20	25.50	
64	31.85	24.80	27.10	
80	37.85	31.20	33.50	
100	45.85	39.20	41.50	
120	53.85	47.20	49.50	
140	61.85	55.20	57.50	



Order Information:

L-KLS1-B1608-272 M XX-T3RB-GF1

- L:RoHS
- Board To Board
- Pitch-0.80mm
- Height-2.72mm
- Type:M-Male
- XX-No. Of Contact
- T3=SMD With Post
- T=SMD Without Post, Packing:R=Reel
- Color:B-Black W-Natural
- Plating:
 - GF1-1u "Half Gold Tin
 - G1=1u" Gold
 - GF10-10u" Half Gold Tin
 - Sn=Sn Gold

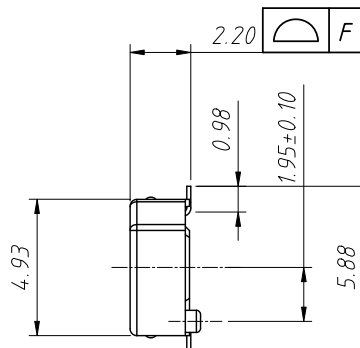
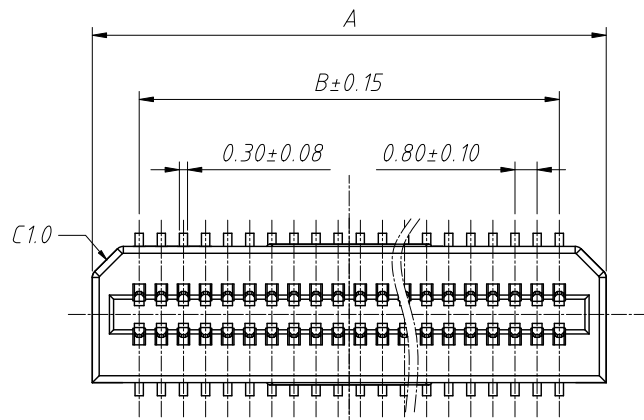


Recommended PCB Layout General Tolerance ±0.05

ANGLE TOLERANCE	PROJECTION	Description:	0.8mm Board To Board Plug
±3°			
GENERAL TOLERANCE	UNITS	mm	L-KLS1-B1608-272MXX-T3RB-GF1
x.x ±0.30	SHEET SIZE	A4	
x.xx ±0.20	Draw:	Jenny	NingBo KLS ELECTRONIC CO.,L TD.
x.xxx ±0.10	Check:	Daniel	

1 RoHS Compliance

REV	SYM	Revision Record	Appr.	Date
V0	KLS01629	New Version Release	Jenny	2024-07-10

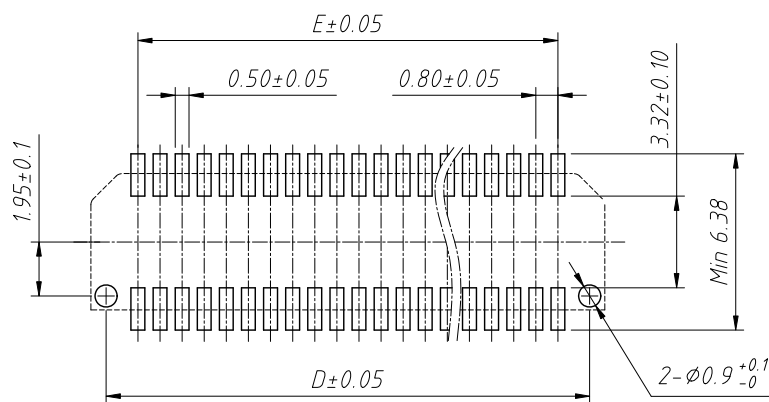
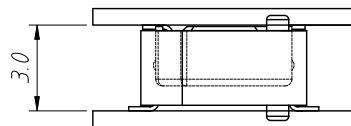
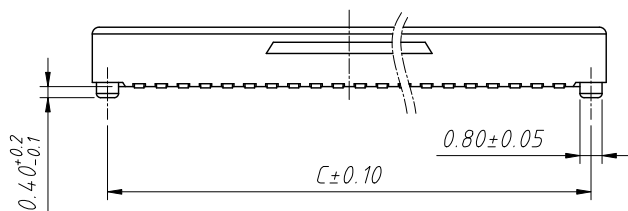


Material:
 Insulator: High Temperature, UL 94 V-0
 Terminal: Phosphor Bronze, Gold plating

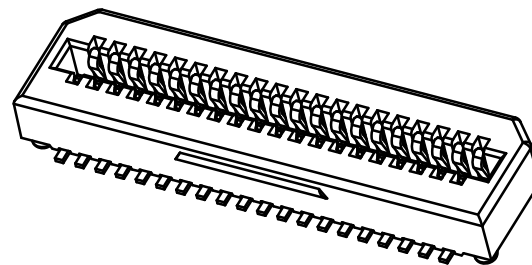
Electrical:
 Rated Voltage: 60V AC/DC
 Rated Current: 0.5 AMPS
 Dielectric Withstanding: 250V AC
 Insulation resistance: 1000mΩ min
 Contact resistance: 60mΩ max

Mechanical Performance Requirements
 Insertion force: Maximum 57.46N
 Output: Minimum 8.50N
 Operating Temperature: -55°C ~ +85°C

Pins	Dimensions (mm)			
	A	B	C	D
12	7.40	4.00	6.30	0.10
14	8.20	4.80	7.10	
16	9.00	5.60	7.90	
20	10.60	7.20	9.50	
22	11.40	8.00	10.30	
24	12.20	8.80	11.10	
26	13.00	9.60	11.90	0.15
30	14.60	11.20	13.50	
34	16.20	12.80	15.10	
40	18.60	15.20	17.50	
50	22.60	19.20	21.50	
60	26.60	23.20	25.50	
64	28.20	24.80	27.10	
80	34.60	31.20	33.50	
100	42.60	39.20	41.50	
120	50.60	47.20	49.50	
140	58.60	55.20	57.50	



Recommended PCB Layout General Tolerance ±0.05



Order Information:

L-KLS1-B1608-220 F XX-T3RB-GF1

- L: RoHS
- Board To Board
- Pitch-0.80mm
- Height-2.20mm
- Type:F-Female
- XX-No. Of Contact
- T3=SMD With Post
- T=SMD Without Post, Packing: R=Reel
- Color: B-Black W-Natural
- Plating:
- GF1-1u "Half Gold Tin G1=1u"Gold
- GF10-10u" Half Gold Tin Sn=Sn Gold

ANGLE TOLERANCE	PROJECTION	Description:	0.8mm Board To Board Socket	
±3°				
GENERAL TOLERANCE	UNITS	mm	KLS P/N:	L-KLS1-B1608-220FXX-T3RB-GF1
x.x ±0.30	SHEET SIZE	A4		
x.xx ±0.20	Draw:	Jenny	2024-07-10	
x.xxx ±0.10	Check:	Daniel	2024-07-10	

NingBo KLS ELECTRONIC CO.,LTD.