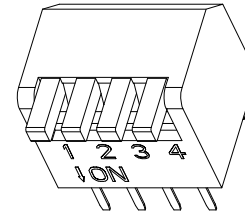
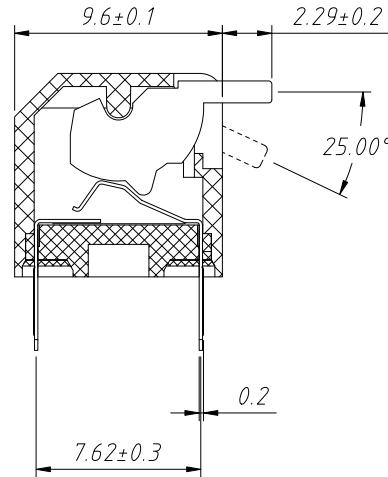
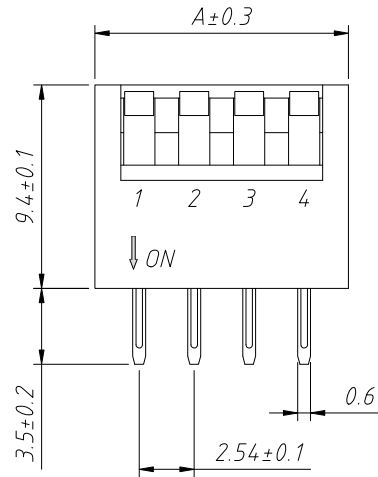


1 RoHS Compliance

REV	SYM	Revision Record	Appr.	Date
V0	KLS07018	New Version Release	Jenny	2024-05-20



Switch Factory  
In disconnected state

**Material:**

Toggle handle:PBT,UL 94-V0,White

Switch Cover:PBT,UL 94-V0,Red/Blue/Black

Static spring plate:Phosphorus copper, 3u"Half gold tin

Moving spring leaf:Phosphorus copper, 3u"Half gold tin

Switch holder:PBT,UL 94-V0,Black

Potting glue:Epoxy Tree Fingers

**Electrical Characteristics:**

**Switch Capacity:**

When switching:25mA at 24VDC

Non-switching time:100mA at 50VDC

**Contact resistance:**

Initial value:50mΩ Max.

Final life value:100mΩ Max.

Insulation resistance:100MΩ Min at 500VDC

Insulation strength:500VAC 50Hz/1min

Interelectrode capacitance: (5pf, 1MHz±10kHz)

Operating force:1000gf Max.

Electrical Life:2000 Cycles <100mΩ@20Cycles min

25mA 24VDC

Dielectric Withstanding Voltage: 500 VAC R.M.S.

Temperature range: -40°C To +85°C

**Welding requirements:**

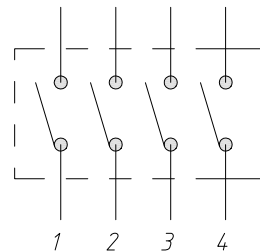
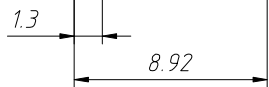
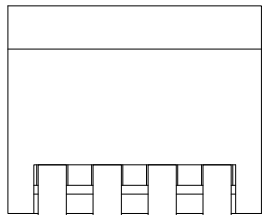
Manual welding :320°C no more than 2 seconds.

(30 W soldering iron max.)

Wave soldering :260°C for no more than 5 seconds,

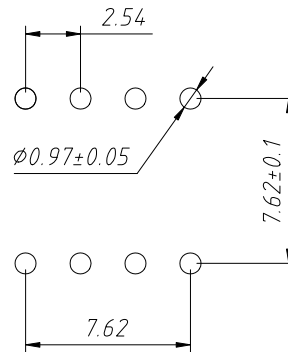
The switch is off during welding and cleaning

D



Circuit Diagram

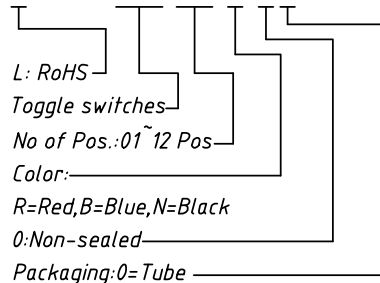
Model No.	No.Pos.	A
DPT-01	01	3.54
DPT-02	02	6.64
DPT-03	03	9.18
DPT-04	04	11.72
DPT-05	05	14.26
DPT-06	06	16.80
DPT-07	07	19.34
DPT-08	08	21.88
DPT-09	09	24.42
DPT-10	10	26.96
DPT-12	12	32.04



PCB Layout

**Order Information:**

L-KLS7-DPT-XX-X-0 0



L: RoHS

Toggle switches

No of Pos.:01~12 Pos

Color:

R=Red,B=Blue,N=Black

0:Non-sealed

Packaging:0=Tube

ANGLE TOLERANCE	PROJECTION	Description:
±3°		Toggle switches
GENERAL TOLERANCE	UNITS	mm
x.x ±0.30	SHEET SIZE	A4
x.xx ±0.20	Draw:	Jenny 2024-05-20
x.xxx ±0.10	Check:	Daniel 2024-05-20



NingBo KLS ELECTRONIC CO.,L TD.

H