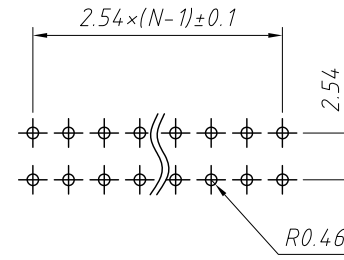
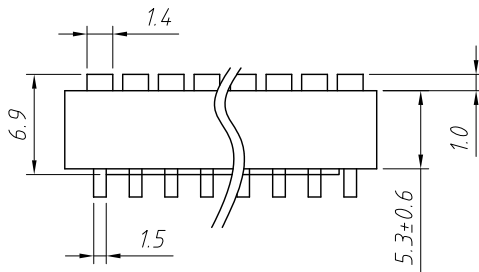
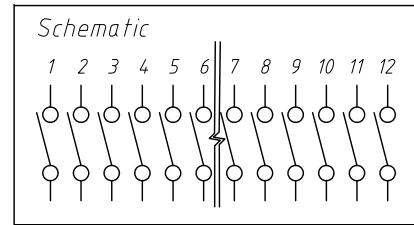
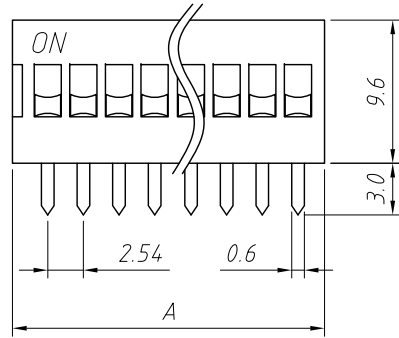
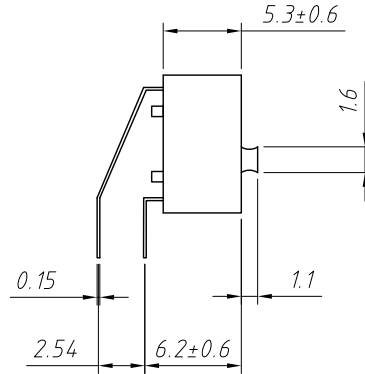


Switching Characteristics:
Mechanical life: 2000 operations per switch
Operation Force : ≤9.8N max.
Stroke: 2.0mm
Operation Temp: -20°C ~ +70°C
Electrical life: 2000 operations per switch-24 VDC 25mA
Contact Resistance: 50m max. at initial
Non-Switching Rating: 100mA, 50VDC
Switching Rating: 25mA, 24VDC
Circuit: Single pole single throw
Contact: Half Gold/Sn

| Model No. | No.Pos. | A |
|-----------|---------|-------|
| DAT-01 | 1 | 4.10 |
| DAT-02 | 2 | 6.64 |
| DAT-03 | 3 | 9.18 |
| DAT-04 | 4 | 11.72 |
| DAT-05 | 5 | 14.26 |
| DAT-06 | 6 | 16.80 |
| DAT-07 | 7 | 19.34 |
| DAT-08 | 8 | 21.88 |
| DAT-09 | 9 | 24.42 |
| DAT-10 | 10 | 26.96 |
| DAT-12 | 12 | 32.04 |



PCB Layout



Order Information

L-KLS7-DAT-XX-X-X-X

- Packaging: 0=Tube 1=Tape
- 0:Non-sealed 1:With sealed
- Color:R=Red,B=Blue,N=Black
- Number of Pos.: 01~12 Pos.
- Bulge Type Dip Switch
- RoHS

Soldering and Cleaning Processes

Keep all switch contacts in their "OFF" position for all operations

| GENERAL TOLERANCE | PROJECTION | | Description: |
|-------------------|------------|------------|---------------------------------|
| X. ±0.50 | UNITS | mm | SPST Standard Right angle Type |
| .X ±0.25 | SCALE | 1:1 | |
| .XX ±0.10 | Draw by: | Jenny | |
| ANGLE TOLERANCE | Check by: | | KLS P/N: L-KLS7-DAT |
| X. ±5° | Date | 2018-03-01 | NingBo KLS ELECTRONIC CO.,L TD. |
| .X ±3° | SHEET | 1 OF 1 | |
| .XX ±2° | | | |