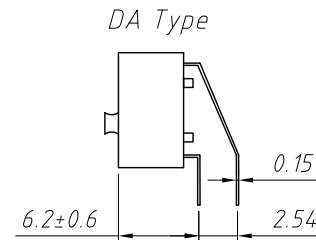
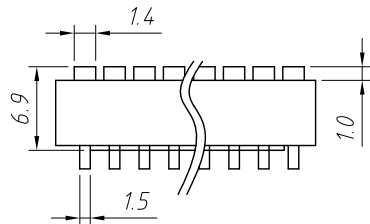


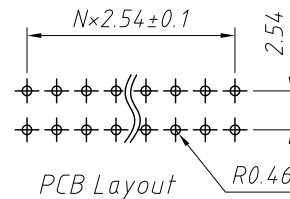
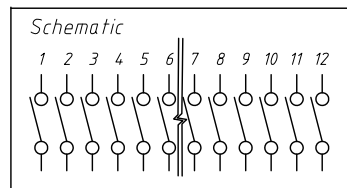
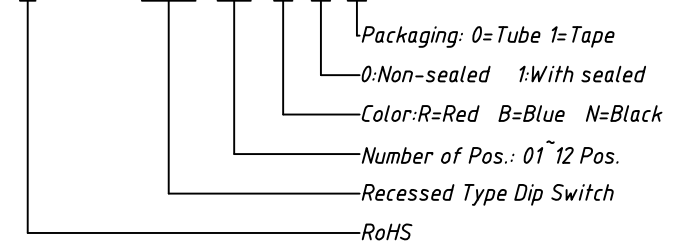
Model No.	No.Pos.	A
DAR-01	1	4.10
DAR-02	2	6.64
DAR-03	3	9.18
DAR-04	4	11.72
DAR-05	5	14.26
DAR-06	6	16.80
DAR-07	7	19.34
DAR-08	8	21.88
DAR-09	9	24.42
DAR-10	10	26.96
DAR-12	12	32.04

Switching Characteristics:
 Mechanical life: 2000 operations per switch
 Operation Force : ≤9.8N max.
 Stroke: 2.0mm
 Operation Temp: -20°C ~ +70°C
 Electrical life: 2000 operations per switch-24 VDC 25mA
 Contact Resistance: 50m max. at initial
 Non-Switching Rating: 100mA, 50VDC
 Switching Rating: 25mA, 24VDC
 Circuit: Single pole single throw



Order Information

L-KLS7-DAR-XX-X-X-X



Soldering and Cleaning Processes

Keep all switch contacts in their "OFF" position for all operations

GENERAL TOLERANCE	PROJECTION		Description:
X. ±0.50	UNITS	mm	SPST Standard Right angle Type Recessed
.X ±0.25	SCALE	1:1	
.XX ±0.10	Draw by:	Jenny	
ANGLE TOLERANCE	Check by:		KLS P/N: L-KLS7-DAR
X. ±5°	Date	2018-03-01	NingBo KLS ELECTRONIC CO.,L TD.
.X ±3°	SHEET	1 OF 1	
.XX ±2°			