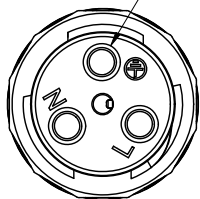


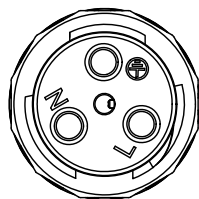
1 RoHS Compliance

REV	SYM	Revision Record	Appr.	Date
V0	KLS33029	New Version Release	Jenny	2024-06-15

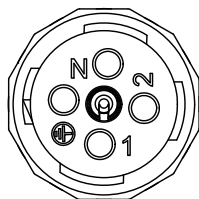
Earth Wier Pin No Copper



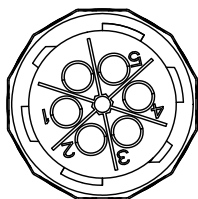
2Pin Connector



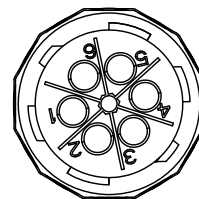
3Pin Connector



4Pin Connector



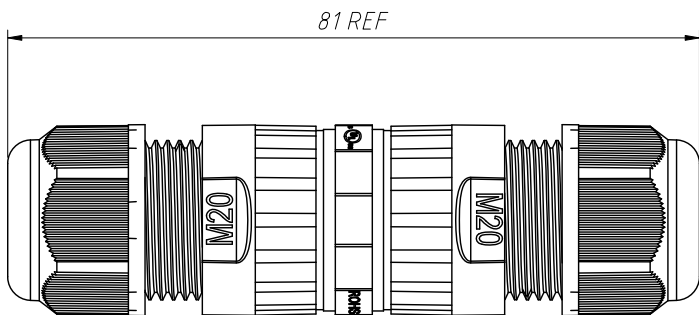
5Pin Connector



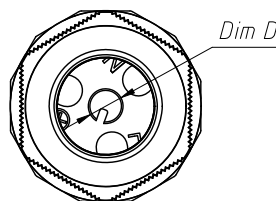
6Pin Connector

Material:
 Housing: PA66, UL 94 V-0, Black
 Contact: Copper Alloy, Nickel plated
 IP rating: IP68
 Number of poles: 2P/3P/4P/5P/6P

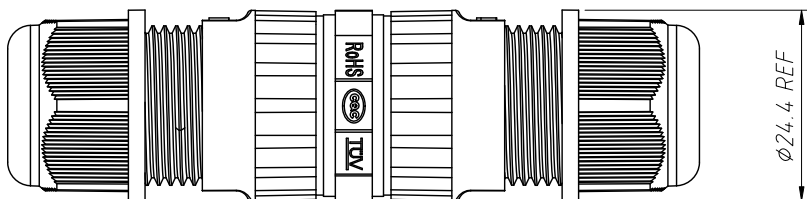
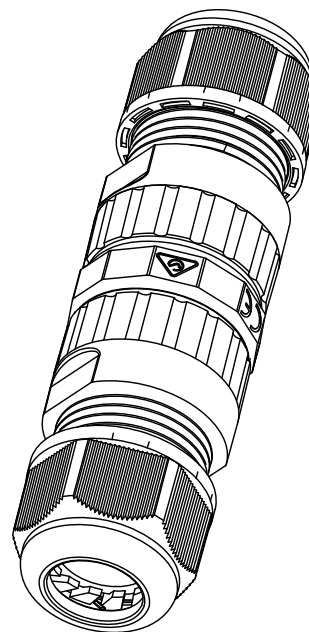
Electrical:
 Rated current: 2P/3P/4P: 24A
 5P/6P: 16A
 Rated voltage: AC 400V
 Withstand voltage: AC 2500V
 Wire section: 2P/3P/4P: 0.5~2.5mm²
 5P/6P: 0.5~1.5mm²
 Operating temperature: -40°C~+105°C
 Certification: UL/CQC/RoHS/CE/TUV/SAA



81 REF



Dim D



24.4 REF

Order Information:
 L-KLS15-WEC03-M20-XX-X

L: RoHS
 Waterproof connectors
 Serial Number
 M20 Waterproof
 Circular Connectors
 Number of poles
 Line diameter range: A-3~5mm
 B-3.5~7mm C-5~9mm D-9~12mm

1	2
11.5mm	9-12mm
8.5mm	5-9mm
6.5mm	3.5-7mm
5mm	3-5mm
Rubbers Diameter D	Outer Cable Diameter

ANGLE TOLERANCE	PROJECTION	Description:	M20 Waterproof Circular Connectors, IP68, Screw Locking Type
±3°			
GENERAL TOLERANCE	UNITS	mm	KLS P/N: L-KLS15-WEC03-M20-XX-X
x. ±0.35	SHEET SIZE	A4	
x.x ±0.20	Draw:	Jenny	2024-06-15
x.xx ±0.10	Check:	Daniel	2024-06-15



NingBo KLS ELECTRONIC CO.,L TD.