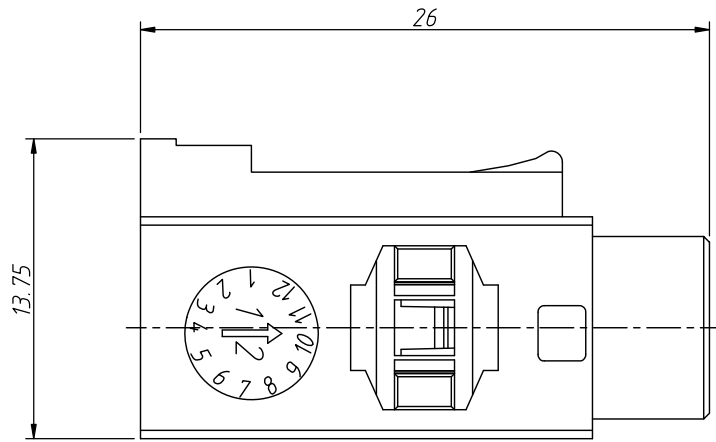
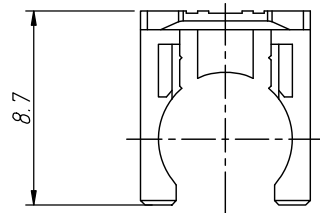
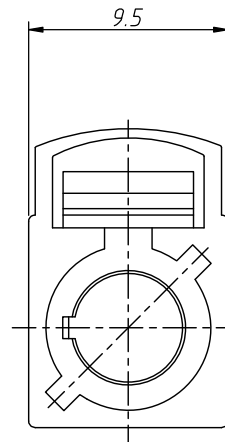


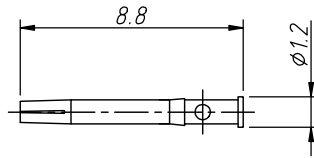
1  
RoHS Compliance



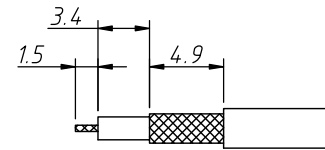
Plastic Shell



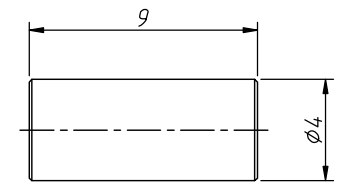
Snap Ring



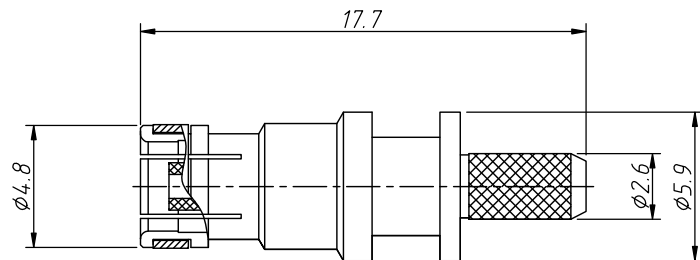
Pin Contact



Cable Stripping Size



Copper Tube



Body

ANGLE TOLERANCE	PROJECTION	Description:		
$\pm 3^\circ$		FAKRA Crimp Plug Connector		
GENERAL TOLERANCE	UNITS	mm	KLS P/N:	L-KLS1-FAKRA41-X-XXXX-1-X
x.x $\pm 0.30$	SHEET SIZE	A4	1 Of 2	NingBo KLS ELECTRONIC CO.,L TD.
x.xx $\pm 0.20$	Draw:	Daniel	2024-06-06	
x.xxx $\pm 0.03$	Check:	Daniel	2024-06-06	

1  
RoHS Compliance

Card slot direction	Code	Color	RAL	Order Information
	A	Black	sim.9005	FAKRA41-A-9005-1-G
	B	White	sim.9001	FAKRA41-A-9001-1-G
	C	Blue	sim.5005	FAKRA41-A-5005-1-G
	D	Bordeaux Violet	sim.4004	FAKRA41-A-4004-1-G
	E	Green	sim.6002	FAKRA41-A-6002-1-G
	F	Brown	sim.8011	FAKRA41-A-8011-1-G
	G	Grey	sim.7031	FAKRA41-A-7031-1-G
	H	Violet	sim.4003	FAKRA41-A-4003-1-G
	I	Beige	sim.1001	FAKRA41-A-1001-1-G
	K	Curry	sim.1027	FAKRA41-A-1027-1-G
	L	Carmine Red	sim.3002	FAKRA41-A-3002-1-G
	M	Pastel orange	sim.2003	FAKRA41-A-2003-1-G
	N	Pastel Green	sim.6019	FAKRA41-A-6019-1-G
	Z	Water Blue	sim.5021	FAKRA41-A-5021-1-G

Material:

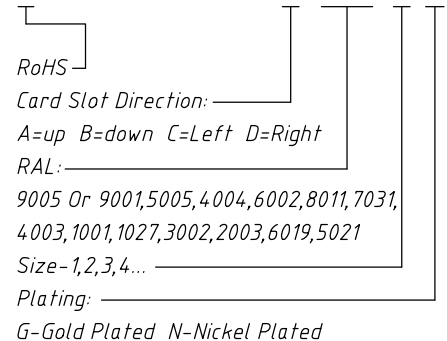
Housing:PA66+30%GF  
 Snap Ring:PA66+30%GF  
 Snap Ring:Beryllium Copper  
 Copper Tube:Brass,Nickel Plating  
 Insulator:PTFE  
 Pin Contact:Beryllium Copper,Gold Plating  
 Body:Brass,Nickel Plating

Electrical:

Frequency Range:DC ~ 4 GHz  
 Nominal Impedance:50 ohms  
 VSWR:<1.3  
 Withstanding Voltage:335 V  
 Insulator Resistance:1000 MΩ  
 Contact Resistance:6 Milliohms Max(Center Contact)  
 1 Milliohms Max(Outer Contact)  
 Operating Temperature:-40°C ~ +85°C  
 Environmental:Lead Free, RoHS compliant

Order Information

L-KLS1-FAKRA41-A-9005-1-G



ANGLE TOLERANCE	PROJECTION	Description:		
±3°		FAKRA Crimp Plug Connector		
GENERAL TOLERANCE	UNITS	mm	KLS P/N:	L-KLS1-FAKRA41-X-XXXX-1-X
x.x ±0.30	SHEET SIZE	A4	2 Of 2	
x.xx ±0.20	Draw:	Daniel	2024-06-06	
x.xxx ±0.03	Check:	Daniel	2024-06-06	

**KLS** NingBo KLS ELECTRONIC CO.,L TD.