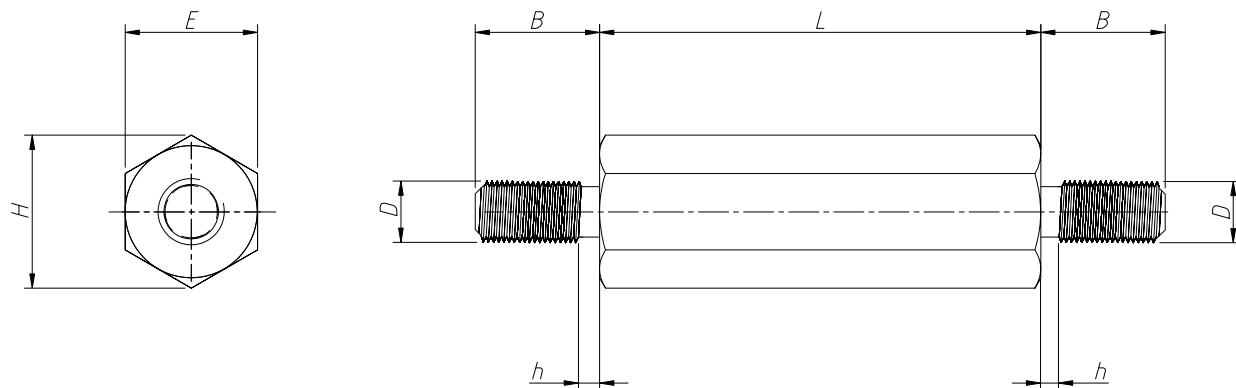


1  
RoHS Compliance

REV	SYM	Revision Record	Appr.	Date
V0	KLS08063	New Version Release	Song	2024-05-28



Order Information:

L-KLS8-DBM-M2- EX-LX+B-(A)

L: RoHS

Series NO.

Screw D:M2,M2.5

M3,M4,M5,M6

Size E:Standard):3.0~8.0

Unstandard:4.0~10.0

Length:5-60mm

Thread Length:5.0mm

Plated Code:

Blank:No Plated A:Ni Plated

ITEM	D	E(standard)	E(Unstandard)	H(standard)	L	B	h	Plated:-(A)
L-KLS8-DBM-M2-EX-LX-(A)	M2	E3.0	E4.0	3.4	5-60mm	5.0	≤1.0	Blank:No Plated  -A:Ni Plated
L-KLS8-DBM-M2-EX-LX+B-(A)	M2	E3.0	E4.0	3.4	5-60mm	5.0		
L-KLS8-DBM-M2.5-EX-LX-(A)	M2.5	E4.7	E5.0/E6.0	5.3	5-60mm	5.0		
L-KLS8-DBM-M2.5-EX-LX+B-(A)	M2.5	E4.7	E5.0/E6.0	5.3	5-60mm	5.0		
L-KLS8-DBM-M3-EX-LX-(A)	M3	E4.7	E5.0	5.3	5-60mm	5.0		
L-KLS8-DBM-M3-EX-LX+B-(A)	M3	E4.7	E5.0	5.3	5-60mm	5.0		
L-KLS8-DBM-M4-EX-LX-(A)	M4	E5.5/E6.0	E7.0	6.2/6.8	5-60mm	5.0		
L-KLS8-DBM-M4-EX-LX+B-(A)	M4	E5.5/E6.0	E7.0	6.2/6.8	5-60mm	5.0		
L-KLS8-DBM-M5-EX-LX-(A)	M5	E7.0	E8.0	7.9	5-60mm	5.0		
L-KLS8-DBM-M5-EX-LX+B-(A)	M5	E7.0	E8.0	7.9	5-60mm	5.0		
L-KLS8-DBM-M6-EX-LX-(A)	M6	E8.0	E10.0	9.0	5-60mm	5.0		
L-KLS8-DBM-M6-EX-LX+B-(A)	M6	E8.0	E10.0	9.0	5-60mm	5.0		

Notes:

1.Materials:Brass H59,

No Plated Or Ni Plated

2.All Unmarked Chamfers are C0.2 Max

3.All Unmarked Tolerances are GB/T1804-m

ANGLE TOLERANCE	PROJECTION	Description:	Brass Hexagonal Spacer	
±3°				
GENERAL TOLERANCE	UNITS	mm	KLS P/N:	L-KLS8-DBM
.x ±0.30	SHEET SIZE	A4		
.xx ±0.20	Draw:	Song	2024-05-28	NingBo KLS ELECTRONIC CO.,L TD.
.xxx ±0.10	Check:	Daniel	2024-05-28	