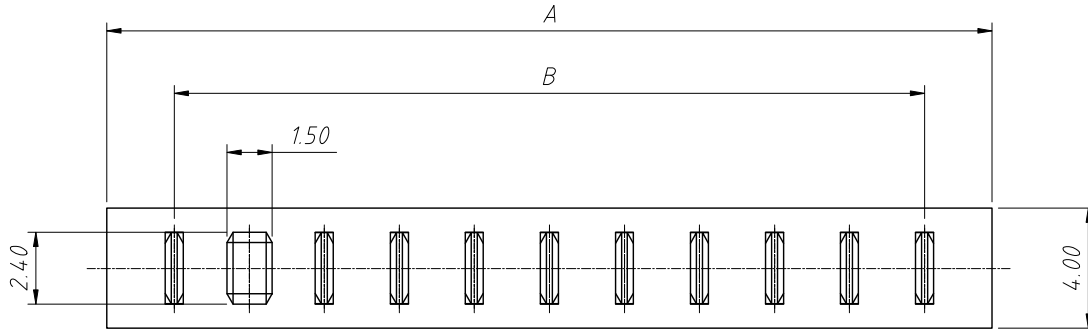


1 RoHS Compliance

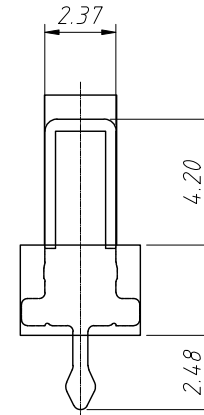
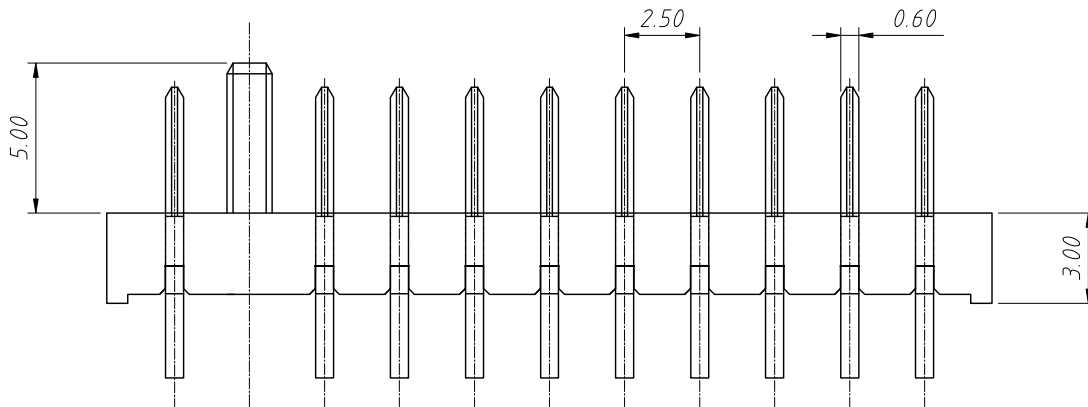
REV	SYM	Revision Record	Appr.	Date
V0	KLS05084	New Version Release	Jenny	2024-07-03



Material:  
Housing:PA9T,UL94V-0  
Terminal:C2680

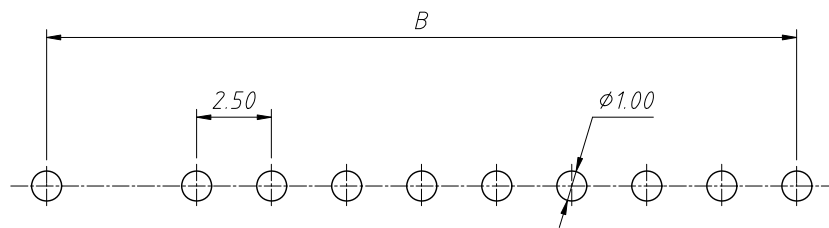
Finish:  
Terminal:Nickel 50u"Min Under Plated  
Overall,Au Plated On The Contact Area or Tin  
On The Soldering Area.

Electrical Characteristics:  
Current rating:5A  
Voltage rating:30V AC  
Contact resistance:30mΩ Max  
Insulation resistance:100MΩ Min  
Dielectric Withstanding Voltage:500VAC  
Operating Temperature:-40°C ~ +105°C



No. of Pins	Dimension	
	DIM.B	DIM.A
03	7.50	12.00
04	10.00	14.50
05	12.50	17.00
06	15.00	19.50
07	17.50	22.00
08	20.00	24.50
09	22.50	27.00
10	25.00	29.50
12	27.50	32.00

Order Information:  
L-KLS1-LBC04-12P-T1  
L: RoHS  
Laptop battery connectors series  
No. of 3~12 Pins  
Terminal width: T1=4.2mm

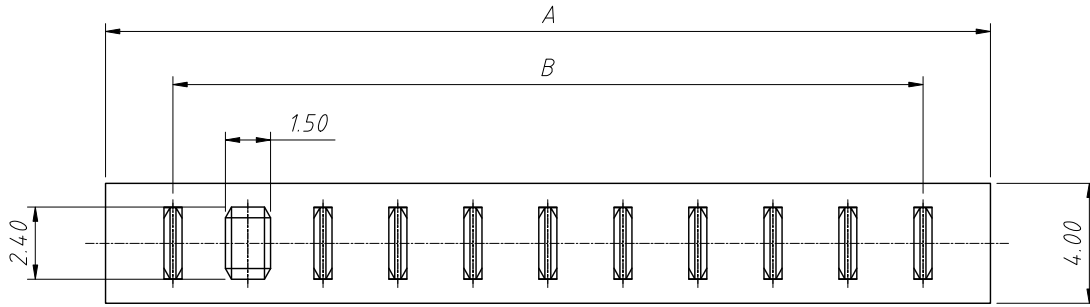


Recommended PCB Layout  
PCB Tolerance=±0.05mm

ANGLE TOLERANCE	PROJECTION	Description:		
±3°		Battery 180° 2.5mm Pitches Male Connector		
GENERAL TOLERANCE	UNITS	mm	KLS P/N:	L-KLS1-LBC04-12P-T1
x.x ±0.30	SHEET SIZE	A4		
x.xx ±0.20	Draw:	Jenny	2024-07-03	NingBo KLS ELECTRONIC CO.,L.TD.
x.xxx ±0.10	Check:	Daniel	2024-07-03	

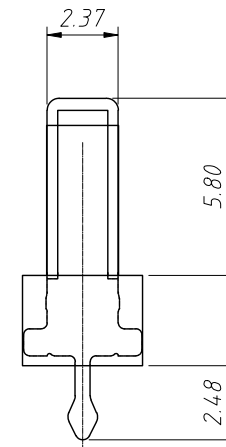
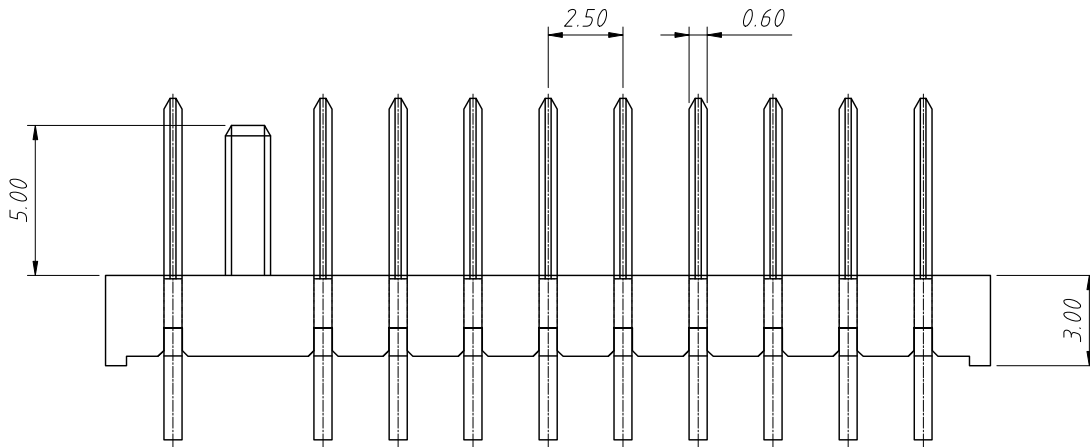
RoHS Compliance

REV	SYM	Revision Record	Appr.	Date
V0	KLS05084	New Version Release	Jenny	2024-07-03



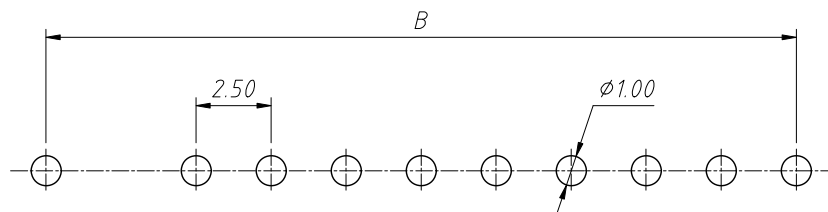
Material:  
 Housing: PA9T, UL94V-0  
 Terminal: Phosphor Bronze  
 Terminal Plated: Gold over Nickel or Tin

Electrical Characteristics:  
 Current rating: 7A  
 Instant Current: 10A  
 Contact resistance: 30mΩ Max  
 Insulation resistance: 100MΩ Min  
 Dielectric Withstanding Voltage: 500VAC  
 Operating Temperature: -40°C ~ +105°C



Order Information:  
**L-KLS1-LBC04-12P-T2**  
 L: RoHS  
 Laptop battery connectors series  
 No. of 3 ~ 12 Pins  
 Terminal width: T2=5.8mm

No. of Pins	Dimension	
	DIM.B	DIM.A
03	7.50	12.00
04	10.00	14.50
05	12.50	17.00
06	15.00	19.50
07	17.50	22.00
08	20.00	24.50
09	22.50	27.00
10	25.00	29.50
12	27.50	32.00



Recommended PCB Layout  
 PCB Tolerance = ±0.05mm

ANGLE TOLERANCE	PROJECTION	Description:
±3°		Battery 180° 2.5mm Pitches Male Connector
GENERAL TOLERANCE	UNITS	mm
x.x ±0.30	SHEET SIZE	A4
x.xx ±0.20	Draw:	Jenny 2024-07-03
x.xxx ±0.10	Check:	Daniel 2024-07-03
KLS P/N:		L-KLS1-LBC04-12P-T2

