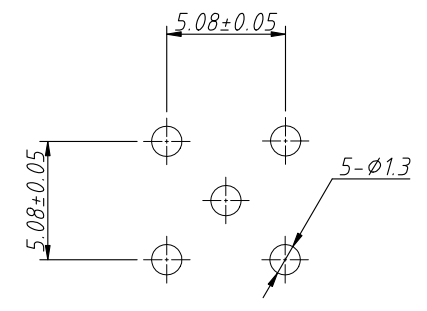
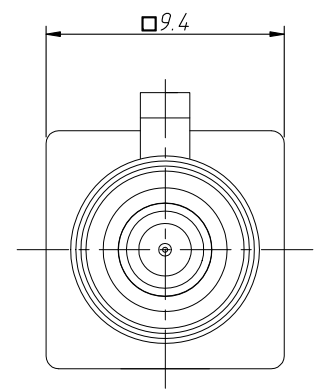
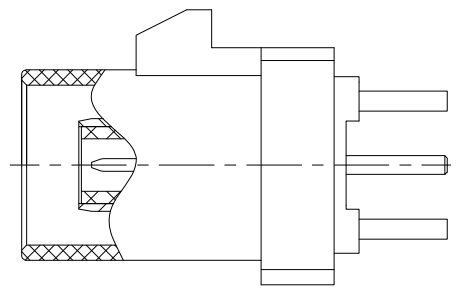
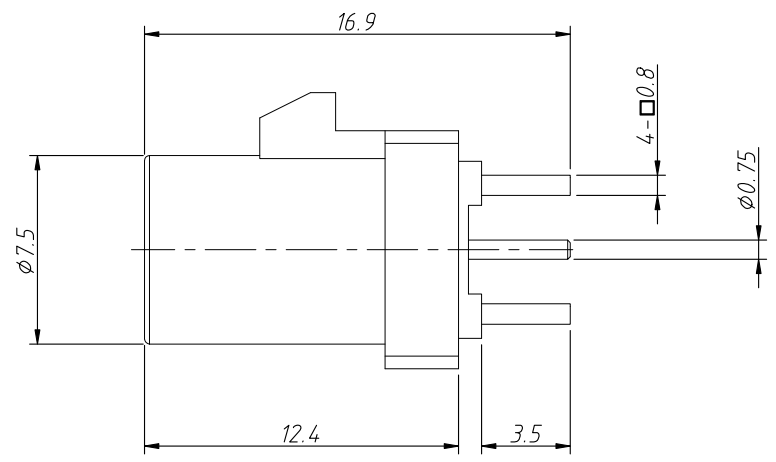
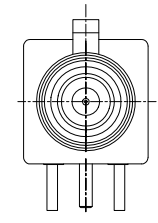


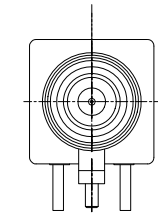
1  
RoHS Compliance



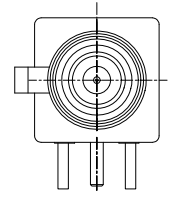
Recommended PCB Layout  
Tolerance: ±0.05mm



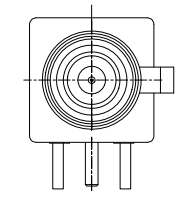
A=up



B=down



C=Left



D=Right

|                   |       |            |        |                                |                                 |
|-------------------|-------|------------|--------|--------------------------------|---------------------------------|
| ANGLE TOLERANCE   |       | PROJECTION |        | Description:                   |                                 |
| ±3°               |       |            |        | Straight Plug FAKRA Connectors |                                 |
| GENERAL TOLERANCE |       | UNITS      | mm     | KLS P/N:                       | L-KLS1-FAKRA07-X-XXXX-1-X       |
| x.x               | ±0.30 | SHEET SIZE | A4     | XX                             | NingBo KLS ELECTRONIC CO.,L TD. |
| x.xx              | ±0.20 | Draw:      | Daniel | 2023-05-04                     |                                 |
| x.xxx             | ±0.10 | Check:     | Daniel | 2023-05-04                     |                                 |

1  
RoHS Compliance

| Card slot direction | Code | Color           | RAL      | Order Information  |
|---------------------|------|-----------------|----------|--------------------|
|                     | A    | Black           | sim.9005 | FAKRA07-A-9005-1-G |
|                     | B    | White           | sim.9001 | FAKRA07-A-9001-1-G |
|                     | C    | Blue            | sim.5005 | FAKRA07-A-5005-1-G |
|                     | D    | Bordeaux Violet | sim.4004 | FAKRA07-A-4004-1-G |
|                     | E    | Green           | sim.6002 | FAKRA07-A-6002-1-G |
|                     | F    | Brown           | sim.8011 | FAKRA07-A-8011-1-G |
|                     | G    | Grey            | sim.7031 | FAKRA07-A-7031-1-G |
|                     | H    | Violet          | sim.4003 | FAKRA07-A-4003-1-G |
|                     | I    | Beige           | sim.1001 | FAKRA07-A-1001-1-G |
|                     | K    | Curry           | sim.1027 | FAKRA07-A-1027-1-G |
|                     | L    | Carmine Red     | sim.3002 | FAKRA07-A-3002-1-G |
|                     | M    | Pastel orange   | sim.2003 | FAKRA07-A-2003-1-G |
|                     | N    | Pastel Green    | sim.6019 | FAKRA07-A-6019-1-G |
|                     | Z    | Water Blue      | sim.5021 | FAKRA07-A-5021-1-G |

Material:  
 Housing:PA66+30%GF  
 Insulator:PTFE  
 Pin Contact:Brass,Gold Plating  
 Body:Brass,Gold Plating

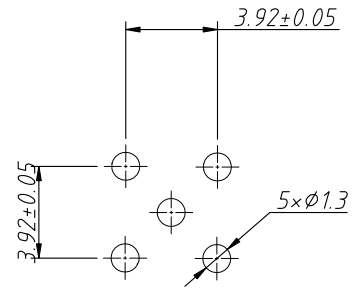
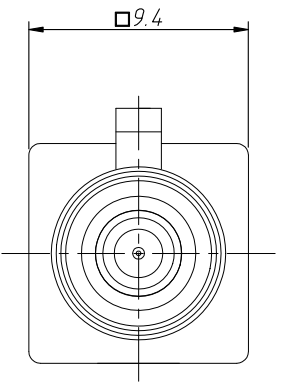
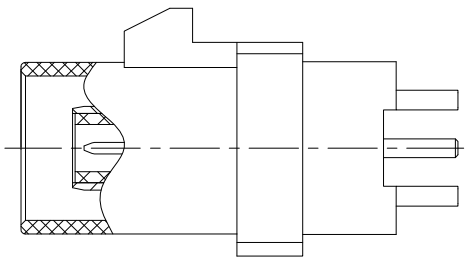
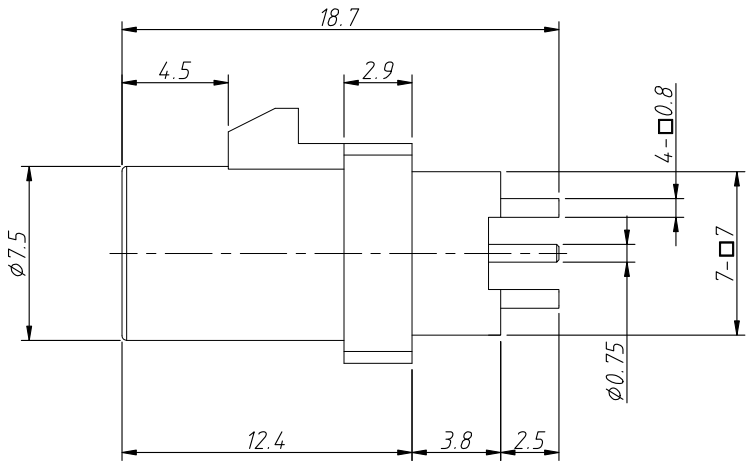
Electrical:  
 Frequency Range:DC ~ 4 GHz  
 Nominal Impedance:50 ohms  
 VSWR:<1.3  
 Withstanding Voltage:335 V  
 Insulator Resistance:1000 MΩ  
 Contact Resistance:6 Milliohms Max(Center Contact)  
 1 Milliohms Max(Outer Contact)  
 Operating Temperature:-40°C ~ +85°C  
 Environmental:Lead Free, RoHS compliant

Order Information  
 L-KLS1-FAKRA07-A-9005-1-G

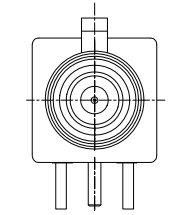
RoHS  
 Card Slot Direction: \_\_\_\_\_  
 A=up B=down C=Left D=Right  
 RAL: \_\_\_\_\_  
 9005 Or 9001,5005,4004,6002,8011,7031,  
 4003,1001,1027,3002,2003,6019,5021  
 Size-1 \_\_\_\_\_  
 Plating: \_\_\_\_\_  
 G-Gold Plated N-Nickel Plated

|                   |            |              |                                |                                 |
|-------------------|------------|--------------|--------------------------------|---------------------------------|
| ANGLE TOLERANCE   | PROJECTION | Description: | Straight Plug FAKRA Connectors |                                 |
| ±3°               |            |              |                                |                                 |
| GENERAL TOLERANCE | UNITS      | mm           | KLS P/N:                       | L-KLS1-FAKRA07-X-XXXX-1-X       |
| x.x ±0.30         | SHEET SIZE | A4           | 2 Of 2                         | NingBo KLS ELECTRONIC CO.,L TD. |
| x.xx ±0.20        | Draw:      | Daniel       | 2023-07-12                     |                                 |
| x.xxx ±0.03       | Check:     | Daniel       | 2023-07-12                     |                                 |

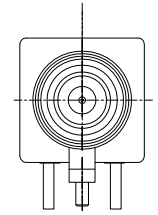
1  
RoHS Compliance



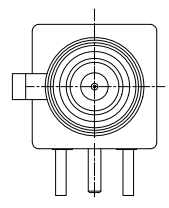
Recommended PCB Layout  
Tolerance: ±0.05mm



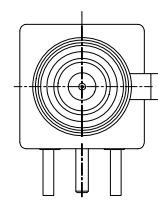
A=up



B=down



C=Left



D=Right

|                   |       |            |        |                                |                                 |
|-------------------|-------|------------|--------|--------------------------------|---------------------------------|
| ANGLE TOLERANCE   |       | PROJECTION |        | Description:                   |                                 |
| ±3°               |       |            |        | Straight Plug FAKRA Connectors |                                 |
| GENERAL TOLERANCE |       | UNITS      | mm     | KLS P/N:                       | L-KLS1-FAKRA07-X-XXXX-2-X       |
| x.x               | ±0.30 | SHEET SIZE | A4     | XX                             | NingBo KLS ELECTRONIC CO.,L TD. |
| x.xx              | ±0.20 | Draw:      | Daniel | 2023-05-04                     |                                 |
| x.xxx             | ±0.10 | Check:     | Daniel | 2023-05-04                     |                                 |

1  
RoHS Compliance

| Card slot direction | Code | Color           | RAL      | Order Information  |
|---------------------|------|-----------------|----------|--------------------|
|                     | A    | Black           | sim.9005 | FAKRA07-A-9005-2-G |
|                     | B    | White           | sim.9001 | FAKRA07-A-9001-2-G |
|                     | C    | Blue            | sim.5005 | FAKRA07-A-5005-2-G |
|                     | D    | Bordeaux Violet | sim.4004 | FAKRA07-A-4004-2-G |
|                     | E    | Green           | sim.6002 | FAKRA07-A-6002-2-G |
|                     | F    | Brown           | sim.8011 | FAKRA07-A-8011-2-G |
|                     | G    | Grey            | sim.7031 | FAKRA07-A-7031-2-G |
|                     | H    | Violet          | sim.4003 | FAKRA07-A-4003-2-G |
|                     | I    | Beige           | sim.1001 | FAKRA07-A-1001-2-G |
|                     | K    | Curry           | sim.1027 | FAKRA07-A-1027-2-G |
|                     | L    | Carmine Red     | sim.3002 | FAKRA07-A-3002-2-G |
|                     | M    | Pastel orange   | sim.2003 | FAKRA07-A-2003-2-G |
|                     | N    | Pastel Green    | sim.6019 | FAKRA07-A-6019-2-G |
|                     | Z    | Water Blue      | sim.5021 | FAKRA07-A-5021-2-G |

Material:  
Housing:PA66+30%GF  
Insulator:PTFE  
Pin Contact:Brass,Gold Plating  
Body:Brass,Gold Plating

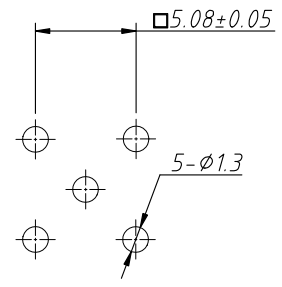
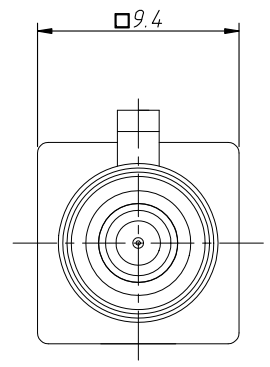
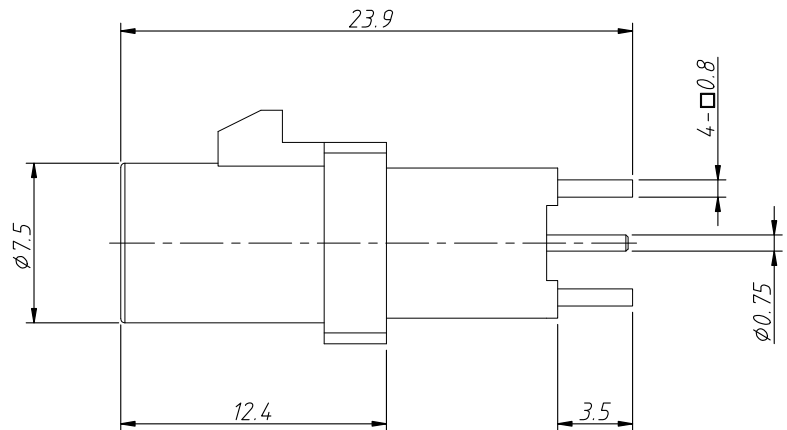
Electrical:  
Frequency Range:DC ~ 4 GHz  
Nominal Impedance:50 ohms  
Withstanding Voltage:335 V  
Insulator Resistance:1000 MΩ  
Contact Resistance:6 Milliohms Max(Center Contact)  
1 Milliohms Max(Outer Contact)  
Operating Temperature:-40°C ~ +85°C  
Environmental:Lead Free, RoHS compliant

Order Information  
L-KLS1-FAKRA07-A-9005-2-G

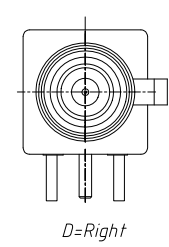
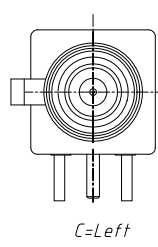
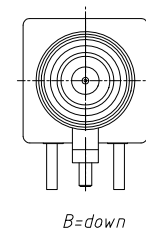
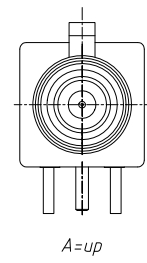
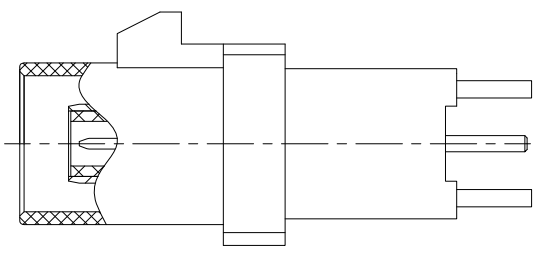
RoHS-  
Card Slot Direction: \_\_\_\_\_  
A=up B=down C=Left D=Right  
RAL: \_\_\_\_\_  
9005 Or 9001,5005,4004,6002,8011,7031,  
4003,1001,1027,3002,2003,6019,5021  
Size-2 \_\_\_\_\_  
Plating: \_\_\_\_\_  
G-Gold Plated N-Nickel Plated

|                   |            |              |                                |                                 |
|-------------------|------------|--------------|--------------------------------|---------------------------------|
| ANGLE TOLERANCE   | PROJECTION | Description: | Straight Plug FAKRA Connectors |                                 |
| ±3°               |            |              |                                |                                 |
| GENERAL TOLERANCE | UNITS      | mm           | KLS P/N:                       | L-KLS1-FAKRA07-X-XXXX-2-X       |
| x.x ±0.30         | SHEET SIZE | A4           | 2 Of 2                         | NingBo KLS ELECTRONIC CO.,L TD. |
| x.xx ±0.20        | Draw:      | Daniel       | 2023-07-12                     |                                 |
| x.xxx ±0.03       | Check:     | Daniel       | 2023-07-12                     |                                 |

1  
RoHS Compliance



*Recommended PCB Layout*  
Tolerance: ±0.05mm



|                   |            |                                |            |                                 |
|-------------------|------------|--------------------------------|------------|---------------------------------|
| ANGLE TOLERANCE   | PROJECTION | Description:                   |            |                                 |
| ±3°               |            | Straight Plug FAKRA Connectors |            |                                 |
| GENERAL TOLERANCE | UNITS      | mm                             | KLS P/N:   | L-KLS1-FAKRA07-X-XXXX-3-X       |
| x.x ±0.30         | SHEET SIZE | A4                             | XX         | NingBo KLS ELECTRONIC CO.,L TD. |
| x.xx ±0.20        | Draw:      | Daniel                         | 2023-05-04 |                                 |
| x.xxx ±0.10       | Check:     | Daniel                         | 2023-05-04 |                                 |

1  
RoHS Compliance

| Card slot direction | Code | Color           | RAL      | Order Information  |
|---------------------|------|-----------------|----------|--------------------|
|                     | A    | Black           | sim.9005 | FAKRA07-A-9005-3-G |
|                     | B    | White           | sim.9001 | FAKRA07-A-9001-3-G |
|                     | C    | Blue            | sim.5005 | FAKRA07-A-5005-3-G |
|                     | D    | Bordeaux Violet | sim.4004 | FAKRA07-A-4004-3-G |
|                     | E    | Green           | sim.6002 | FAKRA07-A-6002-3-G |
|                     | F    | Brown           | sim.8011 | FAKRA07-A-8011-3-G |
|                     | G    | Grey            | sim.7031 | FAKRA07-A-7031-3-G |
|                     | H    | Violet          | sim.4003 | FAKRA07-A-4003-3-G |
|                     | I    | Beige           | sim.1001 | FAKRA07-A-1001-3-G |
|                     | K    | Curry           | sim.1027 | FAKRA07-A-1027-3-G |
|                     | L    | Carmine Red     | sim.3002 | FAKRA07-A-3002-3-G |
|                     | M    | Pastel orange   | sim.2003 | FAKRA07-A-2003-3-G |
|                     | N    | Pastel Green    | sim.6019 | FAKRA07-A-6019-3-G |
|                     | Z    | Water Blue      | sim.5021 | FAKRA07-A-5021-3-G |

Material:  
Housing:PA66+30%GF  
Insulator:PTFE  
Pin Contact:Brass,Gold Plating  
Body:Brass,Gold Plating

Electrical:  
Frequency Range:DC ~ 4 GHz  
Nominal Impedance:50 ohms  
Withstanding Voltage:335 V  
Insulator Resistance:1000 MΩ  
Contact Resistance:6 Milliohms Max(Center Contact)  
1 Milliohms Max(Outer Contact)  
Operating Temperature:-40°C ~ +85°C  
Environmental:Lead Free, RoHS compliant

Order Information  
L-KLS1-FAKRA07-A-9005-3-G

RoHS  
Card Slot Direction: \_\_\_\_\_  
A=up B=down C=Left D=Right  
RAL: \_\_\_\_\_  
9005 Or 9001,5005,4004,6002,8011,7031,  
4003,1001,1027,3002,2003,6019,5021  
Size-3 \_\_\_\_\_  
Plating: \_\_\_\_\_  
G-Gold Plated N-Nickel Plated

|                   |            |              |                                |                                 |
|-------------------|------------|--------------|--------------------------------|---------------------------------|
| ANGLE TOLERANCE   | PROJECTION | Description: | Straight Plug FAKRA Connectors |                                 |
| ±3°               |            |              |                                |                                 |
| GENERAL TOLERANCE | UNITS      | mm           | KLS P/N:                       | L-KLS1-FAKRA07-X-XXXX-3-X       |
| x.x ±0.30         | SHEET SIZE | A4           | 2 Of 2                         | NingBo KLS ELECTRONIC CO.,L TD. |
| x.xx ±0.20        | Draw:      | Daniel       | 2023-07-12                     |                                 |
| x.xxx ±0.03       | Check:     | Daniel       | 2023-07-12                     |                                 |