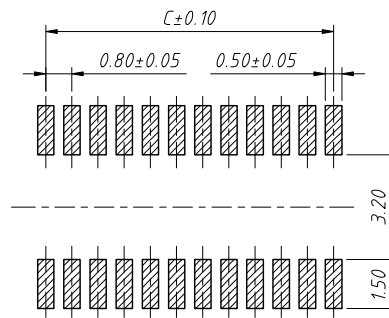
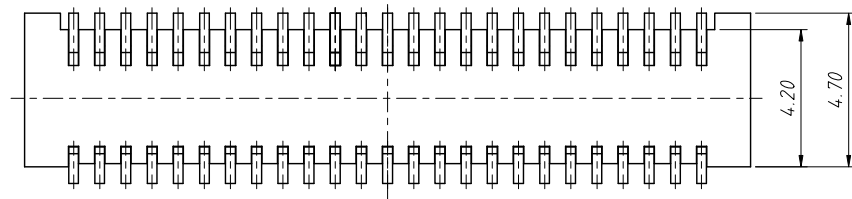
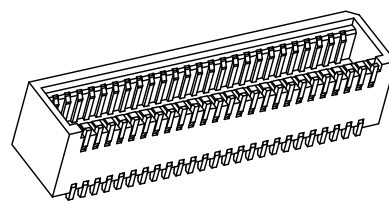
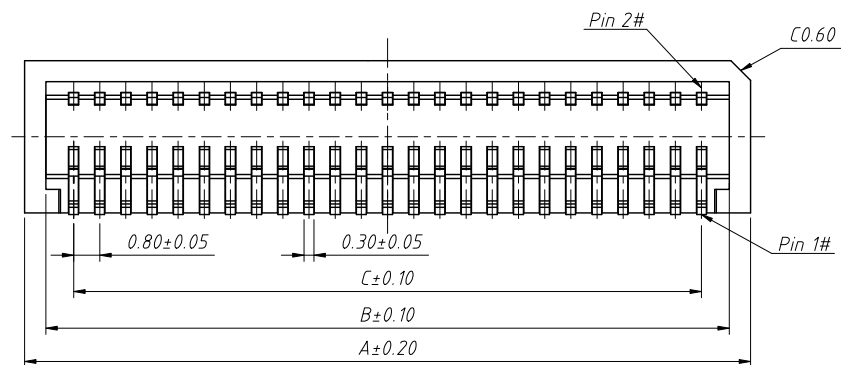
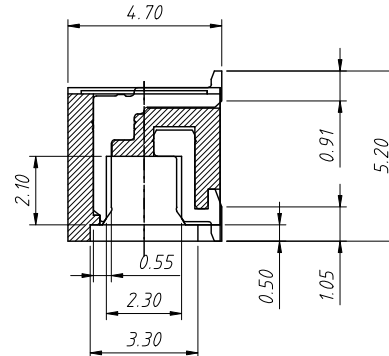
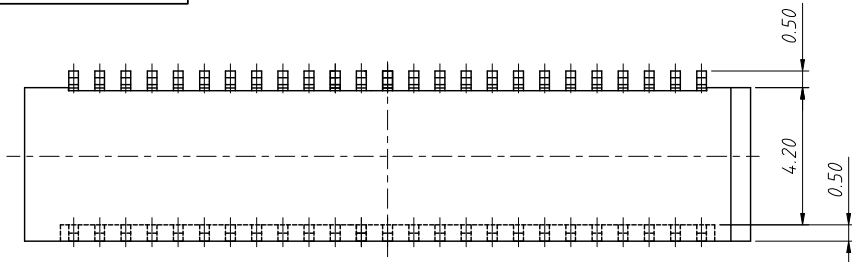
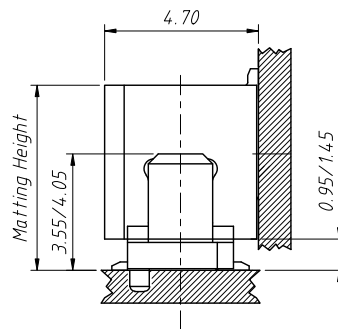


RoHS Compliance



Circuit	A	B	C	Circuit	A	B	C
10	6.20	4.90	3.20	34	15.80	14.50	12.80
12	7.00	5.70	4.00	36	16.60	15.30	13.60
14	7.80	6.50	4.80	38	17.40	16.10	14.40
16	8.60	7.30	5.60	40	18.20	16.90	15.20
18	9.40	8.10	6.40	50	22.20	20.90	19.20
20	10.20	8.90	7.20	60	26.20	24.90	23.20
22	11.00	9.70	8.00	68	29.40	28.10	26.40
24	11.80	10.50	8.80	70	30.20	28.90	27.20
26	12.60	11.30	9.60	80	34.20	32.90	31.20
28	13.40	12.10	10.40	90	38.20	36.90	35.20
30	14.20	12.90	11.20	100	42.20	40.90	39.20
32	15.00	13.70	12.00				



Mating Drawing (Ref)

Material and Plated

- 1.Housing:High Temp Plastic,(LCP UL94V-0)
- 2.Contact:Phosphor Bronze
- 3.Plated:Gold Plated
- 4.Package:800PCS/Reel

Specifications:

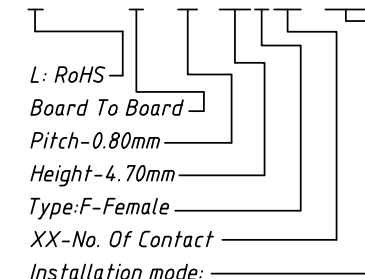
- 1.Current Rating:1.75A AC/DC
- 2.Voltage Rating:100V AC/DC
- 3.Contact Resistance:40mΩ. max.
- 4.Insulation Resistance:100MΩ. min.
- 5.Withstanding Voltage:500V AC for one minute
- 6.Operating Temperature Range:-40°C to + 105°C

Mating Height Dimension

P/N Plug	P/N Socket	Mating Height
B0408-405M	B0508-415F	5.5
B0408-355M	B0508-515F	6.0
B0408-405M	B0508-565F	7.0
B0408-405M	B0508-470F	6.15

Order Information:

L-KLS1-B0508-470FXX-TR



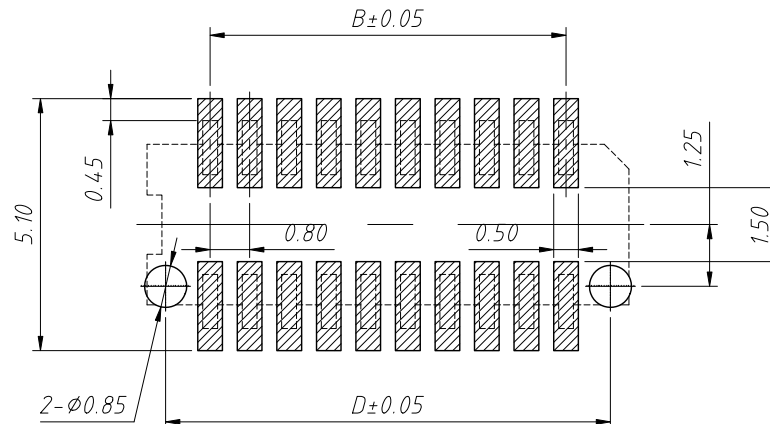
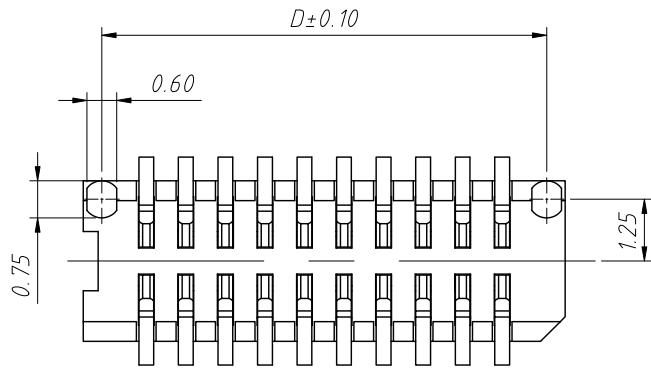
T=SMD Without Post, T3=SMD With Post
Packing:R=Reel T=Tube

ANGLE TOLERANCE	PROJECTION	Description:
±3°		Pitch 0.8mm Board to Board Connector H5.00~15.00mm
GENERAL TOLERANCE	UNITS	mm
x.x ±0.30	SHEET SIZE	A4
x.xx ±0.20	Draw:	Daniel 2020-11-11
x.xxx ±0.10	Check:	Daniel 2020-11-11

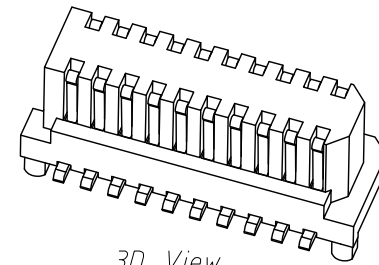
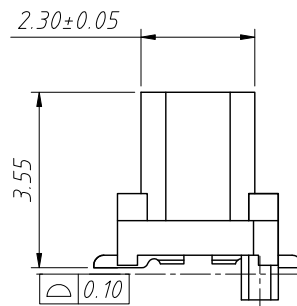
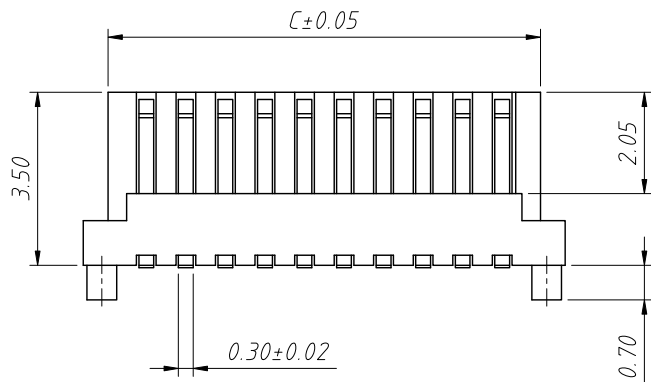


NingBo KLS ELECTRONIC CO.,L.TD.

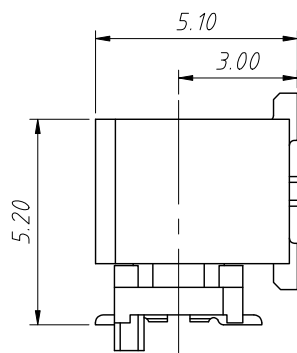
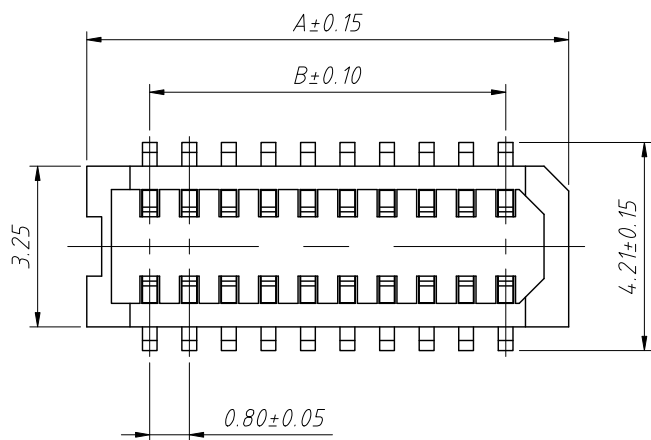
RoHS Compliance



Recommended PCB Pattern Dim
Tolerance: ±0.05



3D View

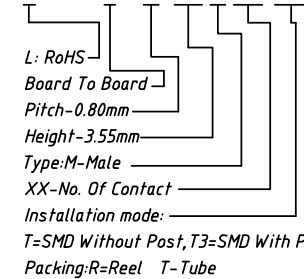


Mating Height
Scale: 1.25:1

No. Of Pins	Dimensions			
	A	B	C	D
4	3.35	0.80	2.35	2.60
6	4.15	1.60	3.15	3.40
8	4.95	2.40	3.95	4.20
10	5.75	3.20	4.75	5.00
12	6.55	4.00	5.55	5.80
14	7.35	4.80	6.35	6.60
16	8.15	5.60	7.15	7.40
18	8.95	6.40	7.95	8.20
20	9.75	7.20	8.75	9.00
22	10.55	8.00	9.55	9.80
24	11.35	8.80	10.35	10.60
26	12.15	9.60	11.15	11.40
28	12.95	10.40	11.95	12.20
30	13.75	11.20	12.75	13.00
32	14.55	12.00	13.55	13.80
34	15.35	12.80	14.35	14.60
36	16.15	13.60	15.15	15.40
38	16.95	14.40	15.95	16.20
40	17.75	15.20	16.75	17.00
42	18.55	16.00	17.55	17.80
44	19.35	16.80	18.35	18.60
46	20.15	17.60	19.15	19.40
48	20.95	18.40	19.95	20.20
50	21.75	19.20	20.75	21.00
52	22.55	20.00	21.55	21.80

Order Information:

L-KLS1-B0508-355 M XX-T3R



Notes:

- Hosing: PA9T High-Temp Thermoplastic, UL 94 V-0
- Color: Cream-Coloured
- Terminal: Phosphor Bronze
- Plating: 1u" Cold Flash Overall
- 50~100u" Nickel Under Plated

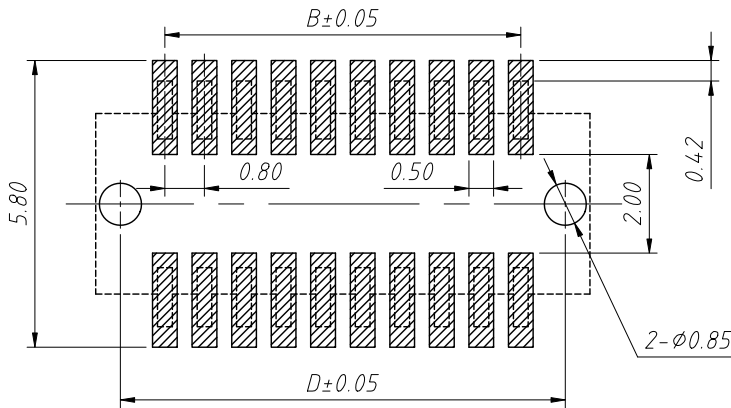
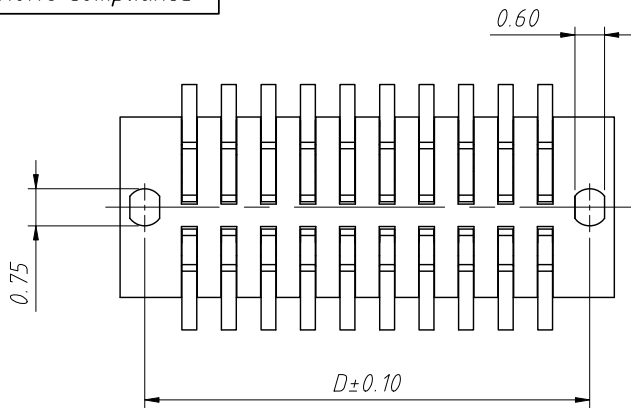
ANGLE TOLERANCE	PROJECTION	Description:
±3°		0.8mm Board To Board Plug
GENERAL TOLERANCE	UNITS	mm
x.x ±0.30	SHEET SIZE	A4
x.xx ±0.20	Draw:	Daniel 2020-11-11
x.xxx ±0.10	Check:	Daniel 2020-11-11

L-KLS1-B0508-355MXX-T3R



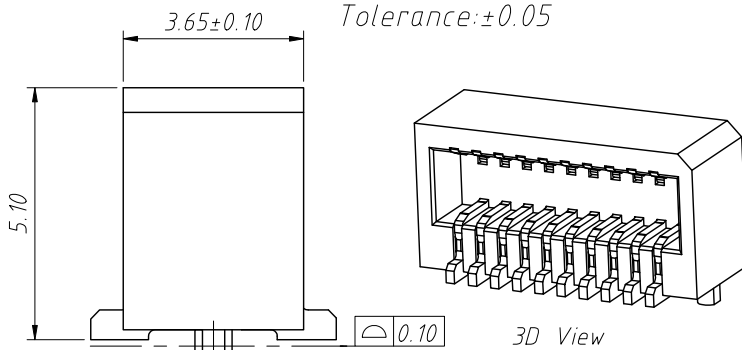
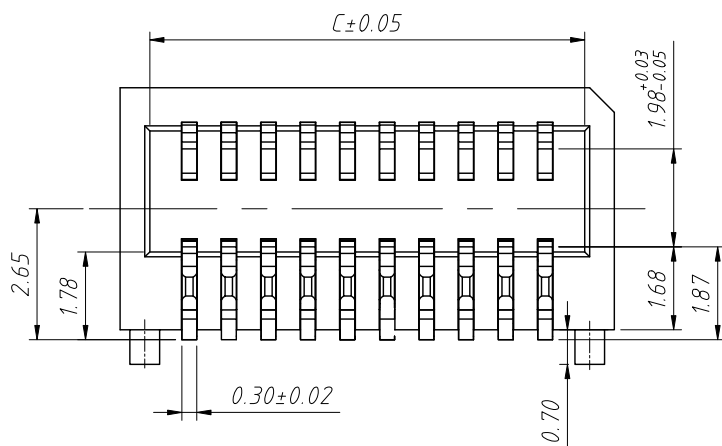
NingBo KLS ELECTRONIC CO.,L TD.

RoHS Compliance

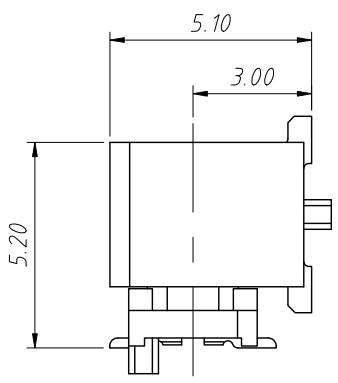
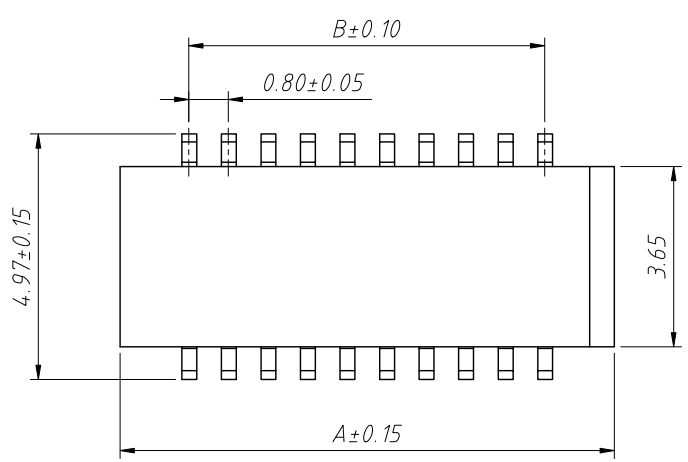


Recommended PCB Pattern Dim
Tolerance: ±0.05

No. Of Pins	Dimensions			
	A	B	C	D
4	3.60	0.80	2.40	2.60
6	4.40	1.60	3.20	3.40
8	5.20	2.40	4.00	4.20
10	6.00	3.20	4.80	5.00
12	6.80	4.00	5.60	5.80
14	7.60	4.80	6.40	6.60
16	8.40	5.60	7.20	7.40
18	9.20	6.40	8.00	8.20
20	10.00	7.20	8.80	9.00
22	10.80	8.00	9.60	9.80
24	11.60	8.80	10.40	10.60
26	12.40	9.60	11.20	11.40
28	13.20	10.40	12.00	12.20
30	14.00	11.20	12.80	13.00
32	14.80	12.00	13.60	13.80
34	15.60	12.80	14.40	14.60
36	16.40	13.60	15.20	15.40
38	17.20	14.40	16.00	16.20
40	18.00	15.20	16.80	17.00
42	18.80	16.00	17.60	17.80
44	19.60	16.80	18.40	18.60
46	20.40	17.60	19.20	19.40
48	21.20	18.40	20.00	20.20
50	22.00	19.20	20.80	21.00
52	22.80	20.00	21.60	21.80



3D View



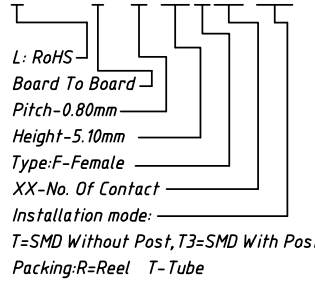
Mating Height
Scale: 1.25:1

Notes

- Hosing: PA9T, High-Temp Thermoplastic, UL 94 V-0, Color: Cream-Coloured
- Terminal: Phosphor Bronze
Plating: 1u" Cold Flash Overall
50 ~ 100u" Nickel Under Plated

Order Information:

L-KLS1-B0508-510 F XX-T3R



ANGLE TOLERANCE	PROJECTION	Description:
±3°		0.8mm Board To Board Socket
GENERAL TOLERANCE	UNITS	mm
x.x ±0.30	SHEET SIZE	A4
x.xx ±0.20	Draw:	Daniel 2020-11-11
x.xxx ±0.10	Check:	Daniel 2020-11-11

L-KLS1-B0508-510FXX-T3R

NingBo KLS ELECTRONIC CO.,L TD.