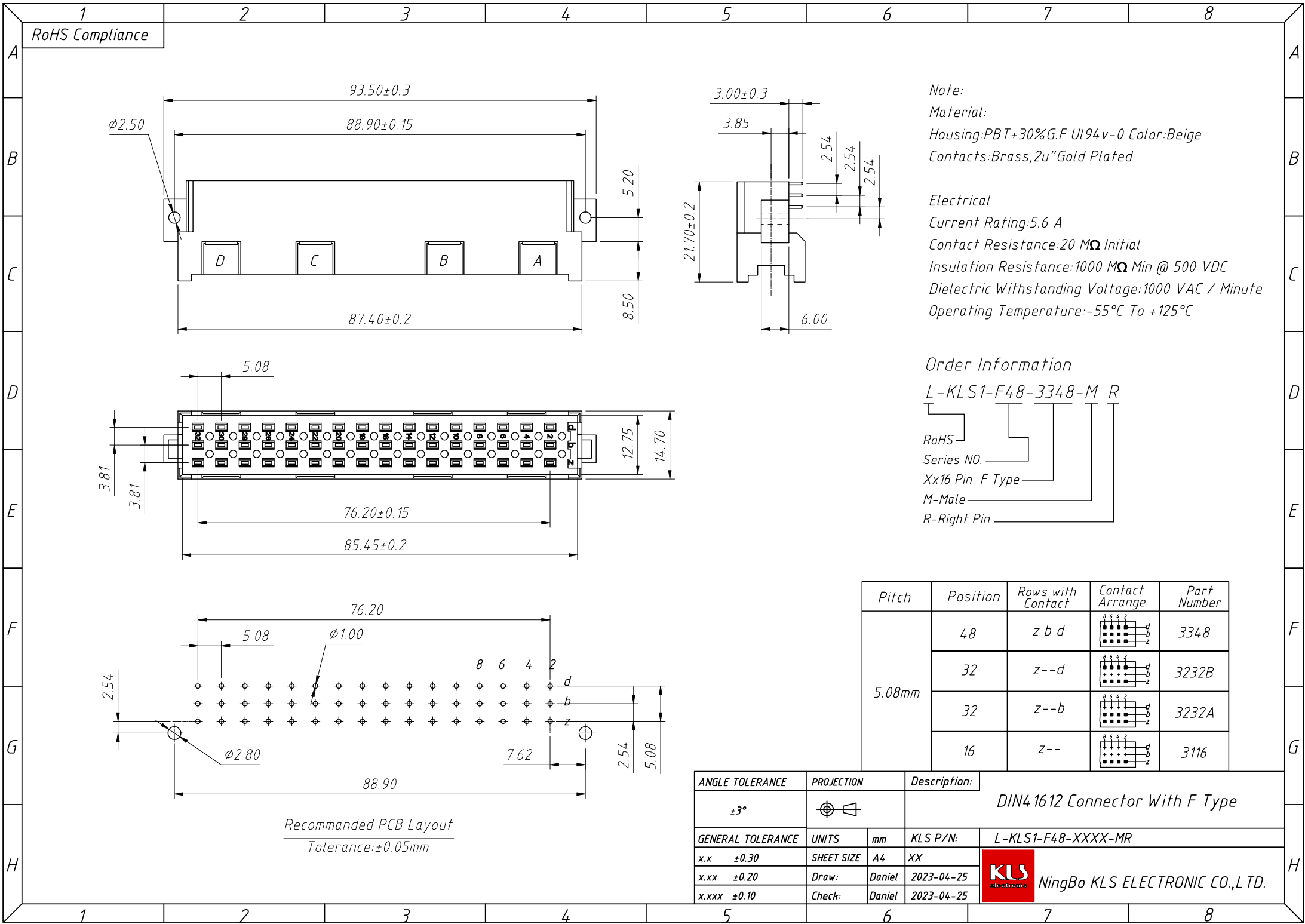


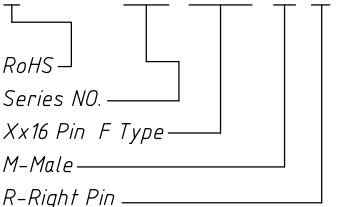
1
RoHS Compliance



Note:
Material:
Housing:PBT+30%G.F UI94 v-0 Color:Beige
Contacts:Brass,2u"Gold Plated

Electrical
Current Rating:5.6 A
Contact Resistance:20 MΩ Initial
Insulation Resistance:1000 MΩ Min @ 500 VDC
Dielectric Withstanding Voltage:1000 VAC / Minute
Operating Temperature:-55°C To +125°C

Order Information
L-KLS1-F48-3348-M R



| Pitch | Position | Rows with Contact | Contact Arrange | Part Number |
|--------|----------|-------------------|-----------------|-------------|
| 5.08mm | 48 | z b d | | 3348 |
| | 32 | z--d | | 3232B |
| | 32 | z--b | | 3232A |
| | 16 | z-- | | 3116 |

| ANGLE TOLERANCE | PROJECTION | Description: | | |
|-------------------|------------|---------------------------------|------------|---------------------------------|
| ±3° | | DIN4 1612 Connector With F Type | | |
| GENERAL TOLERANCE | UNITS | mm | KLS P/N: | L-KLS1-F48-XXXX-MR |
| x.x ±0.30 | SHEET SIZE | A4 | XX | NingBo KLS ELECTRONIC CO.,L TD. |
| x.xx ±0.20 | Draw: | Daniel | 2023-04-25 | |
| x.xxx ±0.10 | Check: | Daniel | 2023-04-25 | |