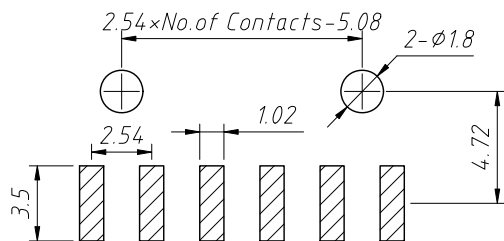
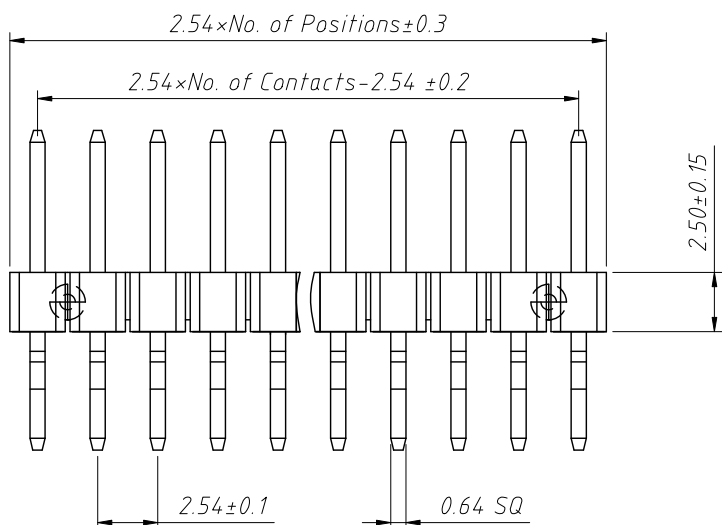
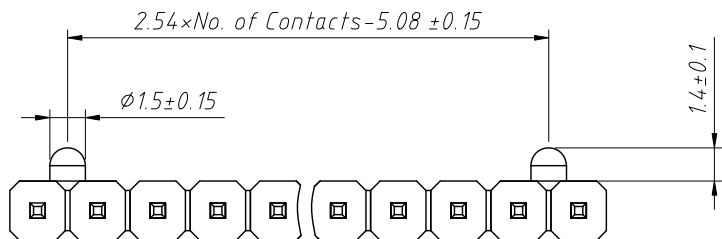
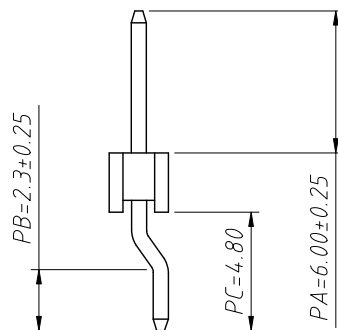


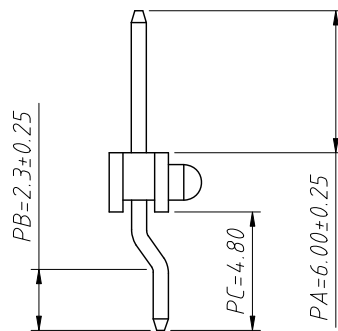
RoHS Compliance



Recommended P.C.B Layout (Top VIEW)
(PCB BOARD TOLERANCE ± 0.05)



N=W/O Post



W: With post $\phi 1.3H1.2$
W1: With post $\phi 1.5H1.4$

Dimension antitheses list (mm)				
ITEM	PA	PB	PC	Plastic Height
Standard	6.00	2.30	4.80	2.50
Nonstandard	---	---	---	---

Material:
Standard: PA6T
Contact: Brass
Insulator: Polyester, UL94V-0

Electrical Characteristics:
Rated Current: 3AMP
Contact Resistance: 20m Ω Max
Withstand Voltage: 1000V AC/DC
Insulator Resistance: 1000M Ω Min

Mechanical
Operating Temperature: -40°C ~ +105°C

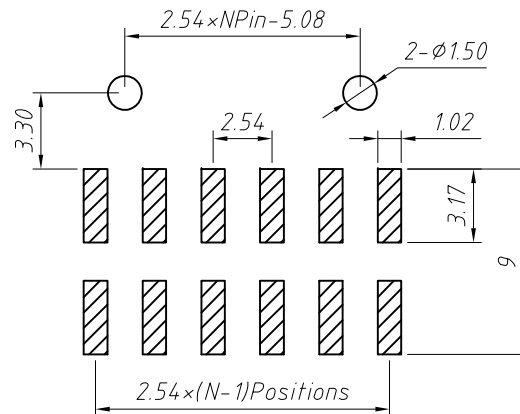
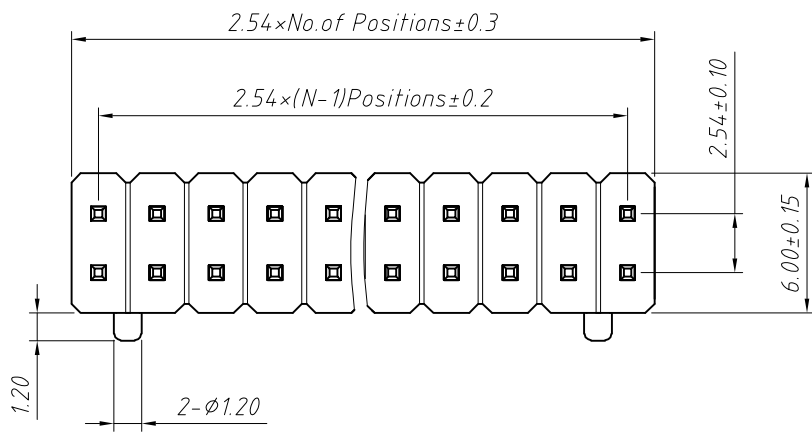
Order Information:
L-KLS1-207A-1-XX-PAxPCxPB-G0-W1-R

L: RoHS
Pin Header Series
207A: 2.54mm
Per Row: Single layer
Pin: No. of Pins (1x40)
Size: PAxPCxPB
Plating:
G0=Gold Flash G1=1u" Gold G10=10u" Gold
G15=15u" Gold G30=30u" Gold
Post: N=W/O Post
W: With post $\phi 1.3H1.2$ W1: With post $\phi 1.5H1.4$
Packing:
0=PE Bag A=Tray T=Tube
P=Tube+Cap R=Reel+Cap

ANGLE TOLERANCE	PROJECTION	Description:	2.54x2.5Pin Header	
±3°		Single layer, 1xN Pin horizontal SMT		
GENERAL TOLERANCE	UNITS	mm	KLS P/N:	L-KLS1-207A-1-XX-PAxPCxPB-G0-W1-R
x.x ±0.30	SHEET SIZE	A4		
x.xx ±0.20	Draw:	Daniel	2018-07-10	
x.xxx ±0.10	Check:	Daniel	2018-07-10	

NingBo KLS ELECTRONIC CO., L TD.

RoHS Compliance



Recommended P.C.B Layout (Top VIEW)
(PCB BOARD TOLERANCE ± 0.05)

Order Information:

L-KLS1-207A-2-XX-PA×PC×PD×PB-G0-W-R

L: RoHS

Pin Header Series

207A: 2.54mm

Per Row: Double layer

Pin: No. of Pins (2×40)

Size: PA×PC×PD×PB

Plating:

G0=Gold Flash G1=1u" Gold G10=10u" Gold

G15=15u" Gold G30=30u" Gold

Post: W=With Post N=W/O Post

Packing:

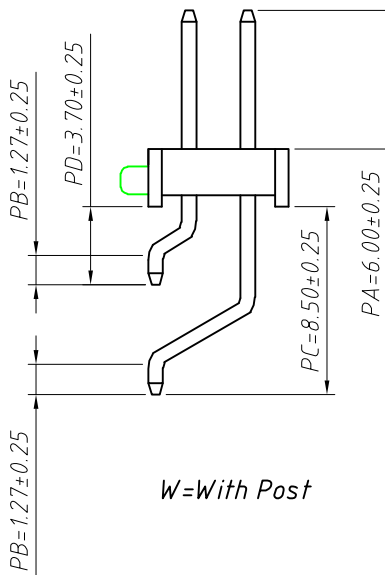
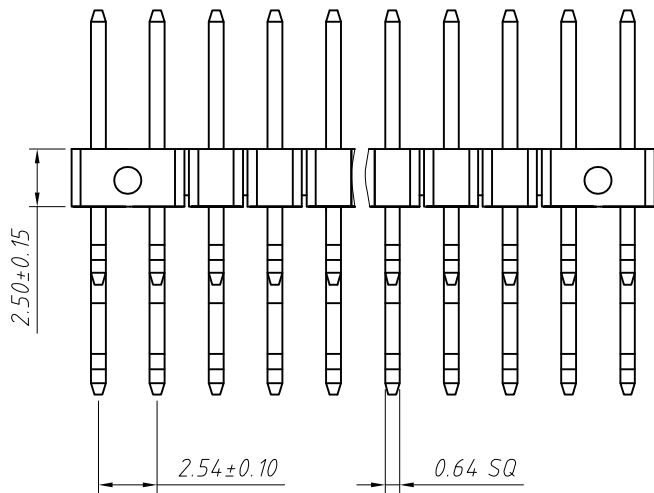
0=PE Bag

A=Tray

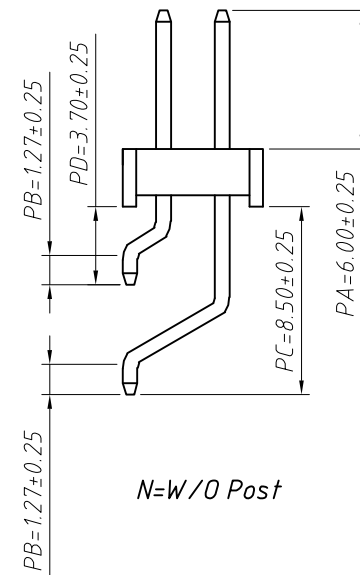
T=Tube

P=Tube+Cap

R=Reel+Cap



W=With Post



N=W/O Post

Material:

Standard: PA6T

Contact: Brass

Insulator: Polyester, UL94V-0

Electrical Characteristics:

Rated Current: 3AMP

Contact Resistance: 20mΩ Max

Withstand Voltage: 1000V AC/DC

Insulator Resistance: 1000MΩ Min

Mechanical

Operating Temperature: -40°C ~ +105°C

Dimension antitheses list (mm)

ITEM	PA	PB	PC	PD	Plastic Height
Standard	6.00	1.27	8.50	3.70	2.50
Nonstandard	---	---	---	---	---

ANGLE TOLERANCE	PROJECTION	Description:
±3°		2.54x2.5Pin Header Double layer, 2×N Pin horizontal SMT
GENERAL TOLERANCE	UNITS	mm
x.x ±0.30	SHEET SIZE	A4
x.xx ±0.20	Draw:	Daniel 2018-07-10
x.xxx ±0.10	Check:	Daniel 2018-07-10



NingBo KLS ELECTRONIC CO., L TD.