

Item No.	Cable Range >IØ < (mm)	Outer diameter of thread (mm)	Mounting hole diameter (mm)	Thread length L(mm)	Joint length H(mm)	Wrench diameter (MM)
PG-07	3~6.5	12.5	12.5~12.8	8	22	16
PG-07S	2~5	12.5	12.5~12.8	8	22	16
PG-09	4~8	15.2	15.2~15.5	8	26	19
PG-09S	2~6	15.2	15.2~15.5	8	26	19
PG-11	5~10	18.6	18.6~18.9	8	27	22
PG-11S	3~7	18.6	18.6~18.9	8	27	22
PG-13.5	6~12	20.4	20.4~20.7	9	28	24
PG-13.5S	5~9	20.4	20.4~20.7	9	28	24
PG-16	10~14	22.5	22.5~22.8	10	30	27
PG-16S	7~12	22.5	22.5~22.8	10	30	27
PG-19	12~16	24	24~24.3	10	30	27
PG-19S	10~13	24	24~24.3	10	30	27
PG-21	13~18	28.3	28.3~28.6	10	35	33
PG-21S	9~16	28.3	28.3~28.6	10	35	33
PG-25	16~21	30	30~30.3	11	34	35
PG-25S	13~18	30	30~30.3	11	34	35
PG-29	18~25	37	37~37.3	12	40	42
PG-29S	13~20	37	37~37.3	12	40	42
PG-36	22~32	47	47~47.3	14	48	52
PG-36S	20~26	47	47~47.3	14	48	52
PG-42	32~38	54	54~54.3	14	49	60
PG-42S	25~31	54	54~54.3	14	49	60
PG-48	37~44	59.3	59.3~59.6	14	50	64
PG-48S	29~35	59.3	59.3~59.6	14	50	64
PG-63	42~50	70	70~70.3	27	60	72



Nylon Cable Glands

KLS8-0607 PG Type Nylon Cable Glands

Material: Nylon PA6
 Sealing: NBR, EPDM
 Working temperature: -35℃ ~100℃ , (120℃ ,short time)
 Characteristics: IP65, IP67, IP68
 Color: Black , light grey

Oder Information

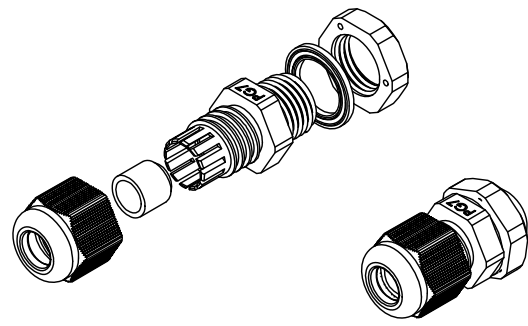
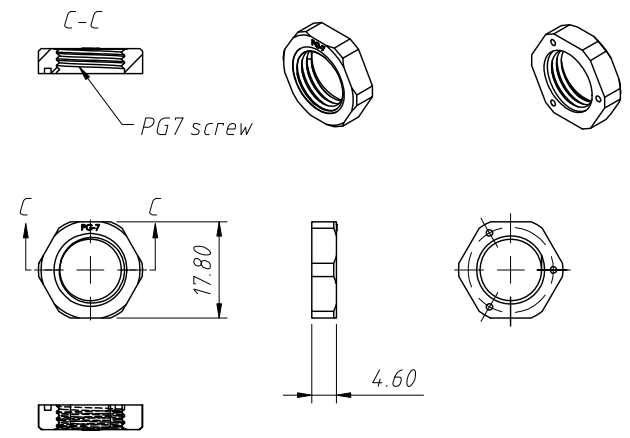
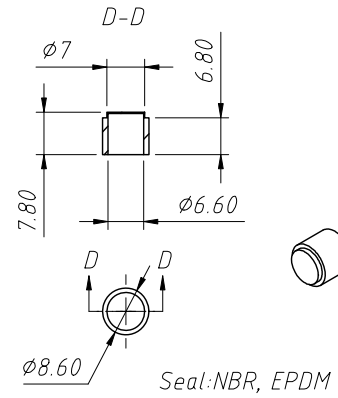
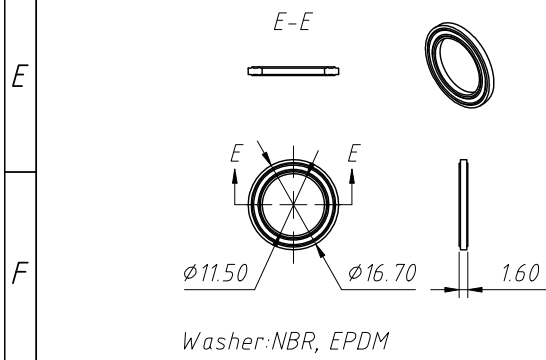
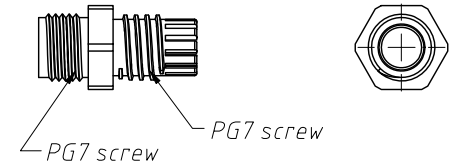
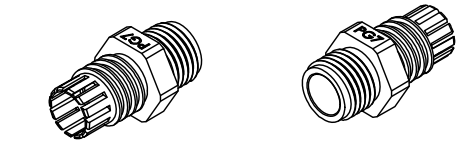
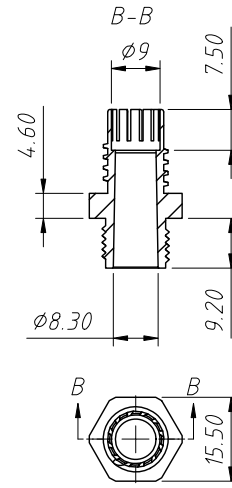
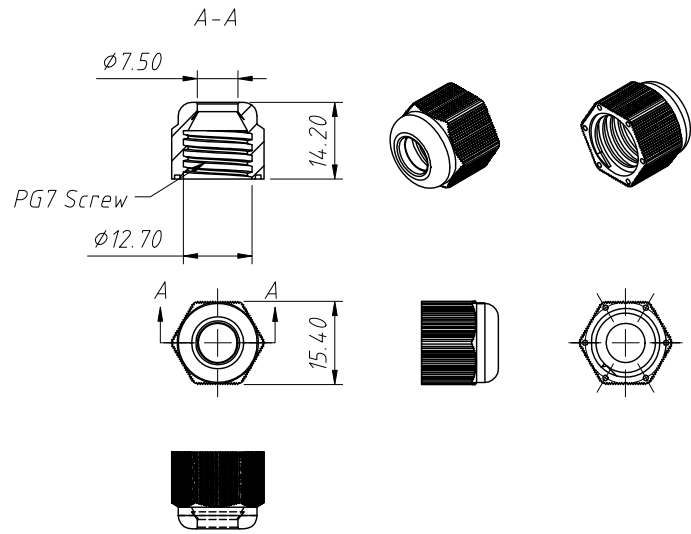
KLS8-0607-PG-XX-B

0607: PG Type Nylon Cable Glands
 PG-7: Item No.
 B: Color Code: B-Black G-Gray

ANGLE TOLERANCE	PROJECTION	Description:	Nylon Cable Gland (PG Type)	
±3°				
GENERAL TOLERANCE	UNITS	mm	KLS P/N:	L-KLS8-0607
x.x ±0.30	SHEET SIZE	A4		
x.xx ±0.20	Draw:	Jenny	2024-01-25	NingBo KLS ELECTRONIC CO.,L TD.
x.xxx ±0.10	Check:	Daniel	2024-01-25	

1 RoHS Compliance

REV	SYM	Revision Record	Appr.	Date
V0	KLS08257	New Version Release	Jenny	2023-07-15



Material:Nylon PA6 ,UL94 V-2
 Characteristics:IP65,IP67,IP68
 Color:Black

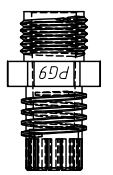
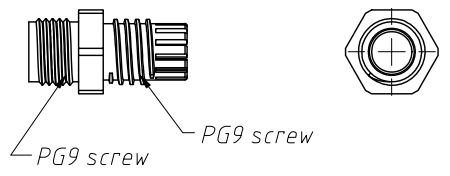
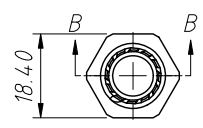
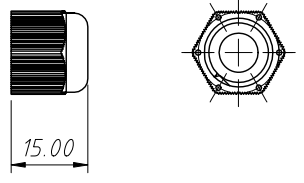
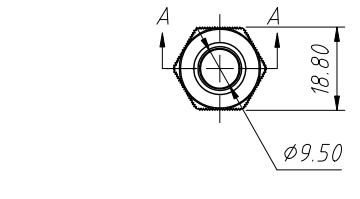
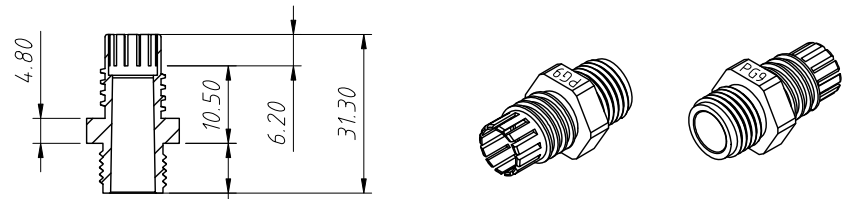
ANGLE TOLERANCE	PROJECTION	Description:	PG7 Waterproof Joint	
±3°				
GENERAL TOLERANCE	UNITS	mm	KLS P/N:	L-KLS8-0607-PG-07-G
x.x ±0.30	SHEET SIZE	A4		
x.xx ±0.20	Draw:	Jenny	2023-08-04	NingBo KLS ELECTRONIC CO.,LTD.
x.xxx ±0.10	Check:	Daniel	2023-08-04	

1
RoHS Compliance

2	3	4	5	6	7	8
REV	SYM	Revision Record		Appr.	Date	
V0	KLS08257	New Version Release		Jenny	2024-01-23	

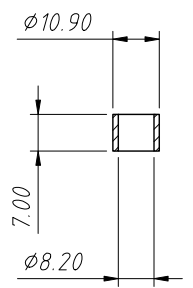
A-A

B-B

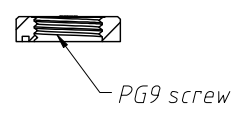
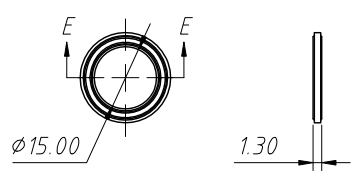


E-E

D-D

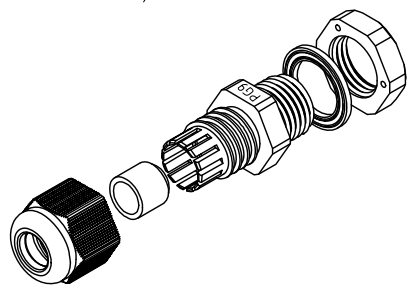
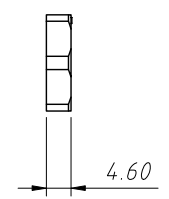
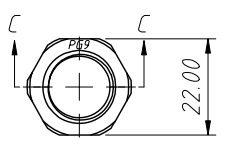


C-C



Washer: NBR, EPDM

Seal: NBR, EPDM

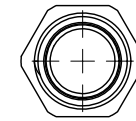
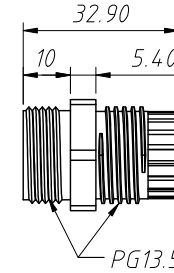
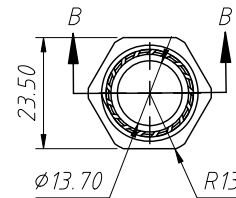
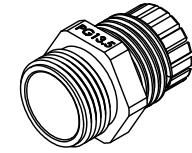
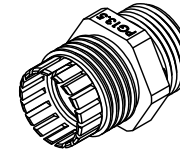
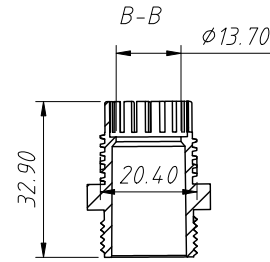
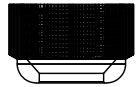
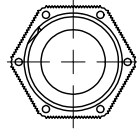
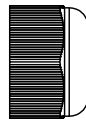
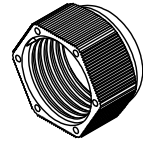
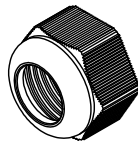
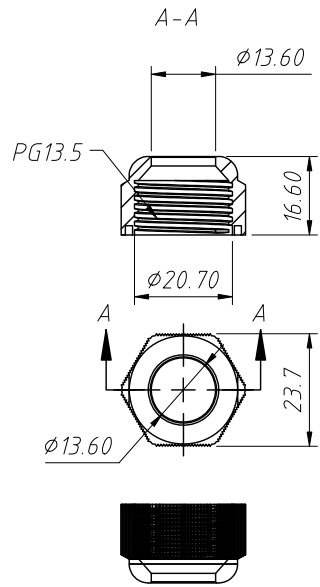


Material: Nylon PA6 ,UL94 V-2
Characteristics: IP65, IP67, IP68
Color: Black

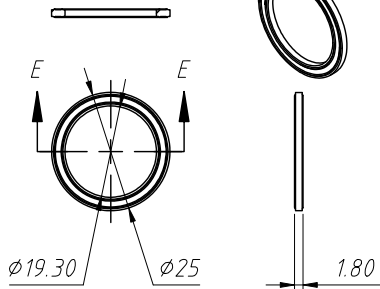
ANGLE TOLERANCE	PROJECTION	Description:		PG9 Waterproof Joint
±3°				
GENERAL TOLERANCE	UNITS	mm	KLS P/N:	L-KLS8-0607-PG-09-G
x.x ±0.30	SHEET SIZE	A4		
x.xx ±0.20	Draw:	Jenny	2024-01-23	NingBo KLS ELECTRONIC CO.,LTD.
x.xxx ±0.10	Check:	Daniel	2024-01-23	

1 RoHS Compliance

REV	SYM	Revision Record	Appr.	Date
V0	KLS08257	New Version Release	Jenny	2024-01-23

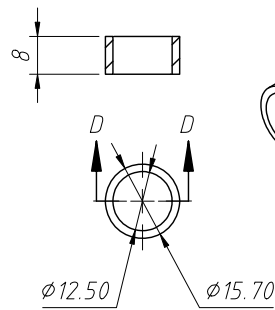


E-E

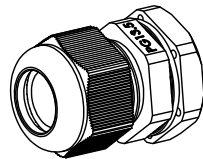
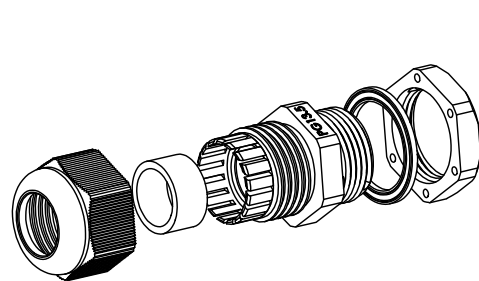
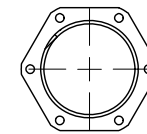
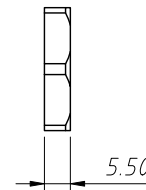
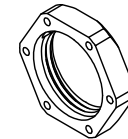
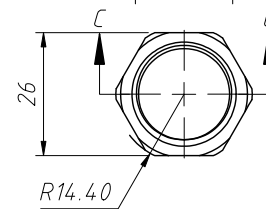
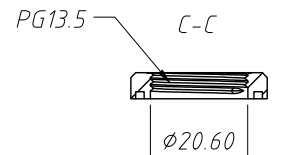


Washer: NBR, EPDM

D-D



Seal: NBR, EPDM



Material: Nylon PA6, UL 94V-2
 Characteristics: IP65, IP67, IP68
 Color: Black

ANGLE TOLERANCE	PROJECTION	Description:	PG13.5 Waterproof Joint	
$\pm 3^\circ$				
GENERAL TOLERANCE	UNITS	mm	KLS P/N:	L-KLS8-0607-PG-13.5-G
x.x ± 0.30	SHEET SIZE	A4		
x.xx ± 0.20	Draw:	Jenny	2024-01-23	NingBo KLS ELECTRONIC CO.,LTD.
x.xxx ± 0.10	Check:	Daniel	2024-01-23	