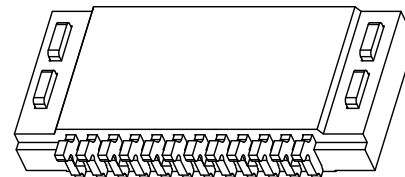
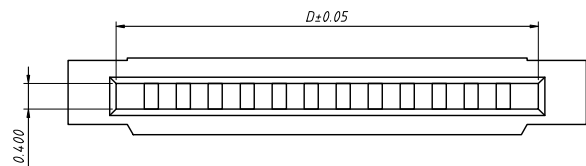


1 RoHS Compliance

REV	SYM	Revision Record	Appr.	Date
V0	KLS01139	New Version Release	Jenny	2023-10-10



Material

Housing: PA46, UL 94V-0, Nature

Contact: C5191-H T=0.20±0.01, Gold flash over Nickel

LEG: C2680-H T=0.25±0.01, Gold flash over Nickel

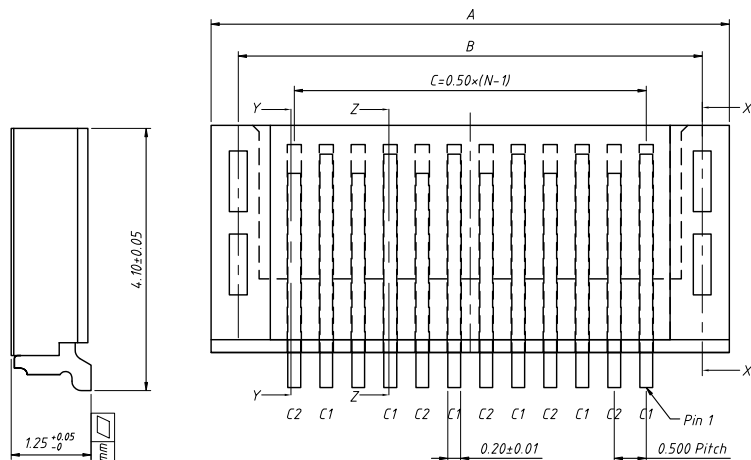
Electrical

Voltage rating: 50V AC/DC

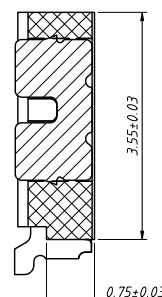
Current rating: 0.5A AC/DC

Mechanical

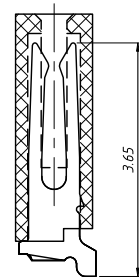
Temp. Range: -40°C ~ +80°C



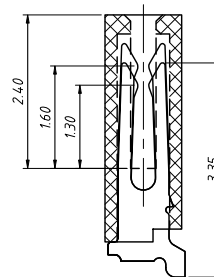
Note: C2 is the short end and C1 is the long end



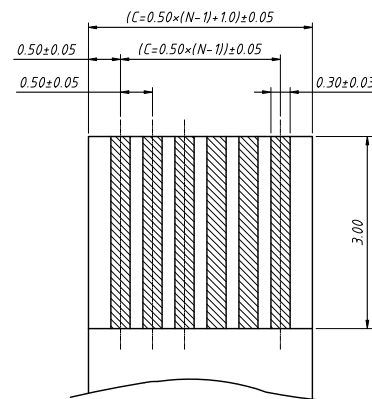
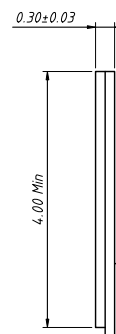
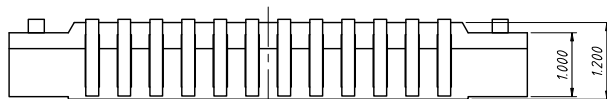
Section X-X



Section Z-Z

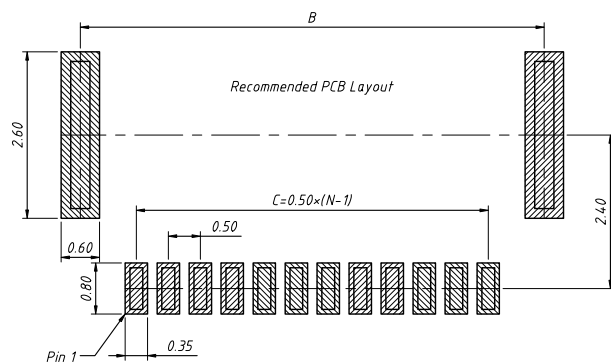


Section Y-Y



Applicable FPC

Pins	Dimensions			Pins	Dimensions		
	A	B	D		A	B	D
04	4.10	3.25	2.60	25	14.60	13.75	13.10
05	4.60	3.75	3.10	26	15.10	14.25	13.60
06	5.10	4.25	3.60	27	15.60	14.75	14.10
07	5.60	4.75	4.10	28	16.10	15.25	14.60
08	6.10	5.25	4.60	29	16.60	15.75	15.10
09	6.60	5.75	5.10	30	17.10	16.25	15.60
10	7.10	6.25	5.60	31	17.60	16.75	16.10
11	7.60	6.75	6.10	32	18.10	17.25	16.60
12	8.10	7.25	6.60	33	18.60	17.75	17.10
13	8.60	7.75	7.10	34	19.10	18.25	17.60
14	9.10	8.25	7.60	35	19.60	18.75	18.10
15	9.60	8.75	8.10	36	20.10	19.25	18.60
16	10.10	9.25	8.60	37	20.60	19.75	19.10
17	10.60	9.75	9.10	38	21.10	20.25	19.60
18	11.10	10.25	9.60	39	21.60	20.75	20.10
19	11.60	10.75	10.10	40	22.10	21.25	20.60
20	12.10	11.25	10.60	41	22.60	21.75	21.10
21	12.60	11.75	11.10	42	23.10	22.25	21.60
22	13.10	12.25	11.60	43	23.60	22.75	22.10
23	13.60	12.75	12.10	44	24.10	23.25	22.60
24	14.10	13.25	12.60	45	24.60	23.75	23.10



Order Information:

L-KLS1-3242A-1.2-XX-T-R

- L: RoHS
- Series No.
- Height: 1.2mm
- No. Of pins (04~45 pins)
- Type: T-SMT Pin
- Pack: R-Reel

ANGLE TOLERANCE	PROJECTION	Description:	0.50mm Pitch FPC Connectors H2.0mm, Double contact
±3°			
GENERAL TOLERANCE	UNITS	mm	L-KLS1-3242A-1.2-XX-T-R
x.x ±0.30	SHEET SIZE	A4	
x.xx ±0.20	Draw:	Jenny	NingBo KLS ELECTRONIC CO.,L TD.
x.xxx ±0.10	Check:	Daniel	