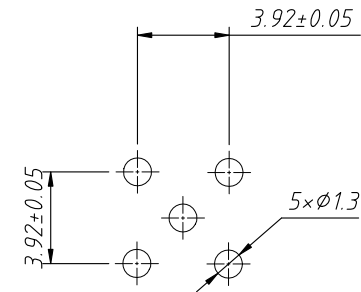
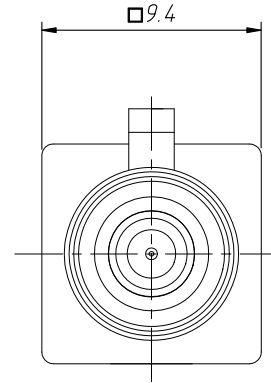
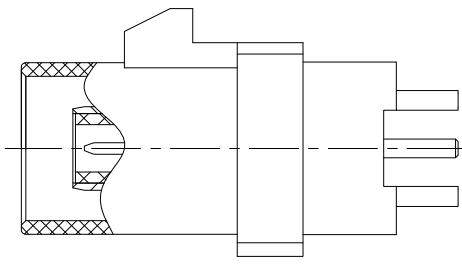
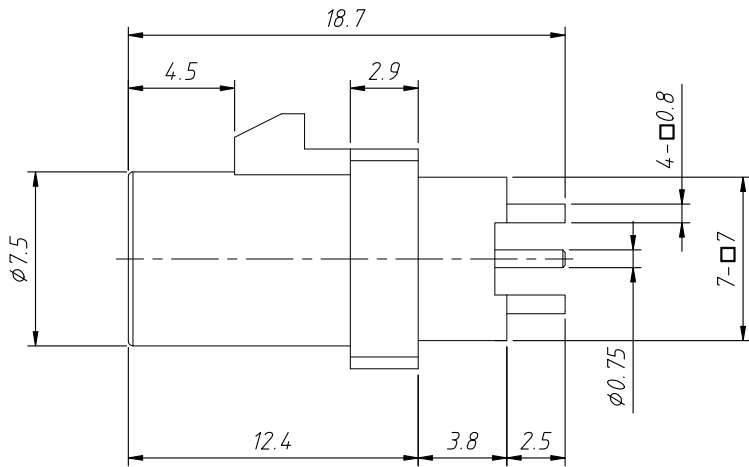
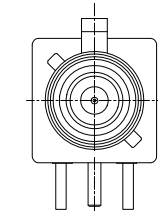


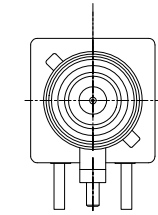
1  
RoHS Compliance



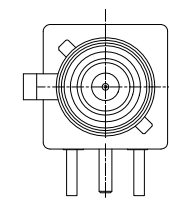
Recommended PCB Layout  
Tolerance: ±0.05mm



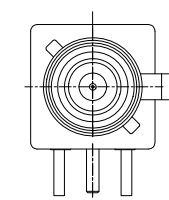
A=up



B=down



C=Left



D=Right

ANGLE TOLERANCE	PROJECTION		Description:	
±3°			Right Angle Plug Fakra Connector	
GENERAL TOLERANCE	UNITS	mm	KLS P/N:	L-KLS1-FAKRA07-18.7-A-9005-1-G
x.x ±0.30	SHEET SIZE	A4	XX	NingBo KLS ELECTRONIC CO.,L TD.
x.xx ±0.20	Draw:	Daniel	2023-05-04	
x.xxx ±0.10	Check:	Daniel	2023-05-04	

1  
RoHS Compliance

Card slot direction	Code	Color	RAL	Order Information
	A	Black	sim.9005	FAKRA07-18.7-A-9005-1-G
	B	White	sim.9001	FAKRA07-18.7-A-9001-1-G
	C	Blue	sim.5005	FAKRA07-18.7-A-5005-1-G
	D	Bordeaux Violet	sim.4004	FAKRA07-18.7-A-4004-1-G
	E	Green	sim.6002	FAKRA07-18.7-A-6002-1-G
	F	Brown	sim.8011	FAKRA07-18.7-A-8011-1-G
	G	Grey	sim.7031	FAKRA07-18.7-A-7031-1-G
	H	Violet	sim.4003	FAKRA07-18.7-A-4003-1-G
	I	Beige	sim.1001	FAKRA07-18.7-A-1001-1-G
	K	Curry	sim.1027	FAKRA07-18.7-A-1027-1-G
	L	Carmine Red	sim.3002	FAKRA07-18.7-A-3002-1-G
	M	Pastel orange	sim.2003	FAKRA07-18.7-A-2003-1-G
	N	Pastel Green	sim.6019	FAKRA07-18.7-A-6019-1-G
	Z	Water Blue	sim.5021	FAKRA07-18.7-A-5021-1-G

Material:

Insulator:PA

Contacts:Copper Alloy

Shell:Zinc Alloy

Contact Plating:

Contact Area:6u" Selective Gold

Solder Tails Area:50u"~150u" Tin(Mattele)

Electrical:

Impedance:50Ω

Insulator Resistance:0300MΩ Min. At 030V DC

Withstanding Voltage:AC 800Vrms Min. 60Hz

Voltage Rating:AC 335Vrms

Current Rating:1.0A Max.

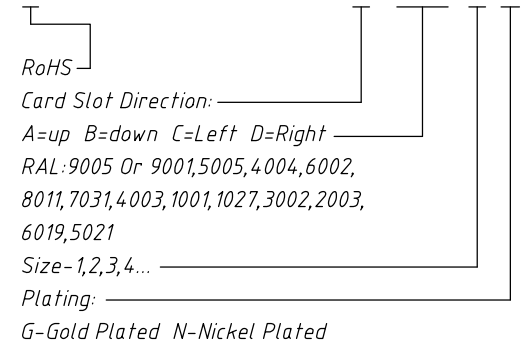
Contact Resistance:03mΩ Max. At 20mV Max.

Operation Temp. Range:-40°C to +035°C

Mating Cycles:25 insertions

Order Information

L-KLS1-FAKRA07-18.7-A-9005-1-G



ANGLE TOLERANCE	PROJECTION	Description:
±3°		Right Angle Plug Fakra Connector
GENERAL TOLERANCE	UNITS	mm
x.x ±0.30	SHEET SIZE	A4
x.xx ±0.20	Draw:	Daniel
x.xxx ±0.03	Check:	Daniel



NingBo KLS ELECTRONIC CO.,L TD.

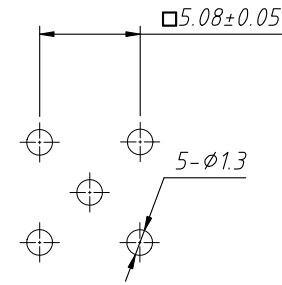
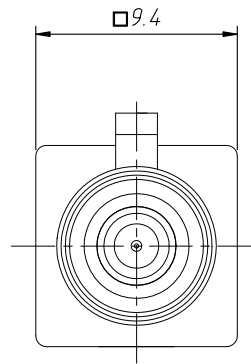
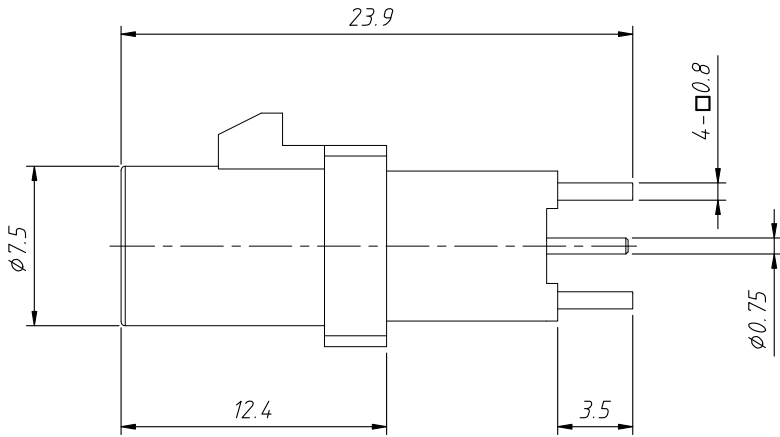
L-KLS1-FAKRA07-18.7-A-9005-1-G

2 Of 2

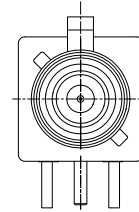
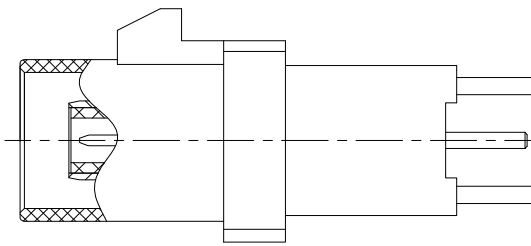
2023-07-12

2023-07-12

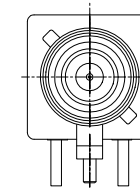
1  
RoHS Compliance



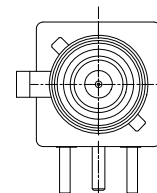
*Recommended PCB Layout*  
Tolerance: ±0.05mm



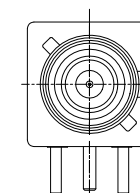
A=up



B=down



C=Left



D=Right

ANGLE TOLERANCE		PROJECTION		Description:	
±3°				Right Angle Plug Fakra Connector	
GENERAL TOLERANCE		UNITS	mm	KLS P/N:	L-KLS1-FAKRA07-23.9-A-9005-1-G
x.x	±0.30	SHEET SIZE	A4	XX	NingBo KLS ELECTRONIC CO.,L TD.
x.xx	±0.20	Draw:	Daniel	2023-05-04	
x.xxx	±0.10	Check:	Daniel	2023-05-04	

1  
RoHS Compliance

Card slot direction	Code	Color	RAL	Order Information
	A	Black	sim.9005	FAKRA07-23.9-A-9005-1-G
	B	White	sim.9001	FAKRA07-23.9-A-9001-1-G
	C	Blue	sim.5005	FAKRA07-23.9-A-5005-1-G
	D	Bordeaux Violet	sim.4004	FAKRA07-23.9-A-4004-1-G
	E	Green	sim.6002	FAKRA07-23.9-A-6002-1-G
	F	Brown	sim.8011	FAKRA07-23.9-A-8011-1-G
	G	Grey	sim.7031	FAKRA07-23.9-A-7031-1-G
	H	Violet	sim.4003	FAKRA07-23.9-A-4003-1-G
	I	Beige	sim.1001	FAKRA07-23.9-A-1001-1-G
	K	Curry	sim.1027	FAKRA07-23.9-A-1027-1-G
	L	Carmine Red	sim.3002	FAKRA07-23.9-A-3002-1-G
	M	Pastel orange	sim.2003	FAKRA07-23.9-A-2003-1-G
	N	Pastel Green	sim.6019	FAKRA07-23.9-A-6019-1-G
	Z	Water Blue	sim.5021	FAKRA07-23.9-A-5021-1-G

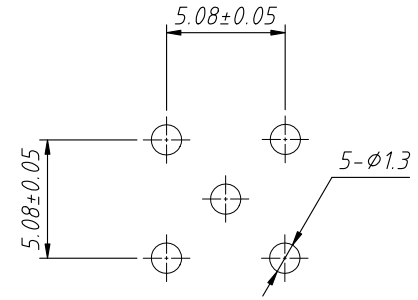
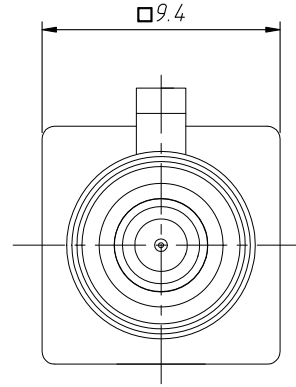
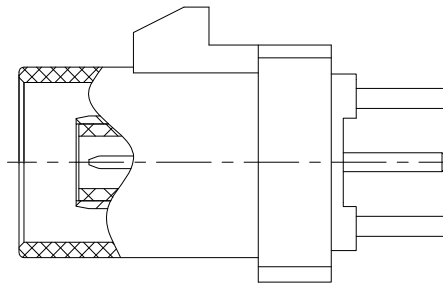
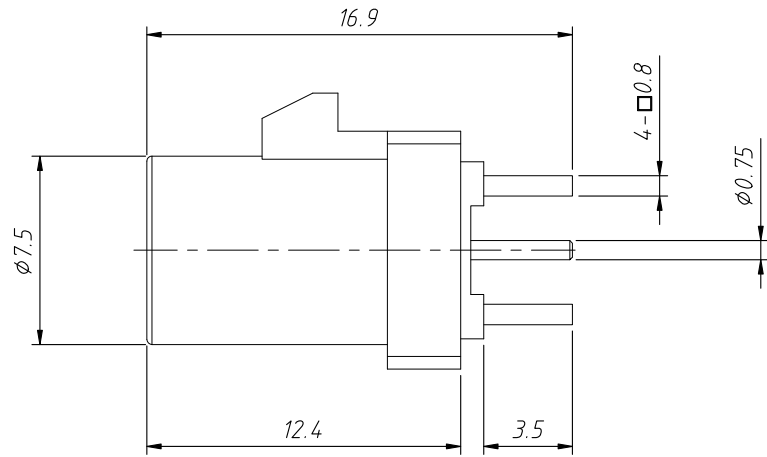
Material:  
 Insulator:PA  
 Contacts:Copper Alloy  
 Shell:Zinc Alloy  
 Contact Plating:  
 Contact Area:6u" Selective Gold  
 Solder Tails Area:50u"~150u" Tin(Mattele)  
 Electrical:  
 Impedance:50Ω  
 Insulator Resistance:0300MΩ Min. At 030V DC  
 Withstanding Voltage:AC 800Vrms Min. 60Hz  
 Voltage Rating:AC 335Vrms  
 Current Rating:1.0A Max.  
 Contact Resistance:03mΩ Max. At 20mV Max.  
 Operation Temp. Range:-40°C to +035°C  
 Mating Cycles:25 insertions

Order Information  
 L-KLS1-FAKRA07-23.9-A-9005-1-G

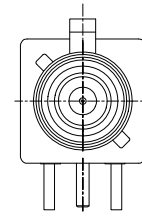
RoHS  
 Card Slot Direction: \_\_\_\_\_  
 A=up B=down C=Left D=Right \_\_\_\_\_  
 RAL:9005 Or 9001,5005,4004,6002,  
 8011,7031,4003,1001,1027,3002,2003,  
 6019,5021  
 Size-1,2,3,4... \_\_\_\_\_  
 Plating: \_\_\_\_\_  
 G-Gold Plated N-Nickel Plated

ANGLE TOLERANCE	PROJECTION	Description:	Right Angle Plug Fakra Connector	
±3°				
GENERAL TOLERANCE	UNITS	mm	KLS P/N:	L-KLS1-FAKRA07-23.9-A-9005-1-G
x.x ±0.30	SHEET SIZE	A4	2 Of 2	NingBo KLS ELECTRONIC CO.,L TD.
x.xx ±0.20	Draw:	Daniel	2023-07-12	
x.xxx ±0.03	Check:	Daniel	2023-07-12	

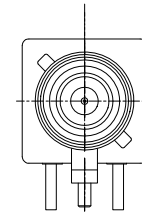
1  
RoHS Compliance



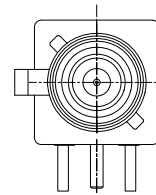
*Recommended PCB Layout*  
Tolerance:±0.05mm



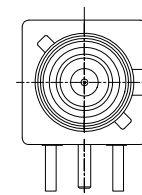
A=up



B=down



C=Left



D=Right

ANGLE TOLERANCE	PROJECTION		Description:	
±3°			Right Angle Plug Fakra Connector	
GENERAL TOLERANCE	UNITS	mm	KLS P/N:	L-KLS1-FAKRA07-A-9005-1-G
x.x ±0.30	SHEET SIZE	A4	XX	NingBo KLS ELECTRONIC CO.,L TD.
x.xx ±0.20	Draw:	Daniel	2023-05-04	
x.xxx ±0.10	Check:	Daniel	2023-05-04	

1  
RoHS Compliance

Card slot direction	Code	Color	RAL	Order Information
	A	Black	sim.9005	FAKRA07-A-9005-1-G
	B	White	sim.9001	FAKRA07-A-9001-1-G
	C	Blue	sim.5005	FAKRA07-A-5005-1-G
	D	Bordeaux Violet	sim.4004	FAKRA07-A-4004-1-G
	E	Green	sim.6002	FAKRA07-A-6002-1-G
	F	Brown	sim.8011	FAKRA07-A-8011-1-G
	G	Grey	sim.7031	FAKRA07-A-7031-1-G
	H	Violet	sim.4003	FAKRA07-A-4003-1-G
	I	Beige	sim.1001	FAKRA07-A-1001-1-G
	K	Curry	sim.1027	FAKRA07-A-1027-1-G
	L	Carmine Red	sim.3002	FAKRA07-A-3002-1-G
	M	Pastel orange	sim.2003	FAKRA07-A-2003-1-G
	N	Pastel Green	sim.6019	FAKRA07-A-6019-1-G
	Z	Water Blue	sim.5021	FAKRA07-A-5021-1-G

Material:

Insulator:PA

Contacts:Copper Alloy

Shell:Zinc Alloy

Contact Plating:

Contact Area:6u" Selective Gold

Solder Tails Area:50u"~150u" Tin(Mattele)

Electrical:

Impedance:50Ω

Insulator Resistance:0300MΩ Min. At 030V DC

Withstanding Voltage:AC 800Vrms Min. 60Hz

Voltage Rating:AC 335Vrms

Current Rating:1.0A Max.

Contact Resistance:03mΩ Max. At 20mV Max.

Operation Temp. Range:-40°C to +035°C

Mating Cycles:25 insertions

Order Information

L-KLS1-FAKRA07-A-9005-1-G

RoHS

Card Slot Direction:

A=up B=down C=Left D=Right

RAL:9005 Or 9001,5005,4004,6002, 8011,7031,4003,1001,1027,3002,2003, 6019,5021

Size-1,2,3,4...

Plating:

G-Gold Plated N-Nickel Plated

ANGLE TOLERANCE	PROJECTION	Description:
±3°		Right Angle Plug Fakra Connector
GENERAL TOLERANCE	UNITS	mm
x.x ±0.30	SHEET SIZE	A4
x.xx ±0.20	Draw:	Daniel
x.xxx ±0.03	Check:	Daniel
		KLS P/N: L-KLS1-FAKRA07-A-9005-1-G
		2 Of 2
		2023-07-12
		2023-07-12



NingBo KLS ELECTRONIC CO.,L TD.