

1  
RoHS Compliance

2

3

4

5

6

7

8

A

B

C

D

E

F

G

H

A

B

C

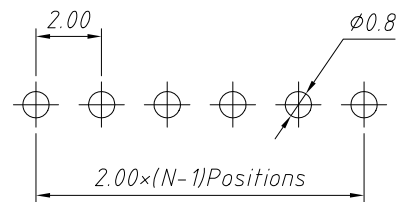
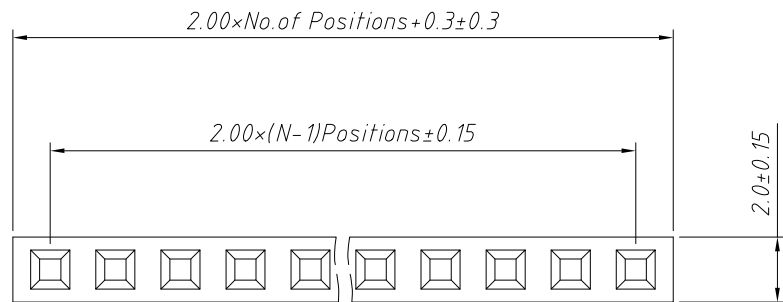
D

E

F

G

H

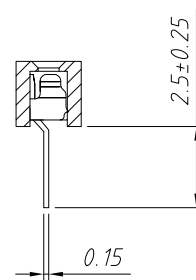
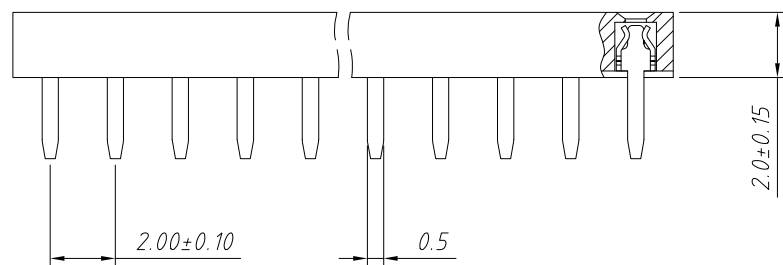


Recommended P.C.B Layout (Top Side)  
(PCB BOARD TOLERANCE±0.05)

Material:  
Standard:PBT/PA6T  
Contact:Phosphor Bronze  
Plating:Au or Sn Over Ni  
Insulator:Polyester,UL 94V-0

Electrical Characteristics:  
Rated Current: 1.5AMP  
Contact Resistance: 20mΩ Max  
Withstand Voltage: 500V AC/DC  
Insulator Resistance: 1000MΩ Min

Mechanical  
Operating Temperature: -40°C ~ +105°C  
Max.Processing Temp:230°C for 30-60 seconds (260°C for 10 seconds)



Order Information:  
L-KLS1-208B-2.0-1-XX-S-B

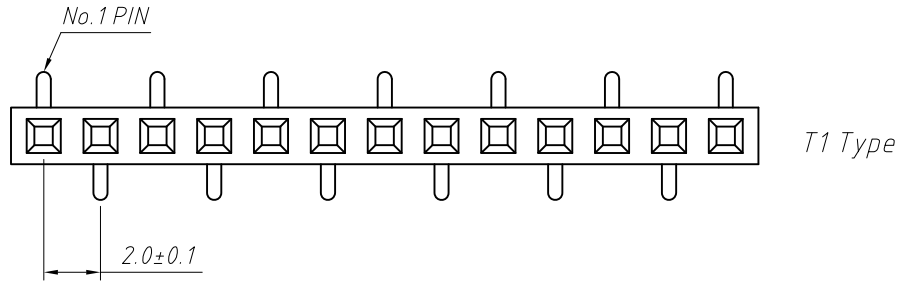
L: RoHS  
Female Header Series-  
208B:2.00mm  
Plastics Height:2.0mm  
Per Row:Single layer  
Pin: No. of Pins (1x40)  
Type: Straight Pin  
Material:A=PBT B=PA6T C=LCP

ANGLE TOLERANCE	PROJECTION	Description:
±3°		2.0x2.0mm Female Header Single layer, Straight Pin, 1xN Pin
GENERAL TOLERANCE	UNITS	mm
x.x ±0.30	SHEET SIZE	A4
x.xx ±0.20	Draw:	Daniel 2018-07-10
x.xxx ±0.10	Check:	Daniel 2018-07-10

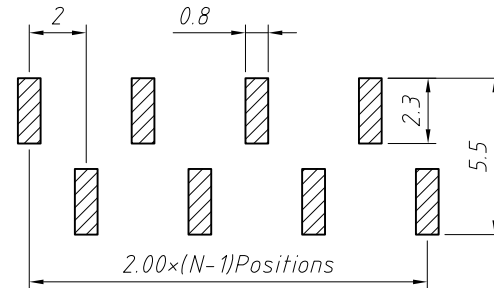
L-KLS1-208B-2.0-1-XX-S-B

NingBo KLS ELECTRONIC CO.,L TD.

1 RoHS Compliance



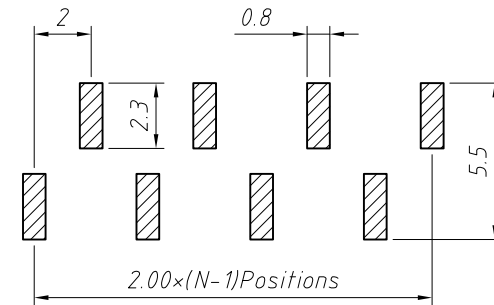
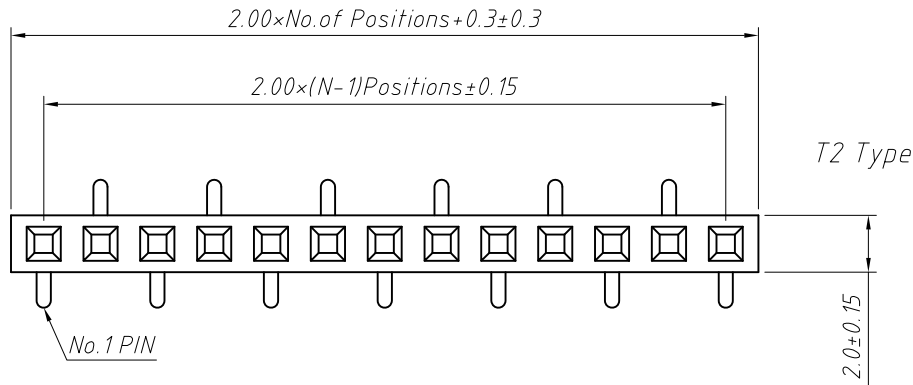
Recommended P.C.B Layout (Top Side)  
(PCB BOARD TOLERANCE±0.05)



Material:  
Standard:PA6T  
Contact:Brass  
Contact plating: Au or Sn over Ni  
Nickel Insulator: Polyester, UL94V-0

Electrical Characteristics:  
Rated Current: 1.5AMP  
Contact Resistance: 20mΩ Max  
Withstand Voltage: 500V AC/DC  
Insulator Resistance: 1000MΩ Min

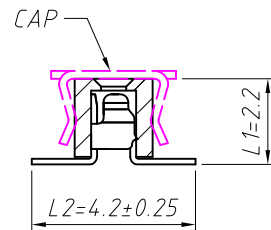
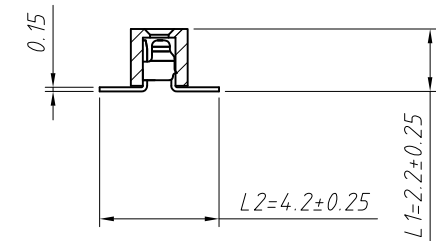
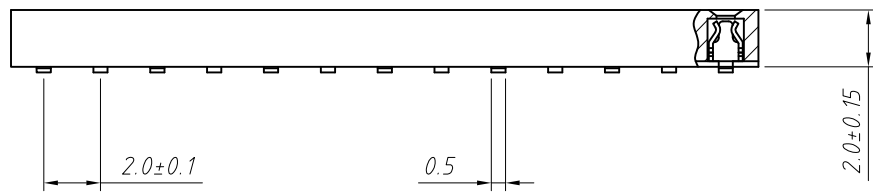
Mechanical  
Operating Temperature: -40°C ~ +105°C  
Max. Processing Temp: 230°C for 30-60 seconds (260°C for 10 seconds)



Order Information:

L-KLS1-208B-2.2-1-XX-T1-L1×L2-N-B-R

L: RoHS  
Female Header Series  
208B: 2.00mm  
Plastics Height: 2.00mm  
Per Row: Single layer  
Pin: No. of Pins (1×40)  
SMT Pin: T1 Type, T2 Type  
Size: L1×L2  
Post: W=With Post N=W/O Post  
Material: A=PBT B=PA6T C=LCP  
Packing:  
A=Tray T=Tube M=Reel+Mylar  
P=Tube+Cap R=Reel+Cap

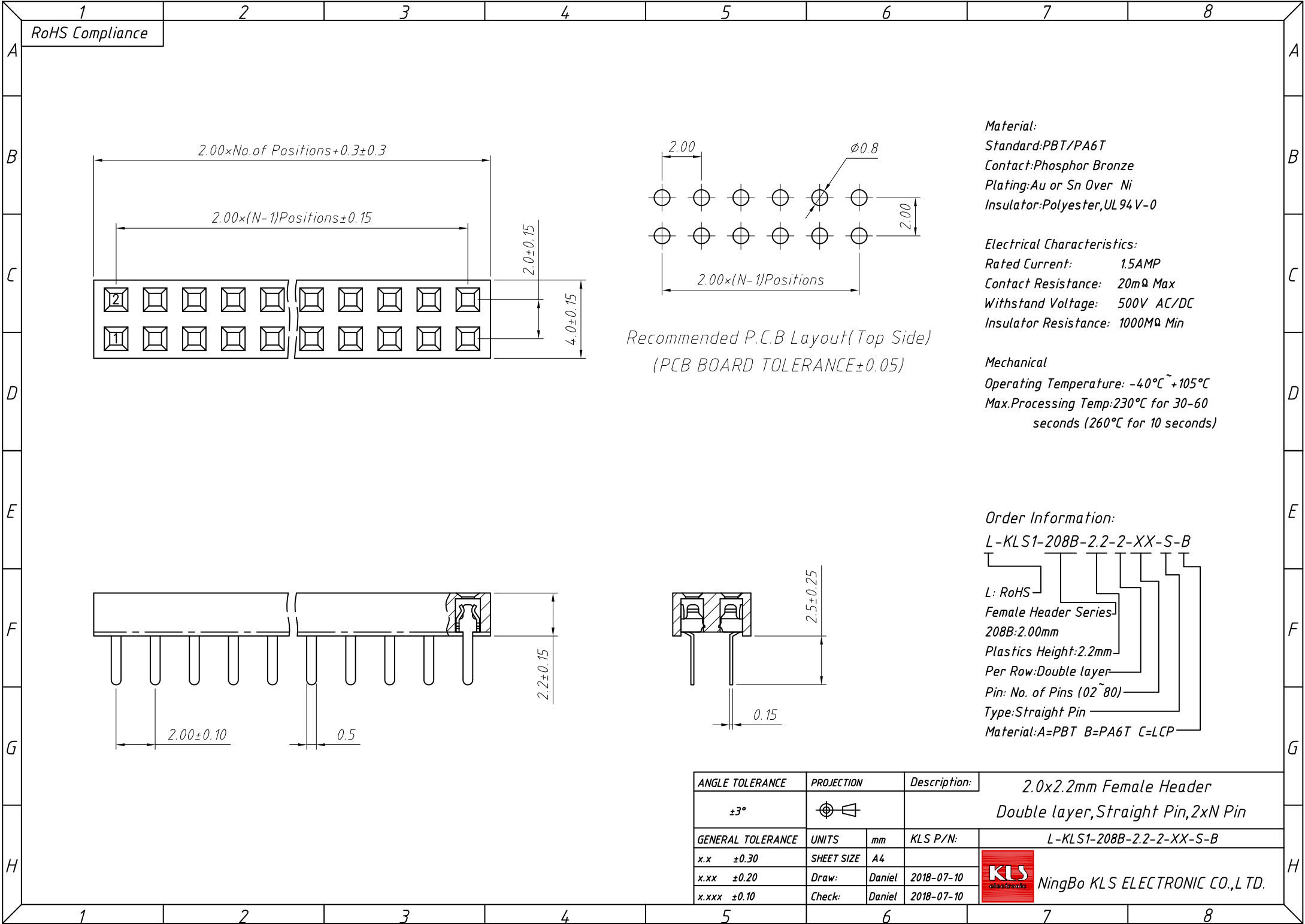


Dimension antitheses list (mm)			
ITEM	L1	L2	Plastic Height
Standard	2.20	4.20	2.00
Nonstandard	---	---	---

ANGLE TOLERANCE	PROJECTION	Description:	2.00mm Female Header Single layer, SMT Pin, 1xN Pin	
±3°				
GENERAL TOLERANCE	UNITS	mm	KLS P/N:	L-KLS1-208B-2.2-1-XX-T1-L1×L2-N-B-R
x.x ±0.30	SHEET SIZE	A4		
x.xx ±0.20	Draw:	Daniel	2018-07-10	
x.xxx ±0.10	Check:	Daniel	2018-07-10	

NingBo KLS ELECTRONIC CO., L TD.

1  
RoHS Compliance



**Material:**  
 Standard: PBT/PA6T  
 Contact: Phosphor Bronze  
 Plating: Au or Sn Over Ni  
 Insulator: Polyester, UL94V-0

**Electrical Characteristics:**  
 Rated Current: 1.5AMP  
 Contact Resistance: 20mΩ Max  
 Withstand Voltage: 500V AC/DC  
 Insulator Resistance: 1000MΩ Min

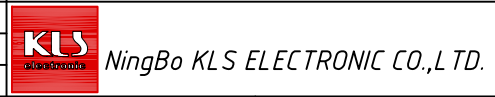
**Mechanical**  
 Operating Temperature:  $-40^{\circ}\text{C} \sim +105^{\circ}\text{C}$   
 Max. Processing Temp:  $230^{\circ}\text{C}$  for 30-60 seconds ( $260^{\circ}\text{C}$  for 10 seconds)

Recommended P.C.B Layout (Top Side)  
 (PCB BOARD TOLERANCE  $\pm 0.05$ )

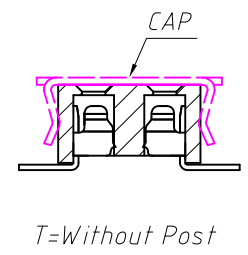
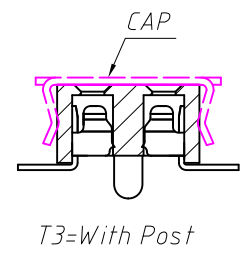
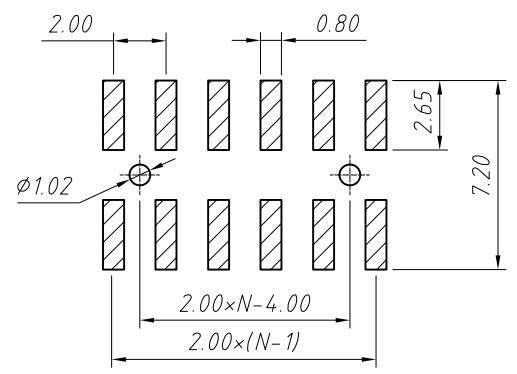
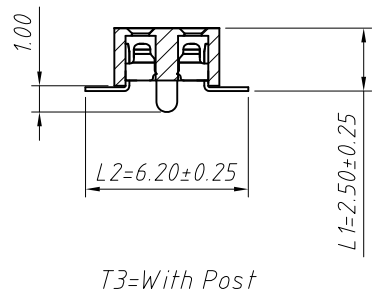
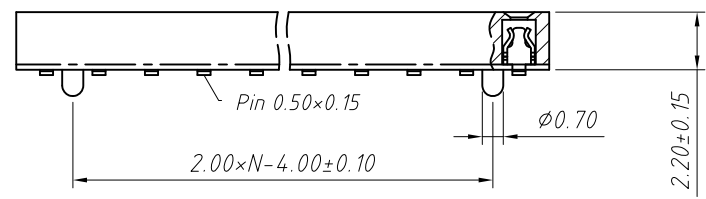
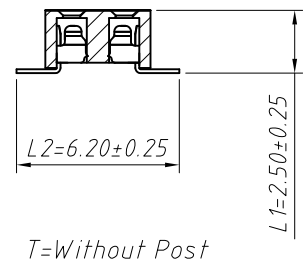
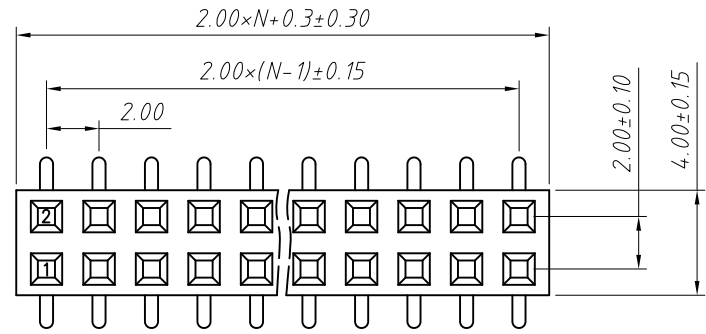
**Order Information:**  
 L-KLS1-208B-2.2-2-XX-S-B

L: RoHS  
 Female Header Series  
 208B: 2.00mm  
 Plastics Height: 2.2mm  
 Per Row: Double layer  
 Pin: No. of Pins (02~80)  
 Type: Straight Pin  
 Material: A=PBT B=PA6T C=LCP

ANGLE TOLERANCE	PROJECTION	Description:	2.0x2.2mm Female Header Double layer, Straight Pin, 2xN Pin
$\pm 3^{\circ}$			
GENERAL TOLERANCE	UNITS	mm	KLS P/N:
x.x $\pm 0.30$	SHEET SIZE	A4	L-KLS1-208B-2.2-2-XX-S-B
x.xx $\pm 0.20$	Draw:	Daniel	2018-07-10
x.xxx $\pm 0.10$	Check:	Daniel	2018-07-10



1 RoHS Compliance



Recommended P.C.B Layout (Top Side)  
(PCB BOARD TOLERANCE ±0.05)

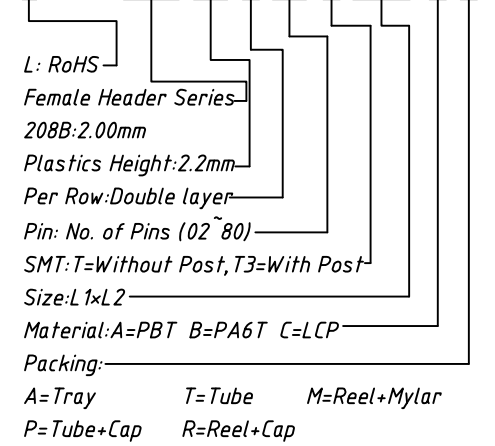
Dimension antitheses list (mm)			
ITEM	L1	L2	Plastic Height
Standard	2.50	6.20	2.20
Nonstandard	---	---	---

Material:  
Standard: PA6T  
Contact: Phosphor Bronze, Au or Sn Over Ni  
Insulator: Polyester, UL94V-0

Electrical Characteristics:  
Rated Current: 1.5AMP  
Contact Resistance: 20mΩ Max  
Withstand Voltage: 500V AC/DC  
Insulator Resistance: 1000MΩ Min

Mechanical  
Operating Temperature: -40°C ~ +105°C  
Max. Processing Temp: 230°C for 30-60 seconds  
(260°C for 10 seconds)

Order Information:  
L-KLS1-208B-2.2-2-XX-T-L1xL2-B-R



ANGLE TOLERANCE	PROJECTION	Description:	2.00mm Female Header Dual Row, SMT, H2.2mm, 2xN Pin	
±3°				
GENERAL TOLERANCE	UNITS	mm	KLS P/N:	L-KLS1-208B-2.2-2-XX-T-L1xL2-B-R
x.x ±0.30	SHEET SIZE	A4		
x.xx ±0.20	Draw:	Daniel	2018-07-10	NingBo KLS ELECTRONIC CO.,LTD.
x.xxx ±0.10	Check:	Daniel	2018-07-10	