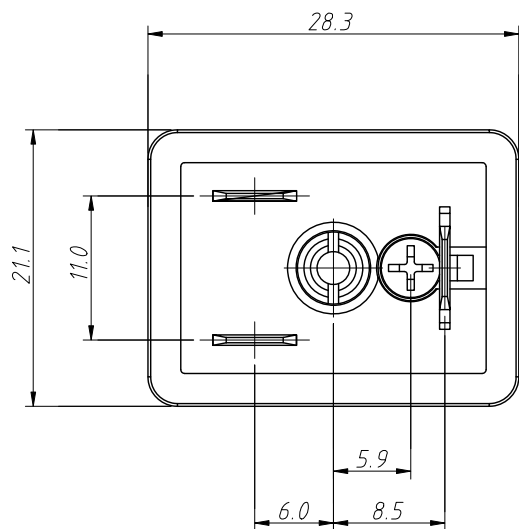
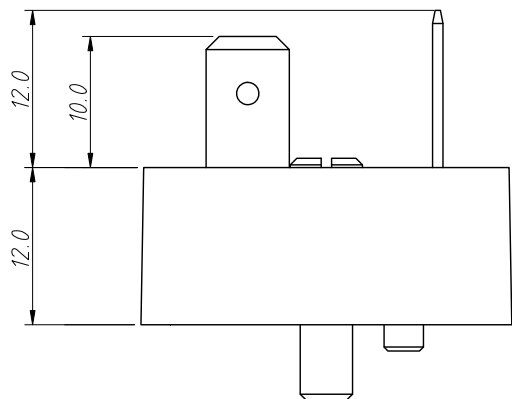


1
RoHS Compliance



Notes:
 Standard: Industrial Standard
 Ambient Temperature: $-30^{\circ}\text{C} \sim +125^{\circ}\text{C}$
 Termination: Soldering
 Pin Dimensions: $6.3 \times 0.8 \text{mm}$
 Housing Color: Black
 Housing Material: PA+GF
 Contact: Brass With
 Tin Plated Or Nickel Plated
 Central Nut: Brass With Nickel Plated
 Rated Voltage: 250V AC/DC
 Rated Impulse voltage: 4000V
 Rated Current: 16A
 Insulation Resistance: $\geq 100 \text{M}\Omega$
 Contact Resistance: $\leq 4 \text{m}\Omega$
 IP Rating: IP65 in locked condition

Order Information



L-KLS15-SVCB04-2+PE

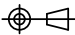
RoHS

Plug Type

Contacts

3+PE, 2+2PE, 2+PE, 3P, 4P

| | |
|------------------|---|
| Contacts | 2+PE |
| Certification |  ECBT8.E364453 |
| Pin layout(Male) |  |

| | | | |
|-------------------|---|--------------|---|
| ANGLE TOLERANCE | PROJECTION | Description: | Solenoid Valve Valve Plug, Base Conn Type B, Rectangular |
| $\pm 3^{\circ}$ |  | | |
| GENERAL TOLERANCE | UNITS | mm | KLS P/N: L-KLS15-SVCB04-2+PE |
| x.x ± 0.30 | SHEET SIZE | A4 | xx |
| x.xx ± 0.20 | Draw: | Daniel | 2023-06-27 |
| x.xxx ± 0.10 | Check: | Daniel | 2023-06-27 |



NingBo KLS ELECTRONIC CO.,L TD.