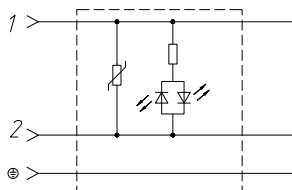


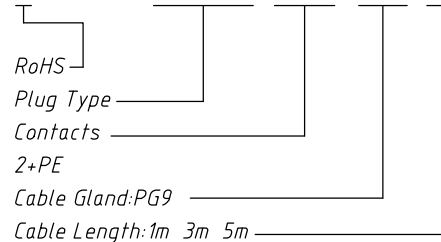
Normal Circuit Diagram



Notes:
Standard:Industrial Standard
Ambient Temperature:
Flexible Installation:-25°C~+85°C
Fixed Installation:-40°C~+85°C
Termination:Soldering
Pin Dimensions:6.3x0.8mm,4.8x0.8mm
Connector Overmold:TPU
Contact Bearer Material:PA+GF
Housing Material:PC
Contact:PS with Silver Plated
Screw:Steel With Zn Plated
Seal:FKM
Gasket:TPU/NBR
Rated Voltage:24V/250V
Rated Impulse Voltage:800V/4000V
Rated Current:8A/10A
Insulation Resistance:≥100MΩ
Contact Resistance:≤4mΩ
IP Rating:IP67 In Locked Condition
Cable Type:PVC Or PUR Cable
Conductor Size:1.5mm² Max

Order Information

L-KLS15-SVCP05-2+PE-PG9-L1M



Contacts	2+PE
Pin layout(Female)	

ANGLE TOLERANCE		PROJECTION	Description:	
±3°			Solenoid Valve, Valve Plug, Type B, Female Field Wirable Assembly , PG9	
GENERAL TOLERANCE		UNITS	mm	KLS P/N:
x.x	±0.30	SHEET SIZE	A4	xx
x.xx	±0.20	Draw:	Daniel	2023-06-27
x.xxx	±0.10	Check:	Daniel	2023-06-27



NingBo KLS ELECTRONIC CO.,L TD.