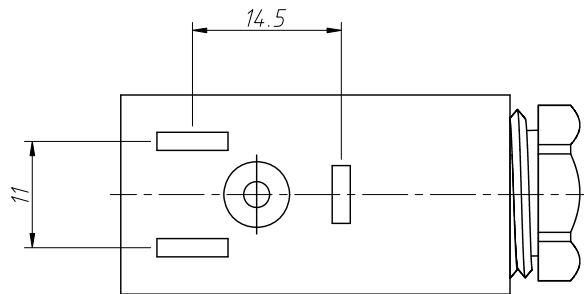
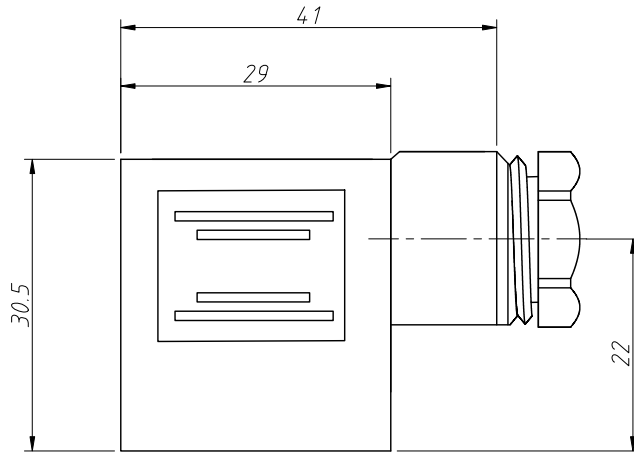
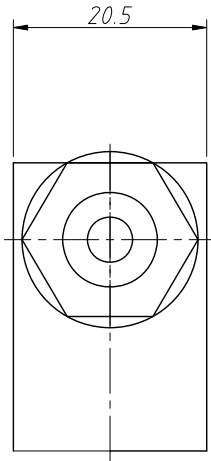


1
RoHS Compliance





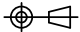
Notes:
 Standard: Industrial Standard
 Ambient Temperature: $-30^{\circ}\text{C} \sim +125^{\circ}\text{C}$
 Termination: Screw
 Pin Dimensions: 6.3x0.8mm, 4.8x0.8mm
 Connector overmold: Black
 Contact Bearer Material: PA+GF
 Housing Material: PA+GF
 Contact: PS with silver plated
 Screw: Steel with Zn plated
 Seal: FKM/NBR
 Gasket: NBR
 Rated Voltage: 250V
 Rated Impulse voltage: 4000V
 Rated Current: 10A
 Insulation Resistance: $\geq 100\text{M}\Omega$
 Contact Resistance: $\leq 4\text{m}\Omega$
 IP Rating: IP65 in locked condition
 Cable Gland: PG9
 Suitable Cables (Dia): 4.5 ~ 7.0mm
 Conductor Size: 1.5mm² Max

Order Information

L-KLS15-SVCP04-2+PE-PG9-B

RoHS
 Plug Type
 Contacts
 2+PE
 Cable Gland: PG9
 Housing:
 A-Opaque B-Transparent

Contacts	2+PE
Certification	 ECBT2.E364453
Pin layout (Female)	

ANGLE TOLERANCE	PROJECTION	Description:	Solenoid Valve, Valve Plug, Type B, Female Field Wirable Assembly, PG9
$\pm 3^{\circ}$			
GENERAL TOLERANCE	UNITS	mm	KLS P/N:
x.x ± 0.30	SHEET SIZE	A4	xx
x.xx ± 0.20	Draw:	Daniel	2023-06-27
x.xxx ± 0.10	Check:	Daniel	2023-06-27



NingBo KLS ELECTRONIC CO., L TD.