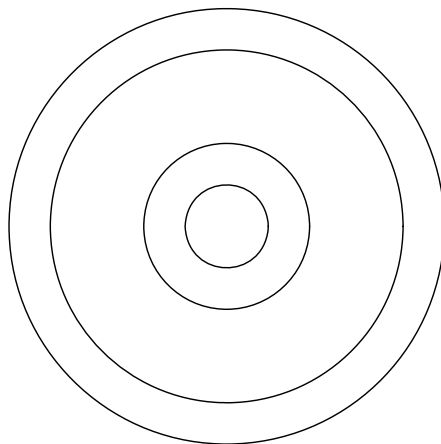
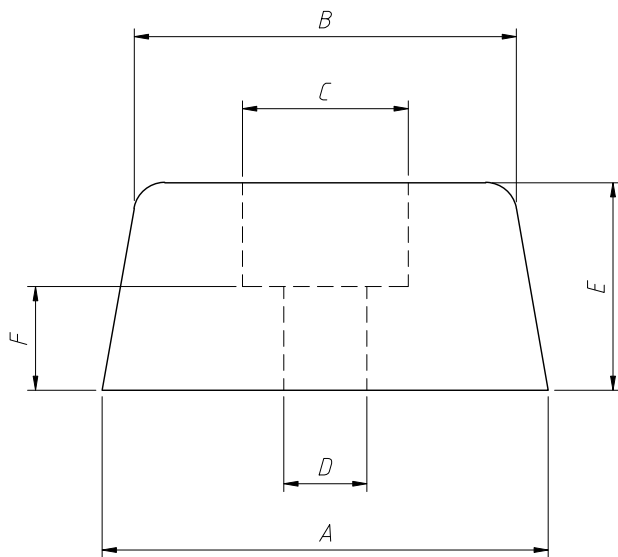


RoHS Compliance



Model	A	B	C	D	E	F	Material
ESN-01	14.8	8.0	6.0	3.0	7.0	3.1	PVC
ESN-02	11.5	8.7	5.6	3.2	7.4	3.3	Rubber
ESN-04	16.0	13.0	6.0	3.0	7.8	3.6	
ESN-05	17.2	16.2	9.0	4.0	7.0	3.0	
ESN-06	20.2	18.4	10.0	3.0	8.0	4.0	PVC
ESN-07	25.0	21.5	8.5	3.3	5.8	2.8	
ESN-08	20.0	15.0	9.2	3.0	10.5	5.5	
ESN-08A	20.0	15.0	9.8	4.0	10.5	5.0	PP
ESN-09	11.0	8.8	6.0	3.5	5.7	2.3	
ESN-13	18.0	13.7	3.5	3.5	9.8	2.7	PVC
ESN-14	28.0	21.2	9.7	3.8	19.8	6.0	PVC

**Technical requirements:**

1. Appearance requirements: No defects such as burrs, sharp edges, shrinkage, etc
2. Usage: The seat cushion of the mechanical shell is fixed with screws, ensuring safety and not falling off
3. Declaration: This drawing is for commission only, and the actual object shall prevail. The actual object shall be the basis confirmed by both parties

ANGLE TOLERANCE	PROJECTION	Description:	Rubber feet	
±3°				
GENERAL TOLERANCE	UNITS	mm	KLS P/N:	L-KLS8-0518-ESN-08A
x.x ±0.30	SHEET SIZE	A4	NingBo KLS ELECTRONIC CO.,L TD.	
x.xx ±0.20	Draw:	Daniel		2023-06-29
x.xxx ±0.10	Check:	Daniel		2023-06-29