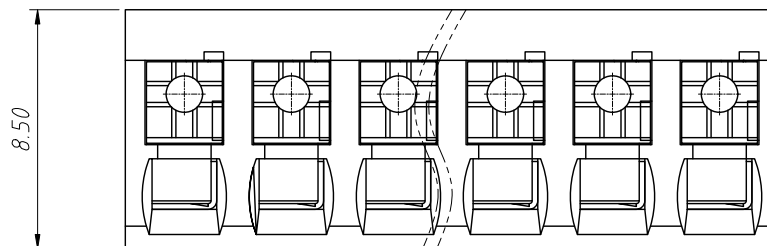
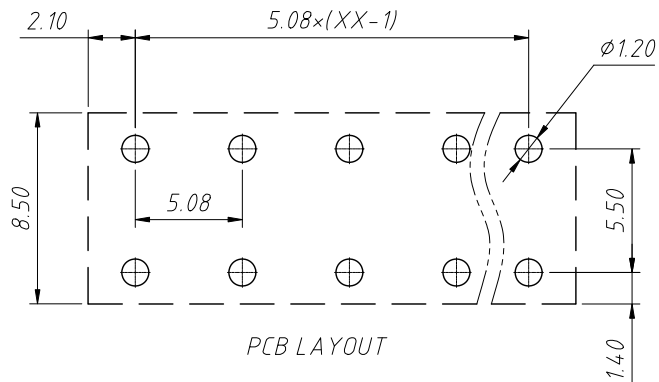


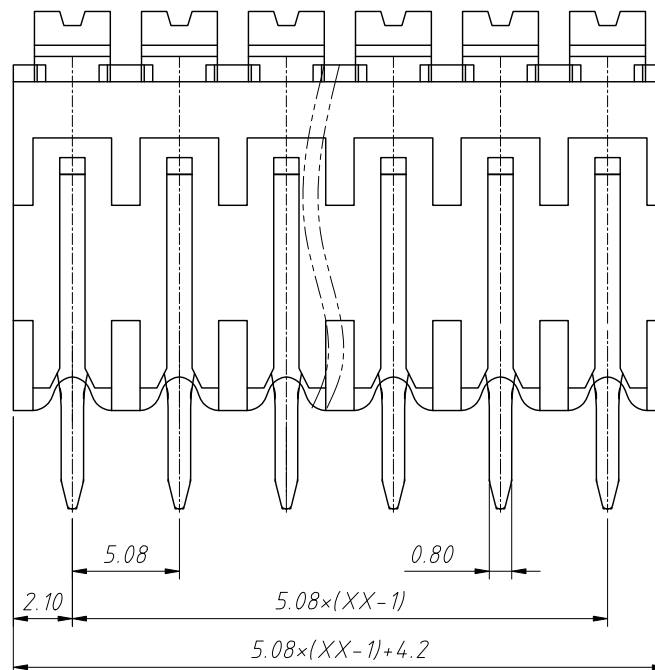
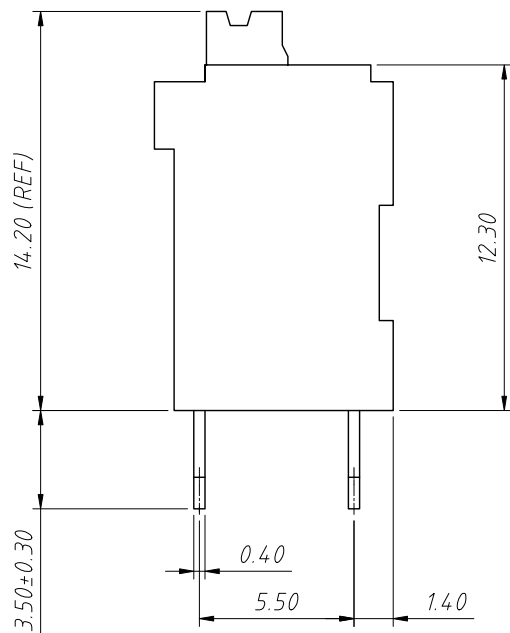
RoHS Compliance



Material:  
Insulation: LCP, UL94V-0  
Contactor: Copper alloy, Sn plated

Electrical:  
Rated Voltage: 300V  
Rated Current: 10A  
Withstanding Voltage: 1600VAC(1min)

Mechanical:  
Stripping Length: 7-8mm  
Pin Dimensions: 0.8x0.4mm  
PCB Hole Diameter:  $\phi 1.20$ mm  
Soldering Temperature: 285°C/10S  
Operating temperature: -40°C to +130°C



Order Information:  
L-KLS2-212V-5.08-XXP-X

L: RoHS  
Terminal Block  
Pitch: 5.08mm  
No.: of 02 ~ 24 Pole  
Color:  
1=Gray 2=Blue 3=Black  
4=Green 5=Orange 6=Red  
7=Transp 8=Yellow 9=White

ANGLE TOLERANCE	PROJECTION	Description:
$\pm 3^\circ$		5.08mm PCB Spring Terminal Block
GENERAL TOLERANCE	UNITS	mm
x.x $\pm 0.30$	SHEET SIZE	A4
x.xx $\pm 0.20$	Draw:	Daniel 2023-05-05
x.xxx $\pm 0.10$	Check:	Daniel 2023-05-05
		KLS P/N: L-KLS2-212V-5.08-XXP-X



NingBo KLS ELECTRONIC CO.,L TD.