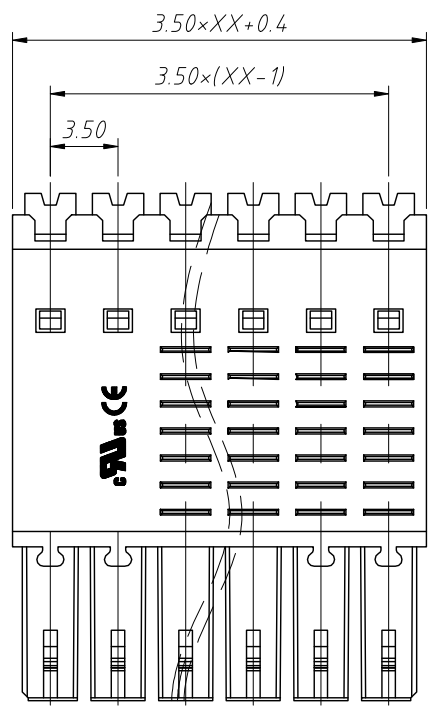
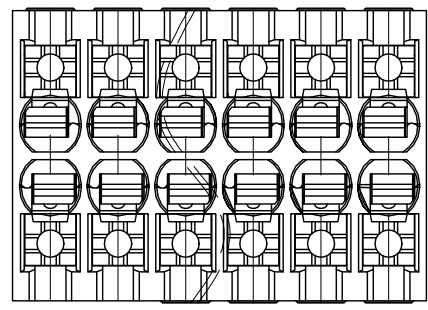
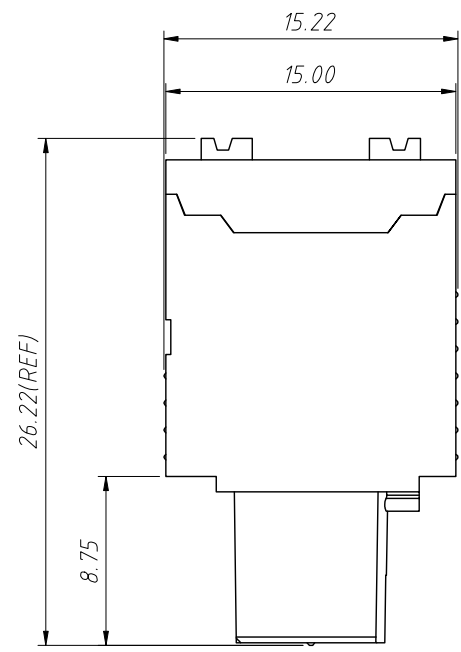


1
RoHS Compliance

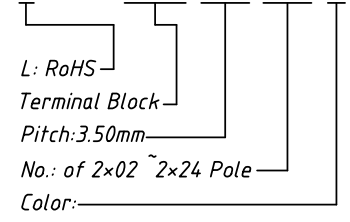


Material:
Insulation: PA66, UL 94V-0
Contactor: Copper alloy, Sn plated

Electrical:
Rated Voltage: 300V
Rated Current: 9.5A
Withstanding Voltage: 1600VAC(1min)
Wire range: 16-26AWG

Mechanical:
Stripping Length: 10-11mm
Operating temperature: -40°C to +105°C

Order Information:
L-KLS2-FMHB-3.50-XXP-X



- 1=Gray 2=Blue 3=Black
- 4=Green 5=Orange 6=Red
- 7=Transp 8=Yellow 9=White

ANGLE TOLERANCE	PROJECTION	Description:	
±3°		3.50mm Pluggable terminal block	
GENERAL TOLERANCE	UNITS	mm	KLS P/N:
x.x ±0.30	SHEET SIZE	A4	L-KLS2-FMHB-3.50-XXP-X
x.xx ±0.20	Draw:	Daniel	2023-05-05
x.xxx ±0.10	Check:	Daniel	2023-05-05

