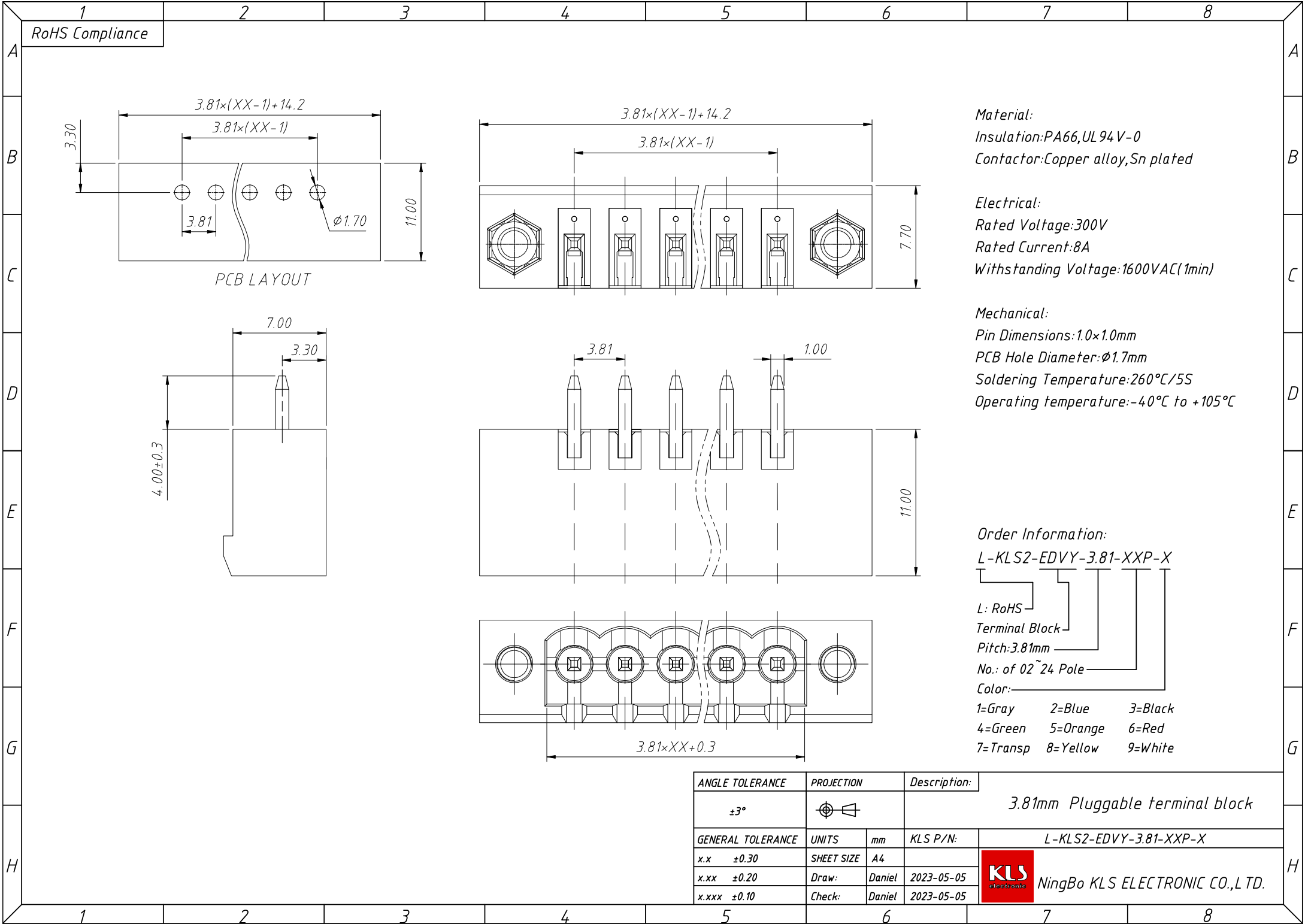


1  
RoHS Compliance



**Material:**  
Insulation: PA66, UL 94 V-0  
Contactor: Copper alloy, Sn plated

**Electrical:**  
Rated Voltage: 300V  
Rated Current: 8A  
Withstanding Voltage: 1600VAC(1min)

**Mechanical:**  
Pin Dimensions: 1.0x1.0mm  
PCB Hole Diameter:  $\phi 1.7$ mm  
Soldering Temperature: 260°C/5S  
Operating temperature: -40°C to +105°C

**Order Information:**  
L-KLS2-EDVY-3.81-XXP-X

L: RoHS  
 Terminal Block  
 Pitch: 3.81mm  
 No.: of 02 ~ 24 Pole  
 Color:

1=Gray    2=Blue    3=Black  
 4=Green    5=Orange    6=Red  
 7=Transp    8=Yellow    9=White

ANGLE TOLERANCE	PROJECTION	Description:	
$\pm 3^\circ$			3.81mm Pluggable terminal block
GENERAL TOLERANCE	UNITS	mm	KLS P/N:
x.x $\pm 0.30$	SHEET SIZE	A4	L-KLS2-EDVY-3.81-XXP-X
x.xx $\pm 0.20$	Draw:	Daniel	2023-05-05
x.xxx $\pm 0.10$	Check:	Daniel	2023-05-05

