

1
RoHS Compliance

2

3

4

5

6

7

8

A

B

C

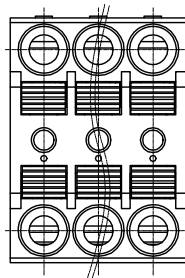
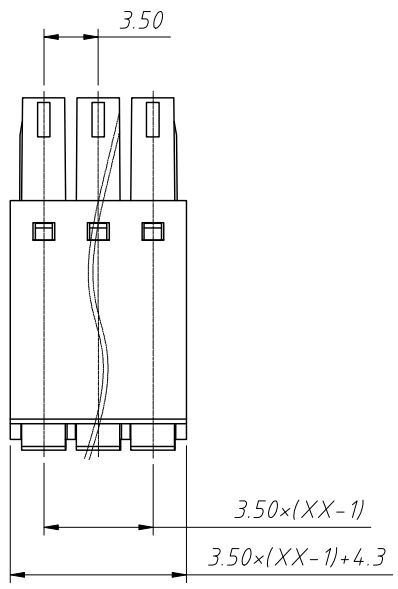
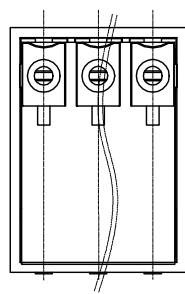
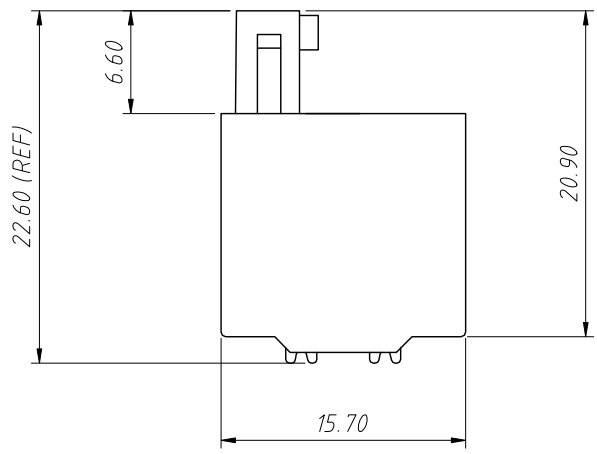
D

E

F

G

H



Material:
 Insulation: PA66, UL 94V-0
 Contactor: Copper alloy, Sn plated

Electrical:
 Rated Voltage: 300V
 Rated Current: 8A
 Withstanding Voltage: 1600VAC(1min)

Mechanical:
 Wire range: 16-24AWG
 Stripping Length: 10-11mm
 Operating temperature: -40°C to +105°C

Order Information:
 L-KLS2-EDGKDH-3.50-XXP-X

L: RoHS
 Terminal Block
 Pitch: 3.50mm
 No.: of 02 ~ 24 Pole
 Color:

1=Gray 2=Blue 3=Black
 4=Green 5=Orange 6=Red
 7=Transp 8=Yellow 9=White

| | | | | |
|-------------------|------------|--------------|---------------------------------|--------------------------|
| ANGLE TOLERANCE | PROJECTION | Description: | 3.50mm Pluggable terminal block | |
| ±3° | | | | |
| GENERAL TOLERANCE | UNITS | mm | KLS P/N: | L-KLS2-EDGKDH-3.50-XXP-X |
| x.x ±0.30 | SHEET SIZE | A4 | | |
| x.xx ±0.20 | Draw: | Daniel | 2023-05-05 | |
| x.xxx ±0.10 | Check: | Daniel | 2023-05-05 | |

NingBo KLS ELECTRONIC CO.,L TD.

1

2

3

4

5

6

7

8