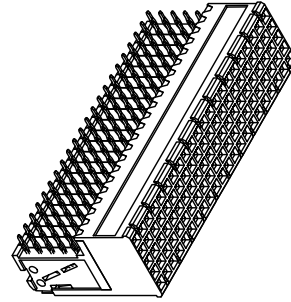
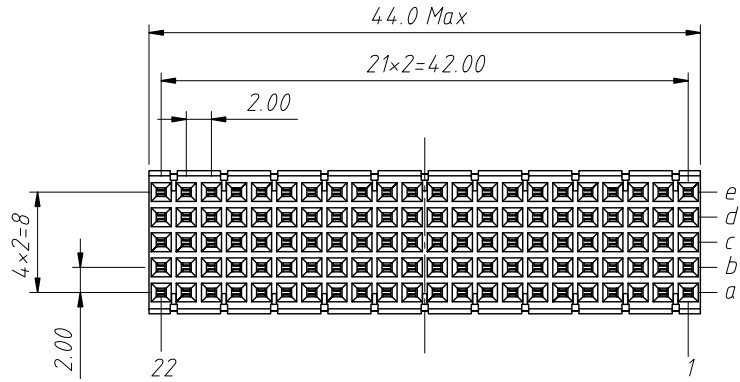
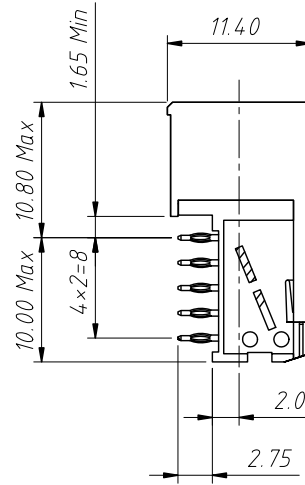
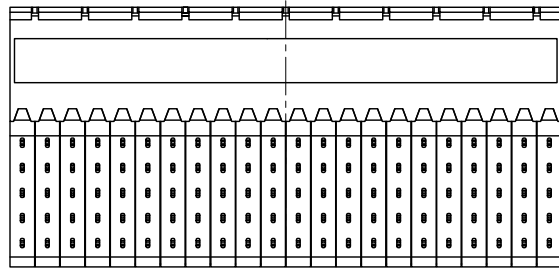


1 RoHS Compliance



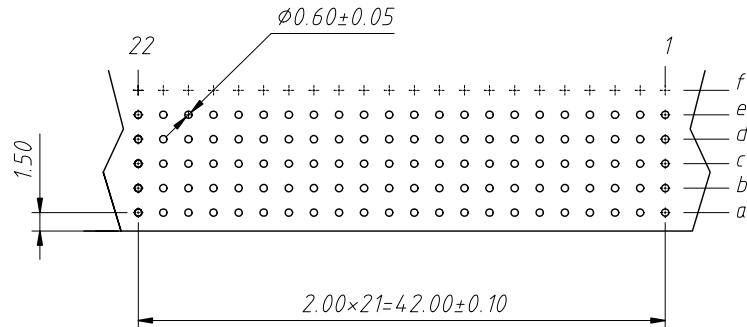
Material:
 Housing: Thermoplastic Polyester Glass
 Filled, UL 94 V-0
 Contacts: Copper Alloy

Electrical Characteristics:
 Current Rating: 1 AMP.
 Dielectric Withstanding Voltage:
 AC 750V For 1 minute
 Insulator Resistance: 10000MΩ min at DC 500V
 Contact Resistance: 20mΩ max. at DC 100mA.
 Operating Temperature: -55°C ~ +125°C



Order Information:
 L-KLS1-HBC-B F-110-0-10
 L: RoHS
 Housing D Type
 M=Male F=Female
 No. of 110 Pins
 Shielded:
 0: None Shielded
 1: With Top Body Shielded
 Plating: 10=Au 10u"

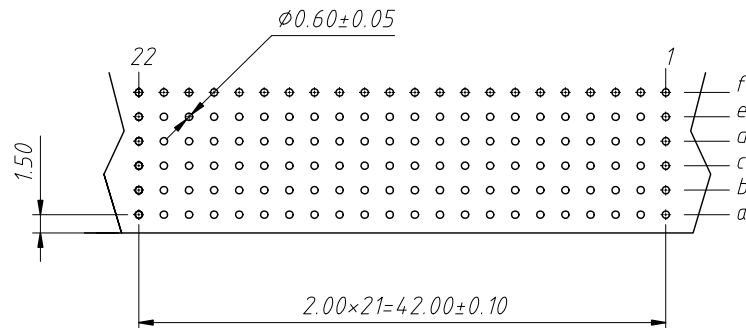
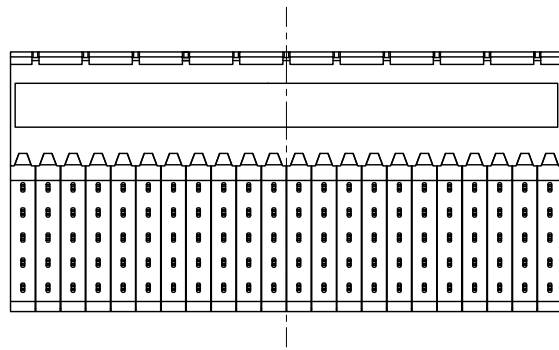
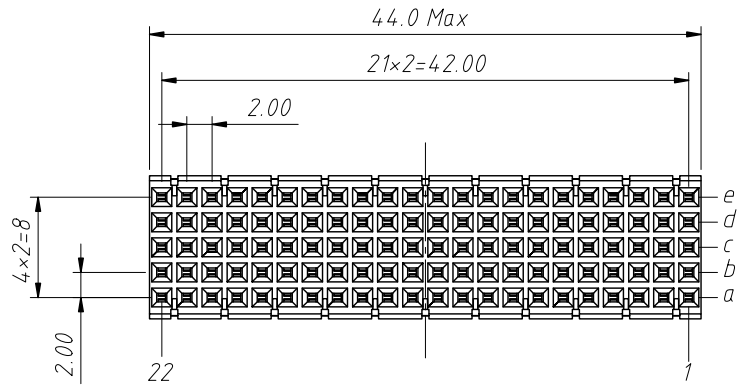
None Shielded



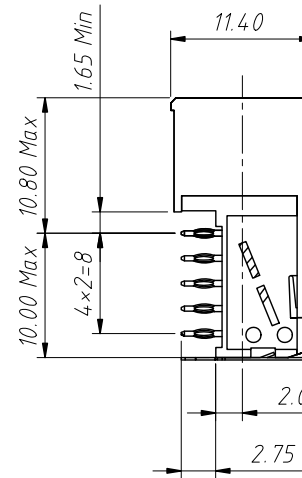
Recommended PCB Layout
 Tolerance: ±0.05mm

ANGLE TOLERANCE	PROJECTION	Description:	2mm Hard Metric Connector 110 Pos Press-Fit B22 Female	
±3°				
GENERAL TOLERANCE	UNITS	mm	KLS P/N: L-KLS1-HBC-BF-110-0-10	
x ±0.5	SHEET SIZE	A4	NingBo KLS ELECTRONIC CO.,L TD.	
x.x ±0.25	Draw:	Daniel		2023-05-10
x.xx ±0.15	Check:	Daniel		2023-05-10

1 RoHS Compliance



Recommended PCB Layout
Tolerance: $\pm 0.05\text{mm}$



With Top Body Shielded

Material:

Housing: Thermoplastic Polyester Glass

Filled, UL 94V-0

Contacts: Copper Alloy

Electrical Characteristics:

Current Rating: 1 AMP.

Dielectric Withstanding Voltage:

AC 750V For 1 minute

Insulator Resistance: 10000M Ω min at DC 500V

Contact Resistance: 20m Ω max. at DC 100mA.

Operating Temperature: $-55^{\circ}\text{C} \sim +125^{\circ}\text{C}$

Order Information:

L-KLS1-HBC-B F-110-1-10

L: RoHS

Housing D Type

M=Male F=Female

No. of 110 Pins

Shielded:

0:None Shielded

1:With Top Body Shielded

Plating: 10=Au 10u"

ANGLE TOLERANCE	PROJECTION	Description:	2mm Hard Metric Connector 110 Pos Press-Fit B22 Female	
$\pm 3^{\circ}$				
GENERAL TOLERANCE	UNITS	mm	KLS P/N: L-KLS1-HBC-BF-110-1-10	
x ± 0.5	SHEET SIZE	A4	NingBo KLS ELECTRONIC CO.,LTD.	
x.x ± 0.25	Draw:	Daniel		2023-05-12
x.xx ± 0.15	Check:	Daniel		2023-05-12