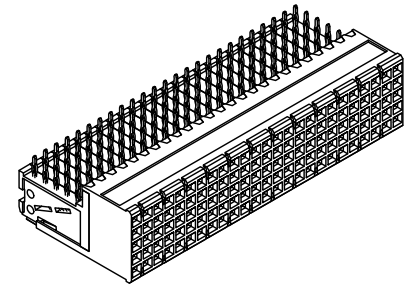
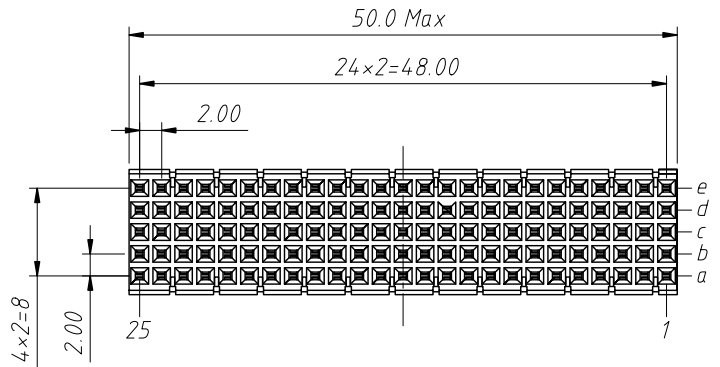
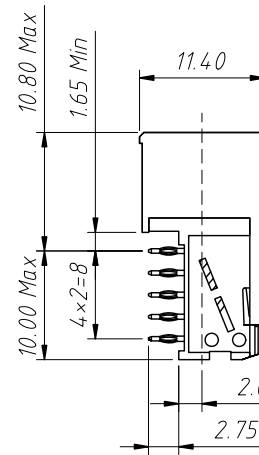
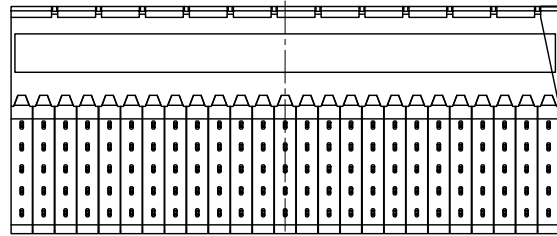


RoHS Compliance



Material:
 Housing: Thermoplastic Polyester Glass
 Filled, UL 94 V-0
 Contacts: Copper Alloy

Electrical Characteristics:
 Current Rating: 1 AMP.
 Dielectric Withstanding Voltage:
 AC 750V For 1 minute
 Insulator Resistance: 10000M Ω min at DC 500V
 Contact Resistance: 20m Ω max. at DC 100mA.
 Operating Temperature: -55 $^{\circ}$ C ~ +125 $^{\circ}$ C

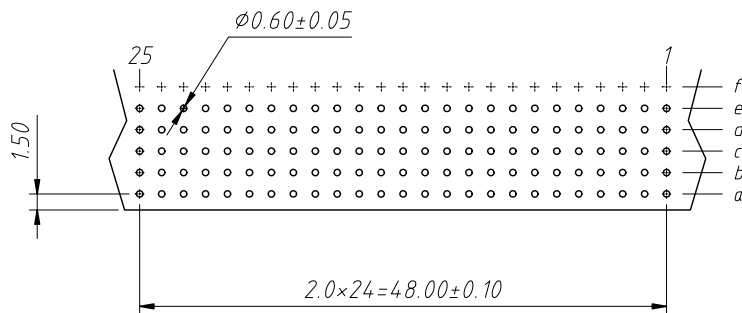


Order Information:

L-KLS1-HBC-B F-125-0-10

L: RoHS
 Housing D Type
 M=Male F=Female
 No. of 125 Pins
 Shielded:
 0: None Shielded
 1: With Top Body Shielded
 Plating: 10=Au 10u"

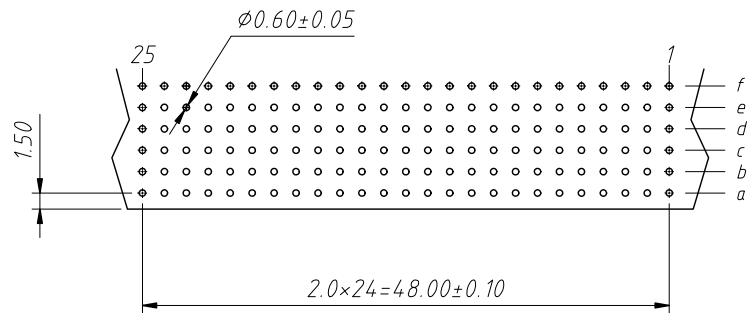
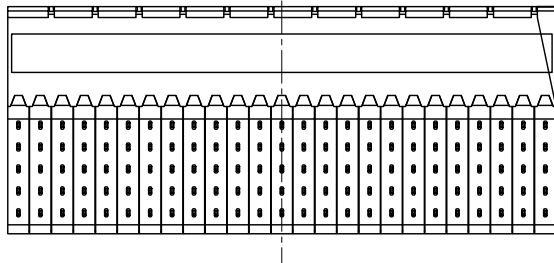
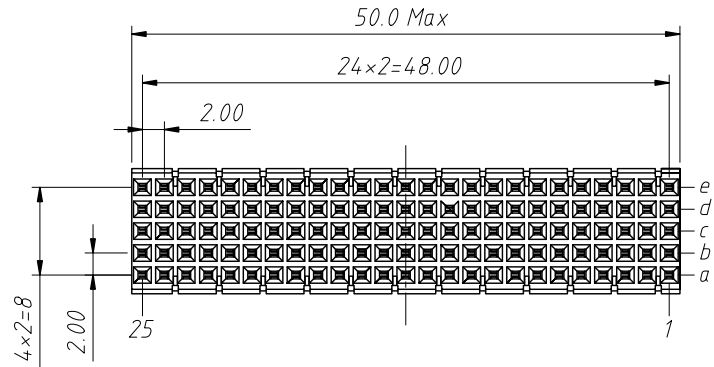
None Shielded



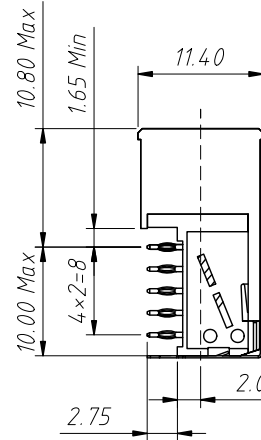
Recommended PCB Layout
 Tolerance: ± 0.05 mm

| | | | | |
|-------------------|------------|--------------|---|------------|
| ANGLE TOLERANCE | PROJECTION | Description: | 2mm Hard Metric Connector 125 Pos Press-Fit B25 Female | |
| $\pm 3^{\circ}$ | | | | |
| GENERAL TOLERANCE | UNITS | mm | KLS P/N: L-KLS1-HBC-BF-125-0-10 | |
| x ± 0.5 | SHEET SIZE | A4 | NingBo KLS ELECTRONIC CO.,LTD. | |
| x.x ± 0.25 | Draw: | Daniel | | 2023-05-10 |
| x.xx ± 0.15 | Check: | Daniel | | 2023-05-10 |

1 RoHS Compliance



Recommended PCB Layout
Tolerance: ±0.05mm



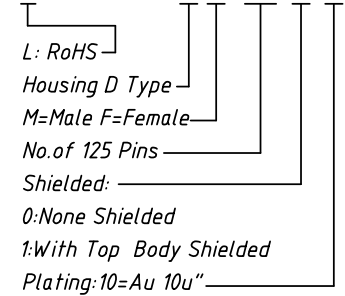
With Top Body Shielded

Material:
Housing: Thermoplastic Polyester Glass Filled, UL 94 V-0
Contacts: Copper Alloy

Electrical Characteristics:
Current Rating: 1 AMP.
Dielectric Withstanding Voltage:
AC 750V For 1 minute
Insulator Resistance: 10000M Ω min at DC 500V
Contact Resistance: 20m Ω max. at DC 100mA.
Operating Temperature: -55°C ~ +125°C

Order Information:

L-KLS1-HBC-B F-125-1-10



| | | | |
|-------------------|------------|--------------|------------------------------|
| ANGLE TOLERANCE | PROJECTION | Description: | 2mm Hard Metric Connector |
| ±3° | | | 125 Pos Press-Fit B25 Female |
| GENERAL TOLERANCE | UNITS | mm | KLS P/N: |
| x ±0.5 | SHEET SIZE | A4 | L-KLS1-HBC-BF-125-1-10 |
| x.x ±0.25 | Draw: | Daniel | 2023-05-10 |
| x.xx ±0.15 | Check: | Daniel | 2023-05-10 |



NingBo KLS ELECTRONIC CO.,LTD.