

1 RoHS Compliance

Power Segment			
PIN NO.	Type	Name	Type
P1	V3.3	P9	V5
P2	V3.3	P10	Ground
P3	V3.3	P11	Ready Led
P4	Ground	P12	Ground
P5	Ground	P13	V12
P6	Ground	P14	V12
P7	V5	P15	V12
P8	V5		

Signal Segment			
Pin NO.	Type	Name	Type
S1	Signal Ground	S8	Signal Ground
S2	TP+	S9	TS+
S3	TP-	S10	TS-
S4	Signal Ground	S11	Signal Ground
S5	RP-	S12	RS-
S6	RP+	S13	RS+
S7	Signal Ground	S14	Signal Ground

Notes:

1.Material:

Housing:LCP+50%G.F,UL94V-0, Black

Contact:Phosphor Bronze

Gold Plating On Contact Area

Tin (100u"Min.) Plating On Solder Tail

Ni (40u"Min.) Under Plating Overall

Harpoon:Brass

Tin Plating(100u"Min.)

Over Nickel(40u"Min.).

2.Mechanical:

Insertion Force:25N Max

Withdrawal Force:5N Min

Durability:500 Cycles

3.Electrical:

Current Rating:1.5 Ampere Per Contact

Contact Resistance:30 mΩ Max.

Insulation Resistance:1000 MΩ Min.

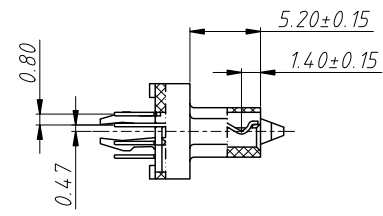
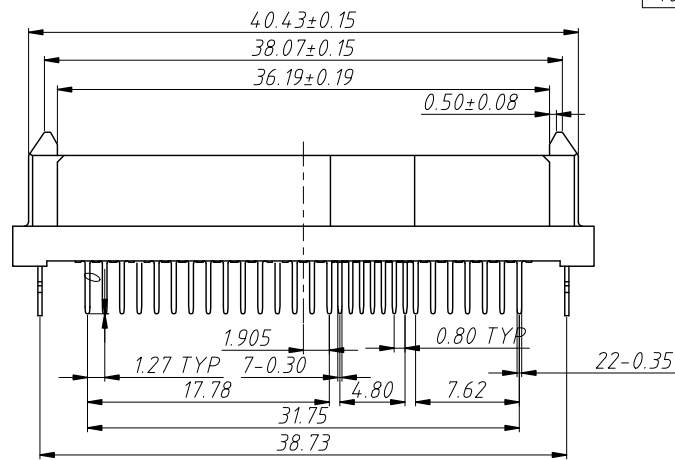
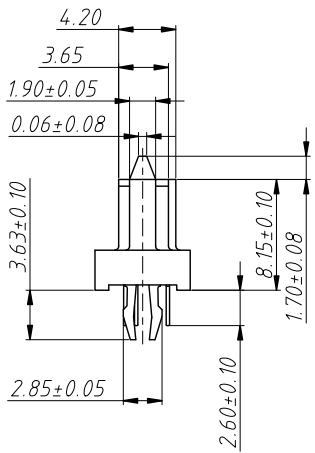
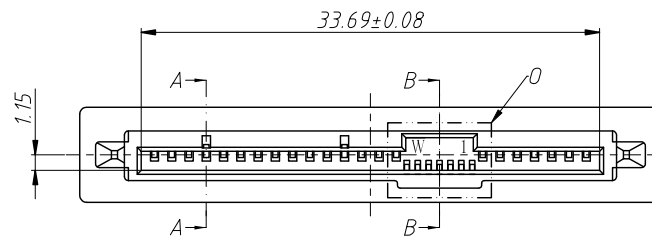
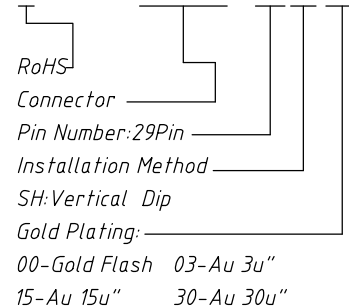
Dielectric Withstanding Voltage:500 VAC

4.Environmental:

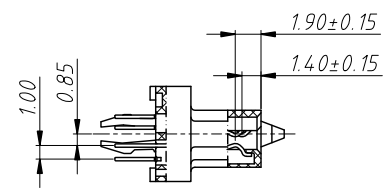
Operating Temperature:0°C ~ +55°C

Order Information

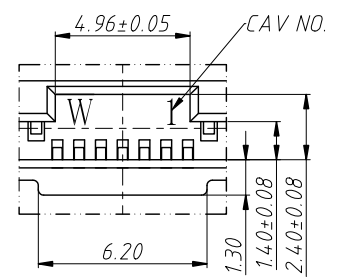
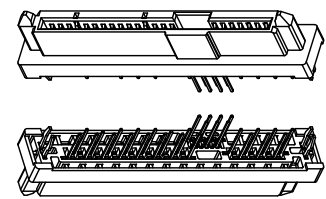
L-KLS1-SAS005-29SHxx



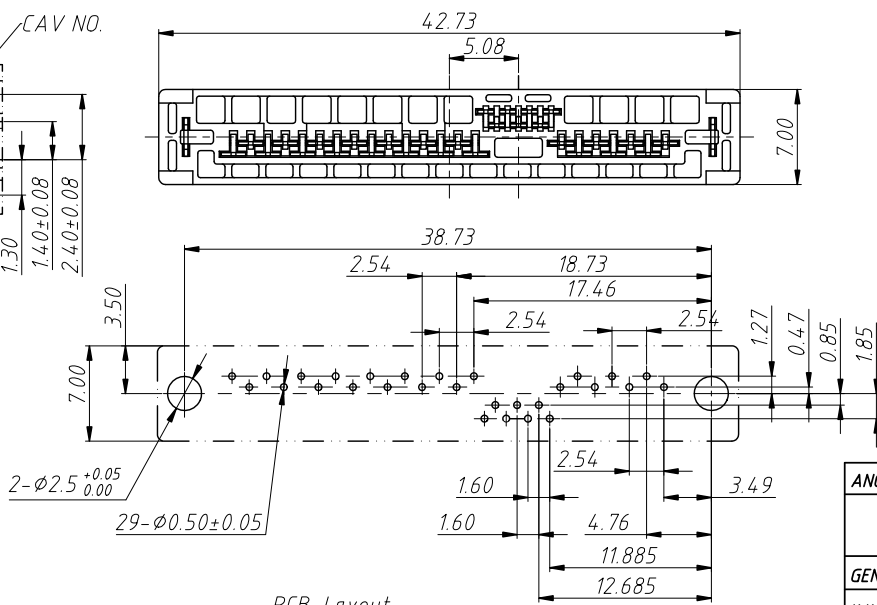
Section A-A



Section B-B



Detail O



PCB Layout
T=1.57mm

ANGLE TOLERANCE	PROJECTION	Description:
±3°		
GENERAL TOLERANCE	UNITS	mm
x.x ±0.30	SHEET SIZE	A4
x.xx ±0.20	Draw:	Daniel
x.xxx ±0.10	Check:	Daniel

Description:	KLS P/N:
SAS-29 PIN, Vertical, DIP Type (Double Row)	L-KLS1-SAS005-29SHxx
NingBo KLS ELECTRONIC CO.,L TD.	