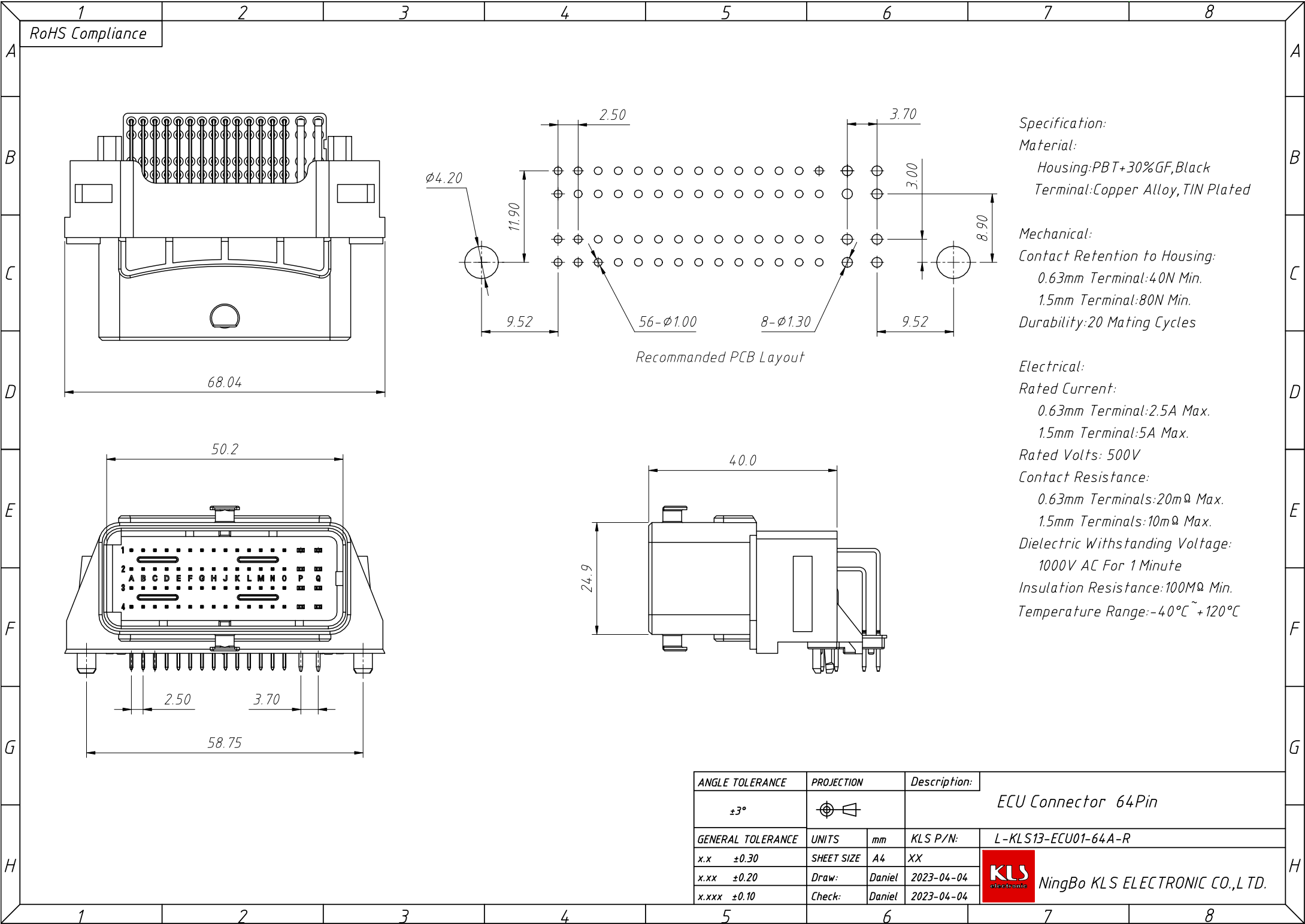


1
RoHS Compliance



Specification:
Material:
Housing:PBT+30%GF,Black
Terminal:Copper Alloy,TIN Plated

Mechanical:
Contact Retention to Housing:
0.63mm Terminal:40N Min.
1.5mm Terminal:80N Min.
Durability:20 Mating Cycles

Electrical:
Rated Current:
0.63mm Terminal:2.5A Max.
1.5mm Terminal:5A Max.
Rated Volts: 500V
Contact Resistance:
0.63mm Terminals:20m Ω Max.
1.5mm Terminals:10m Ω Max.
Dielectric Withstanding Voltage:
1000V AC For 1 Minute
Insulation Resistance:100M Ω Min.
Temperature Range:-40 $^{\circ}$ C ~ +120 $^{\circ}$ C

ANGLE TOLERANCE	PROJECTION	Description:		
$\pm 3^{\circ}$		ECU Connector 64Pin		
GENERAL TOLERANCE	UNITS	mm	KLS P/N:	L-KLS13-ECU01-64A-R
x.x ± 0.30	SHEET SIZE	A4	XX	NingBo KLS ELECTRONIC CO.,L TD.
x.xx ± 0.20	Draw:	Daniel	2023-04-04	
x.xxx ± 0.10	Check:	Daniel	2023-04-04	