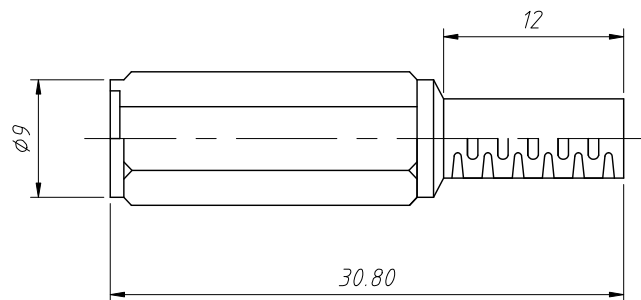
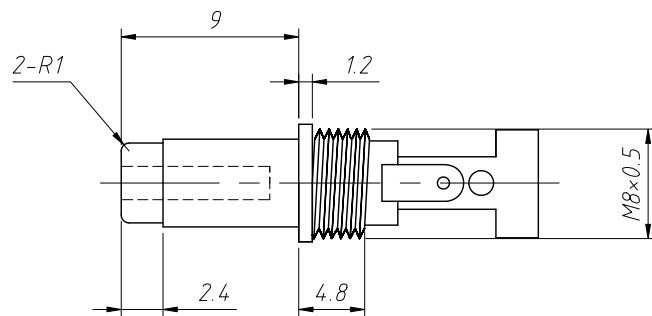
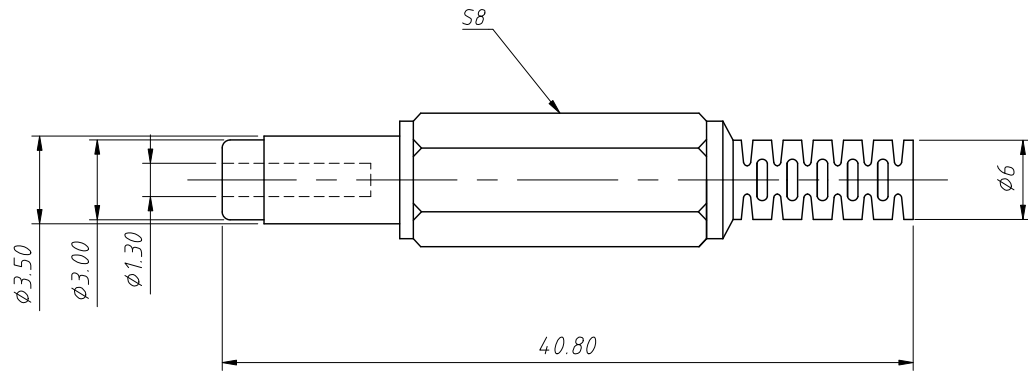


1
RoHS Compliance



Notes:

1.Material:

Housing Material: PBT or PA66

Center Pin Material: Brass

2.Electric:

Contact Resistance: 0.03 Ω , Max

Insulation Resistance: 100M Ω , Min

Pressure: AC500V (50Hz) / 1 minute

Rated Load: DC30V, 1.0A

Actuating Force: 3 ~ 20N

Life: 5000 times

Operating Temperature: -30 $^{\circ}$ C ~ 70 $^{\circ}$ C

ANGLE TOLERANCE	PROJECTION	Description:	DC Power Plug	
$\pm 3^{\circ}$				
GENERAL TOLERANCE	UNITS	mm	KLS P/N:	L-KLS1-DCP-09-1.3A
x.x ± 0.30	SHEET SIZE	A4	XX	NingBo KLS ELECTRONIC CO.,L TD.
x.xx ± 0.20	Draw:	Daniel	2023-04-18	
x.xxx ± 0.10	Check:	Daniel	2023-04-18	