

1
RoHS Compliance

2

3

4

5

6

7

8

A

B

C

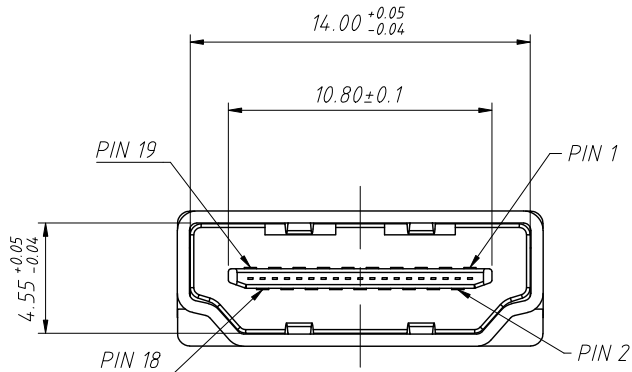
D

E

F

G

H



Order Information

L-KLS1-287-1-N-1

RoHS

Shell Material:
1-Brass 2-SPCC

Shell Plate:

N=Nickel G=Gold

Terminal Plate:

1 = 1u" 3 = 3u" 5 = 5u"

10 = 10u" 15 = 15u" 30 = 30u"

Specification

1.Material:

Housing: Thermoplastics High Temp LCP+Glassfiber Black Color UL 94 V-0

Contact: Copper Alloy, T=0.20mm

Shell: Copper Alloy(SPCC), T=0.50mm

2.Plating:

Contact: 1~30u" Gold/Tin Plating On Contact Area 100u" Min.

Tin Plating On Solder tails 50u" Min. Nickel UnderPlating Over All

Shell: 80u", Nickel UnderPlating Over All

3.Electrical:

Contact Current Rating: 0.5 A

Dielectric Withstanding Voltage: 300V AC

Insulation Resistance: a. Mate 100MΩ Min At 500V/DC

b. Unmate 10MΩ Min At 150V/DC

Contact Resistance: 30mΩ Max

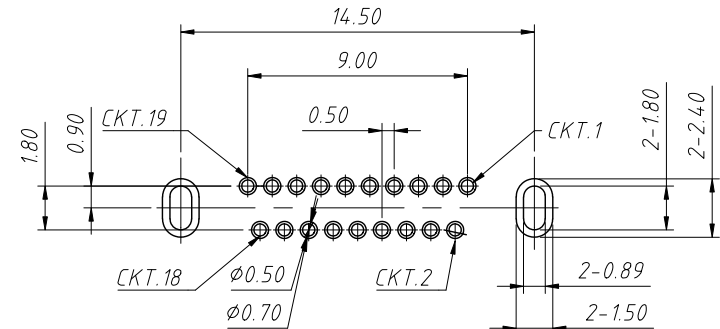
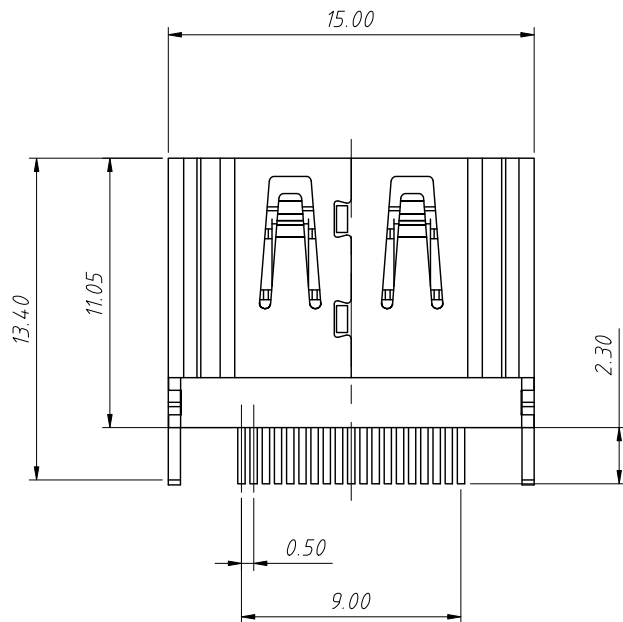
Temperature Range: -20° C To +85° C

4.Mechanical:

Mating Force: 44.1N Max

Unmating Force: 9.8N Min: 39.2N Max

Durability: 5000 Cycles



Recommended PCB Layout
Tolerance: ±0.05mm

ANGLE TOLERANCE	PROJECTION	Description:	Harpoon Foot Shrapnel HDMI A Type 180°DIP	
±3°				
GENERAL TOLERANCE	UNITS	mm	KLS P/N:	L-KLS1-287-1-N-1
x.x ±0.30	SHEET SIZE	A4	XX	NingBo KLS ELECTRONIC CO.,L TD.
x.xx ±0.20	Draw:	Daniel	2023-04-17	
x.xxx ±0.10	Check:	Daniel	2023-04-17	

1

2

3

4

5

6

7

8

A

B

C

D

E

F

G

H