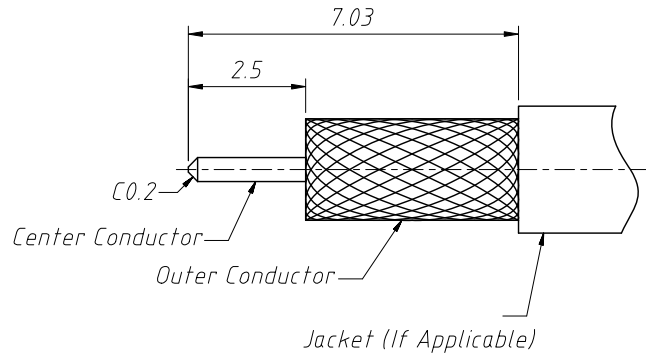


1 RoHS Compliance



RECOMMENDED CABLE STRIPPING DIMS

**Material:**

Body: Brass, Gold Plating

Insulator: PTFE, Natural

Contact: Ber. Copper, Gold Plating

Lock Washer: Stainless Steel, Passivated

HEX Nut: Stainless Steel, Passivated

**Electrical:**

Impedance: 50Ω

Frequency Range: 0-6 GHz

VSWR (Return Loss): 1.15 Max. DC-12 GHz 1.25 Max. 12-18 GHz 1.30 Max. 18-26.5 GHz

D.W.V: 1000 VRMS. MIN.

**Mechanical:**

Durability: 500 Cycles Min.

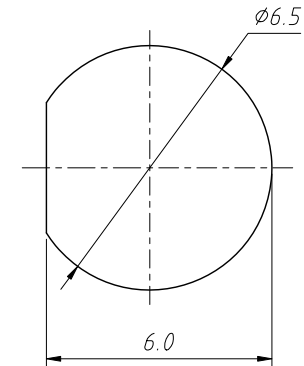
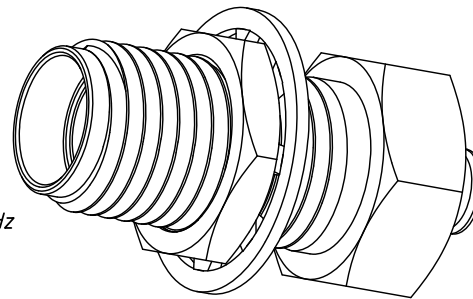
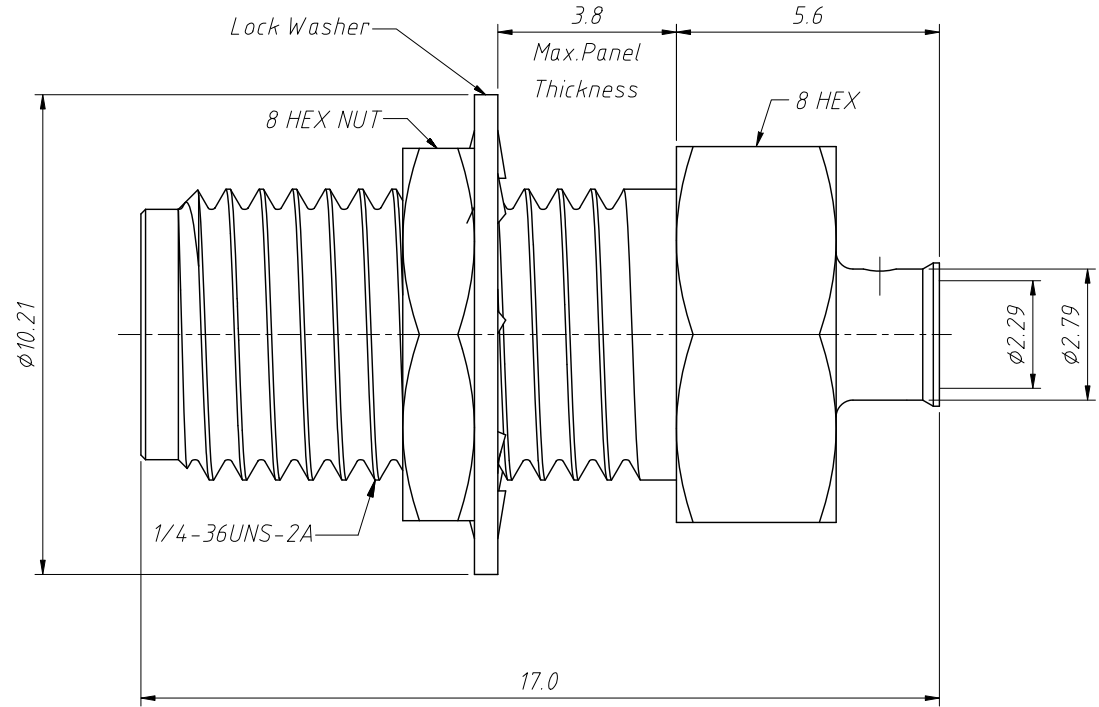
Temperature Range: -65°C to +165°C

**Cable Assembly Instructions:**

Trim Cable As Show N

Insert Cable Center Conductor Into Connector

And Solder Body To The Outer Conductor.



RECOMMENDED MOUNTING HOLE

ANGLE TOLERANCE	PROJECTION	Description:	Panel Mount SMA Cable Connector Straight (Jack, Female, 50Ω)	
±3°				
GENERAL TOLERANCE	UNITS	mm	KLS P/N:	L-KLS1-SMA129
x.x ±0.30	SHEET SIZE	A4		
x.xx ±0.20	Draw:	Daniel	2020-11-11	NingBo KLS ELECTRONIC CO.,L.TD.
x.xxx ±0.10	Check:	Daniel	2020-11-11	