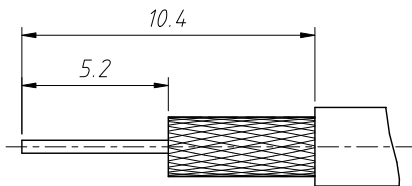
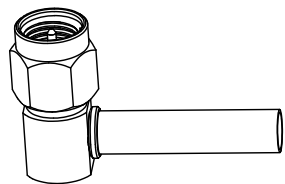
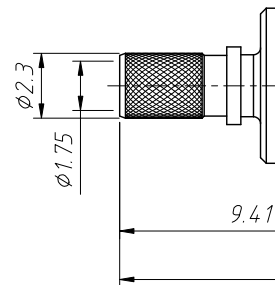
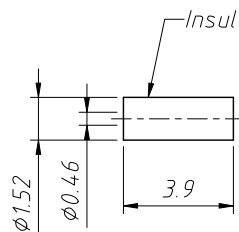
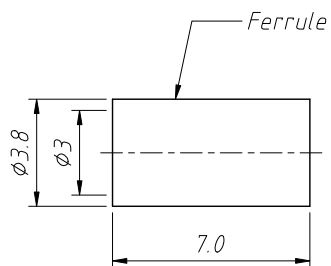
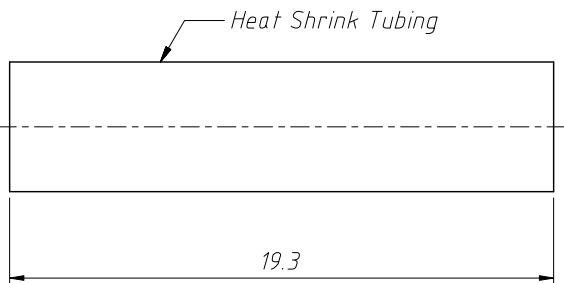
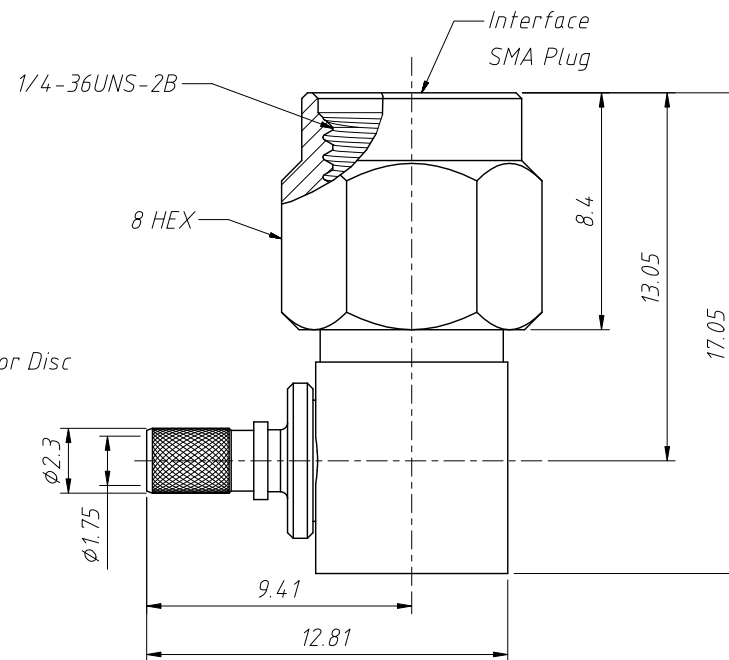


1  
RoHS Compliance



Recommended Cable Stripping Dims

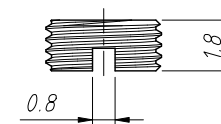


**Electrical:**  
Impedance:50Ω  
Frequency Range:0-6 GHz  
VSWR:1.10 (-26dB) Max  
1.13 (-24dB) Max  
Dielectric Withstanding Voltage:500 VRMS . Min  
**Mechanical:**  
Durability:500 Cycles Min.  
Temperature Range:-65°C to +165°C

**Material:**  
Ferrule:Copper,Nickel Plating  
Body:Brass,Nickel Plating  
Contact:Brass,Gold Plating  
Retainer Ring:SUS 304 ,Natural  
Gasket:Silicon Rubber,Red  
Insulator:PTFE,Natural  
Insulator Disc:Ultem 1000,Natural

- Instructions:**  
1.Contact Pin To SOLDER  
2.Hand Tighten Cap After Soldering  
3.Crimp Ferrule With HEX

- Packing:**  
Quantity:Single Pack  
Marking:Bag To Be Marked



ANGLE TOLERANCE	PROJECTION	Description:	SMA Cable Connector Right Angle (Plug, Male,50Ω)	
±3°				
GENERAL TOLERANCE	UNITS	mm	KLS P/N:	L-KLS1-SMA093
x.x ±0.30	SHEET SIZE	A4		
x.xx ±0.20	Draw:	Daniel	2020-11-11	NingBo KLS ELECTRONIC CO.,L TD.
x.xxx ±0.10	Check:	Daniel	2020-11-11	