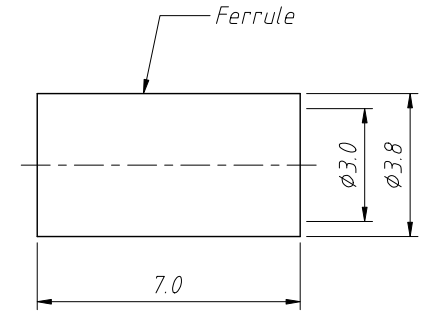
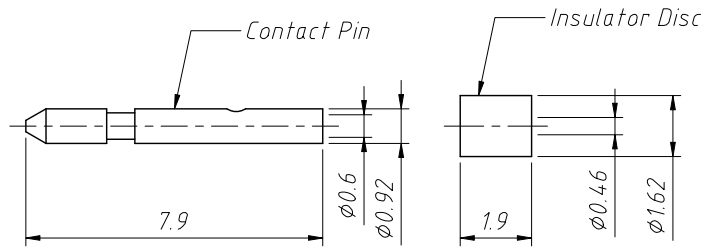
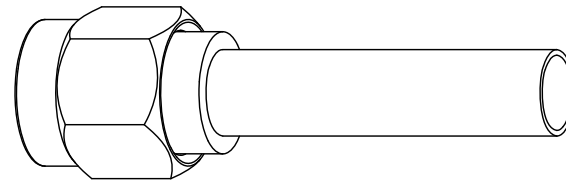
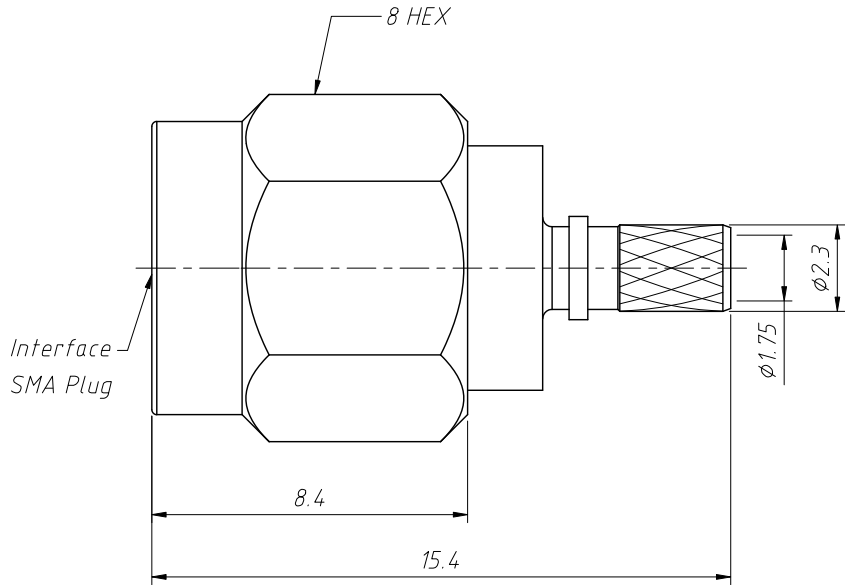
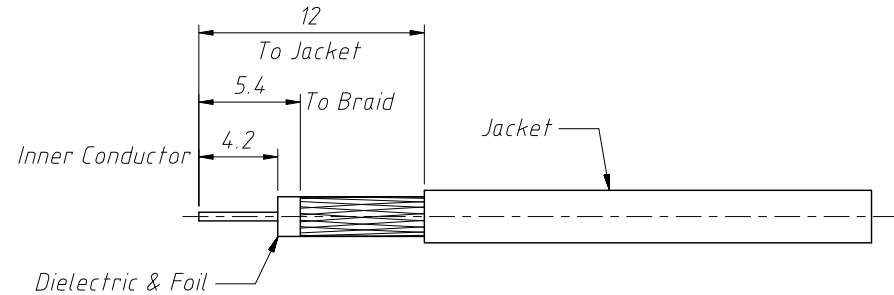


1 RoHS Compliance

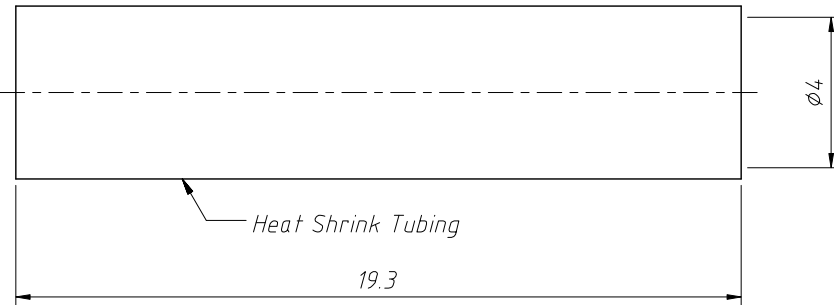
2 Cable Entry Dimensions



Packing:
Quantity: Single Pack
Marking: Bag To Be Marked



Recommended Cable Stripping Dims



Material:
Body: Brass, Gold Plating
Shell: Brass, Gold Plating
Contact Pin: Brass, Gold Plating
Insulator: PTFE, Natural
Insulator Disc: Ultem, Natural
Retainer Ring: SUS 304, Natural
Gasket: Silicon Rubber, Red
Ferrule: Copper, Nickel Plating
Heat Shrink Tubing: Polyolefin, Black

Electrical:
Impedance: 50Ω
Frequency Range: 0-6 GHz
VSWR: 1.10 (-26dB)
1.20 (-20dB)
Dielectric Withstanding Voltage: 500 VRMS . Min
Mechanical:
Durability: 500 Cycles Min.
Temperature Range: -65°C to +165°C

Cable Assembly Instructions:

Trim Cable As Shown Taking Care To Not Damage The Foil
Slide Insulator Disc, Ferrule And Heat Shrink Tube Onto Cable
Solder Contact To Cable Center Conductor
Insert Cable And Contact Into Connector Foil Is A Slip Fit Into 1.75 Body Diameter
Crimp Ferrule With HEX

ANGLE TOLERANCE	PROJECTION	Description:	SMA Cable Connector Straight (Plug, Male, 50Ω)	
±3°				
GENERAL TOLERANCE	UNITS	mm	KLS P/N:	L-KLS1-SMA092
x.x ±0.30	SHEET SIZE	A4		
x.xx ±0.20	Draw:	Daniel	2020-11-11	NingBo KLS ELECTRONIC CO.,L TD.
x.xxx ±0.10	Check:	Daniel	2020-11-11	