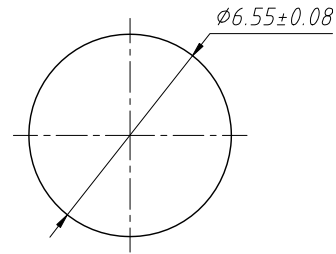
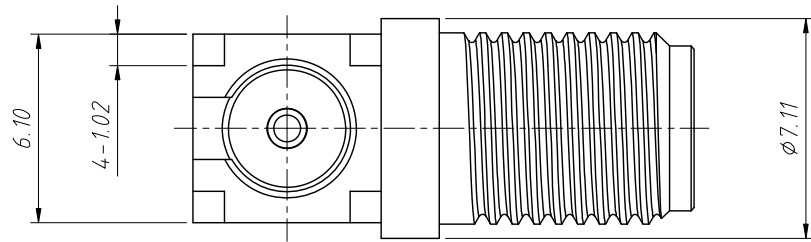
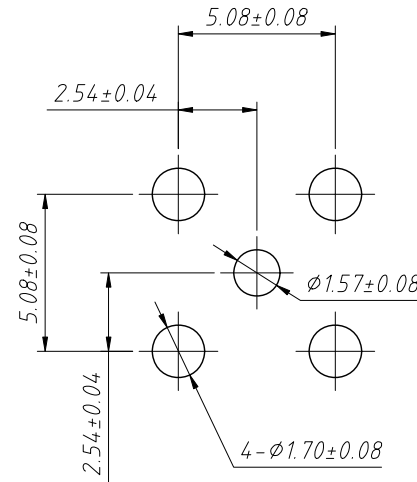
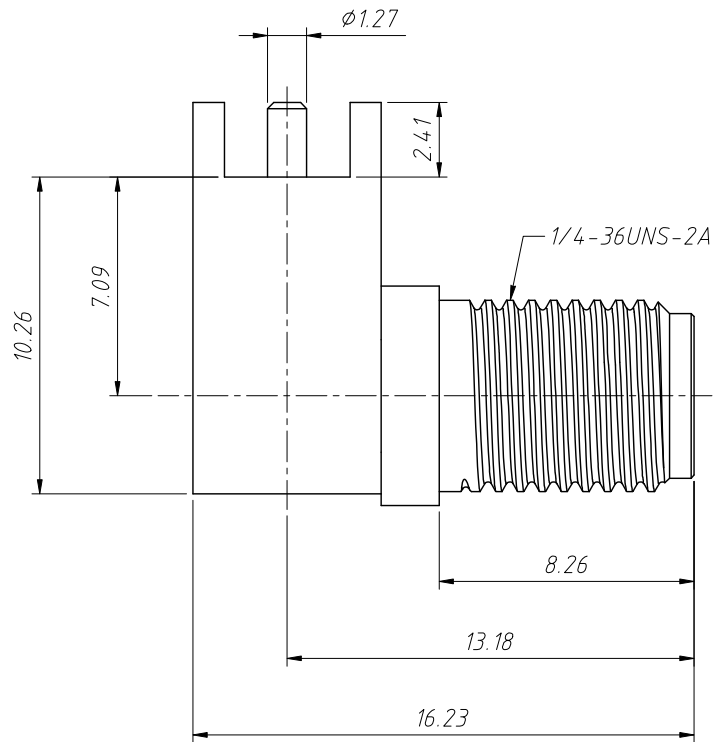


1 RoHS Compliance



Recommended Mounting Hole



PCB Mounting Hole

Material:

Housing With Body: Brass, Gold Plating
 Contact Pin: Ber. Copper, Gold Plating
 Insulator: PTFE, Natural

Electrical Specifications:

Impedance: 50Ω
 Frequency Range: 0-6 GHz
 Dielectric Withstanding Voltage: 1000 VRMS, Min

Mechanical Specifications:

Durability: 500 Cycles Min.
 Temperature Range: -65°C to +165°C

ANGLE TOLERANCE	PROJECTION	Description:	PCB Mount SMA Connector Right Angle (Jack, Female, 50Ω)	
±3°				
GENERAL TOLERANCE	UNITS	mm	KLS P/N:	L-KLS1-SMA031A
x.x ±0.30	SHEET SIZE	A4		
x.xx ±0.20	Draw:	Daniel	2020-11-11	NingBo KLS ELECTRONIC CO.,L.TD.
x.xxx ±0.10	Check:	Daniel	2020-11-11	