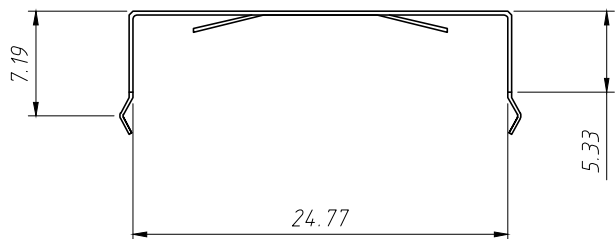
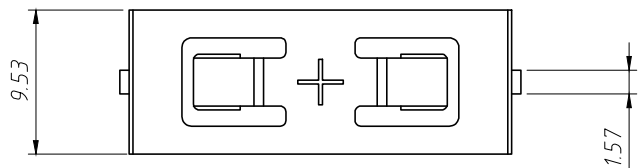
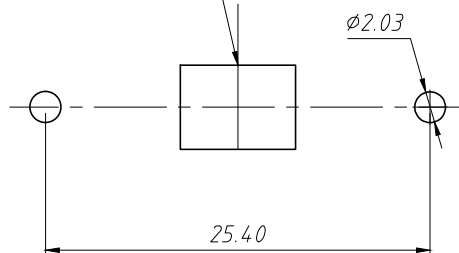


RoHS Compliance



Negative Contact Pad Nickel
Or Gold Plated Recommended.



Recommended PCB Layout
Tolerance: ±0.05mm

Description:

Material: 0.25mm Phosphor Bronze,
Nickel Plated.

Vibration Test: 10-50-10 HZ Sweepled In 60
Seconds, X.Y.Z. Direction: 1 Hour
Each Direction.

Result: No Dislodgement Of The Cell Or Damage
No Discontinuity Over 10 Micro-Seconds.

Shock Test: Half Sine Wave Acceleration 150g.
6 Ms 1 Shock Pulses Each Direction
Per Axis.

Result: No Evidence Of Physical Damage.

Drop Test: Mounted On Board And Dropped 1 Time
Per Direction From 1m High To Wooden
Floor.

Result: No Dislodgement Of The Cell, No Damage To
The Holders

ANGLE TOLERANCE	PROJECTION		Description:
±3°			CR2450 Coin Cell Retainers
GENERAL TOLERANCE	UNITS	mm	KLS P/N:
x.x ±0.30	SHEET SIZE	A4	L-KLS5-CR2450-07
x.xx ±0.20	Draw:	Daniel	2023-02-24
x.xxx ±0.10	Check:	Daniel	2023-02-24



NingBo KLS ELECTRONIC CO.,LTD.